

OICC AD 2.3 OPERATIONAL HOURS		
1	<i>AD Administration</i>	0330 - 1200
2	<i>Customs and immigration</i>	O/R
3	<i>Health and sanitation</i>	O/R
4	<i>AIS Briefing Office</i>	NIL
5	<i>ATS Reporting Office (ARO)</i>	Service available by ATS
6	<i>MET Briefing Office</i>	NIL
7	<i>ATS</i>	HJ
8	<i>Fuelling</i>	H24
9	<i>Handling</i>	O/R
10	<i>Security</i>	H24
11	<i>De-icing</i>	O/R
12	<i>Remarks</i>	NIL
OICC AD 2.8 APRONS, TAXIWAYS		
1	<i>Apron surface and strength</i>	Surface: Asphalt Strength: Information not available
2	<i>Taxiway width, surface and strength</i>	Width: All TWY 23 M Surface: Asphalt Strength: TWY C PCN 84/F/C/X/T, for other TWYs information not available
3	<i>Remarks</i>	TWY A, B, E, F, G & H closed due to construction work.
OICC AD 2.9 SURFACE MOVEMENT GUIDANCE AND CONTROL SYSTEM AND MARKINGS		
1	<i>Use of aircraft stand ID signs, TWY guide lines and parking guidance system of aircraft stands</i>	NIL
2	<i>RWY and TWY markings and LGT</i>	RWY 29R marking: Designation, THR, TDZ, aiming point, Centre line, edge & RWY end RWY 11L marking: Designation, DTHR, TDZ, aiming point, Centre line, edge & RWY end RWY 11R/29L: Designation, THR, TDZ, Centre line, edge & RWY end marked. THR, edge & RWY end lighted. TWY: Centre line, holding position at all TWY/RWY 11R/29L intersections marked. TWY Edge lighted.
3	<i>Stop bars</i>	NIL
4	<i>Remarks</i>	NIL

Tel: +98 21-66025108
 Fax: +9821-66025013
 Telex: 213889 EPDIR
 AFTN: OIIINYX
 Email: ais_iran@airport.ir
 Web Site: www.ais.airport.ir

ISLAMIC REPUBLIC OF IRAN
AERONAUTICAL INFORMATION SERVICES
 DEPUTY CEO for AERONAUTICAL OPERATIONS
 IRAN AIRPORTS & AIR NAVIGATION COMPANY (IAC)
 MEHRABAD INTL. AIRPORT
 P.O.BOX : 13185-1334, Postal Code : 1387835283
 TEHRAN – IRAN

AIP Supplement 17/23 Publication Date: 05 DEC 23

OICC AD 2.10 AERODROME OBSTACLES

<i>In approach / TKOF areas</i>			<i>In circling area and at AD</i>		<i>Remarks</i>
1			2		
<i>RWY/Area affected</i>	<i>Obstacle type Elevation/ HGT Markings/LGT</i>	<i>Coordinates</i>	<i>Obstacle type Elevation / HGT Markings/LGT</i>	<i>Coordinates</i>	
a	b	c	a	b	
11L/R APCH 29L/R TKOF	Mast 4410 FT AMSL LGTD	342130N 0470740E	RVR Antenna 4383 FT AMSL LGTD	34217.9N 0470912.3E	
11L /R APCH 29L /R TKOF	Building 4432 FT AMSL NIL	342139N 0470722E	MAST 4368 FT AMSL NIL	342031N 0471039E	
11L/R APCH 29L/R TKOF	Mobile object 4316 FT AMSL NIL	342113N 0470820E	Building 4326 FT AMSL NIL	342031N 0471036E	
11L/R APCH 29L/R TKOF	Building 4395 FT AMSL NIL	342130N 0470754E	Floodlight 4390 FT AMSL NIL	342116N 0470850E	
11R APCH 29L TKOF	Tower Crane 4492 FT AMSL LGTD	342132N 0470649E	TWR Building 4422 FT AMSL LGTD	342057N 0470926E	
11L/R APCH 29L/R TKOF	Building 4376 FT AMSL NIL	342132N 0470757E	NDB antenna 4392 FT AMSL LGTD	342121.4N 0470833.7E	
11L/R APCH 29L/R TKOF	Building 4377 FT AMSL NIL	342129N 0470742E			

Tel: +98 21-66025108
 Fax: +9821-66025013
 Telex: 213889 EPDIR
 AFTN: OIIINYX
 Email: ais_iran@airport.ir
 Web Site: www.ais.airport.ir

ISLAMIC REPUBLIC OF IRAN
AERONAUTICAL INFORMATION SERVICES
 DEPUTY CEO for AERONAUTICAL OPERATIONS
 IRAN AIRPORTS & AIR NAVIGATION COMPANY (IAC)
 MEHRABAD INTL. AIRPORT
 P.O.BOX : 13185-1334, Postal Code : 1387835283
 TEHRAN – IRAN

AIP Supplement
 17/23
 Publication Date:
 05 DEC 23

OICC AD 2.12 RUNWAY PHYSICAL CHARACTERISTICS

<i>Designations RWYNR</i>	<i>TRUE BRG</i>	<i>Dimensions of RWY (M)</i>	<i>Strength (PCN) and surface of RWY and SWY</i>	<i>THR coordinates THR geoid undulation</i>	<i>THR elevation and highest elevation of TDZ of precision APP RWY</i>
1	2	3	4	5	6
11L	115.98°GEO	2943 x 45	70/F/C/X/T Asphalt	342109.71N 0470844.86E GUND +22 FT	4306 FT
29R	296.00°GEO	2943 x 45	70/F/C/X/T Asphalt	342027.86N 0471028.37E GUND +22 FT	4305 FT
11R	116.09°GEO	3220 x 45	36/F/C/X/T Asphalt	342106.63N 0470836.17E GUND +26 FT	4299 FT
29L	296.09°GEO	3220 x 45	36/F/C/X/T Asphalt	342020.75N 0471029.39E GUND +26 FT	4301 FT
<i>Slope of RWY - SWY</i>	<i>SWY dimensions (M)</i>	<i>CWY dimensions (M)</i>	<i>Strip dimensions (M)</i>	<i>RESA</i>	<i>OFZ</i>
7	8	9	10	11	12
0.02%	NIL	NIL	3663 x 150	60 x 240	NIL
0.02%	NIL	NIL	3663 x 150	60 x 240	NIL
0.02%	135 x 45	135 x 150	NIL	NIL	NIL
0.02%	NIL	NIL	NIL	NIL	NIL
<i>Remarks</i>					
13					
THR RWY 11R displaced 720 M. DTHR COORDINATES: 342056.32N 0470901.34E DTHR elevation:4300 FT THR RWY 11L displaced 228 M. DTHR COORDINATES: 342106.47N 0470852.87E DTHR elevation:4307 FT Provision of using RWY 11L/29R as contingency RWY: - Non-Instrument RWY. - Only available when RWY 11R/29L is closed. - Day operation only. - No aircraft shall be parked in south stands during the activity of the contingency RWY 11L/29R. - Aerodrome Reference Code is 4C only when RWY 29R is used for landing and RWY 11L is used for take-off, otherwise Aerodrome Reference Code is 3C. - Circling Approach for arrivals. - Visual Departure that mandates the specified altitude/ point to join SID for departures. - Minimum visibility at least 5 KM according to METAR. - No clouds below 1500 FT and no ceiling below 2200 FT - Maximum tailwind component is 10 Knots. - Maximum crosswind component is 15 Knots. - The Minimum Runway Condition Code is 4.					

Tel: +98 21-66025108
 Fax: +9821-66025013
 Telex: 213889 EPDIR
 AFTN: OIIINYX
 Email: ais_iran@airport.ir
 Web Site: www.ais.airport.ir

ISLAMIC REPUBLIC OF IRAN
AERONAUTICAL INFORMATION SERVICES
 DEPUTY CEO for AERONAUTICAL OPERATIONS
 IRAN AIRPORTS & AIR NAVIGATION COMPANY (IAC)
 MEHRABAD INTL. AIRPORT
 P.O.BOX : 13185-1334, Postal Code : 1387835283
 TEHRAN – IRAN

AIP Supplement 17/23 Publication Date: 05 DEC 23

OICC AD 2.13 DECLARED DISTANCES

<i>RWY Designator</i>	<i>TORA (M)</i>	<i>TODA (M)</i>	<i>ASDA (M)</i>	<i>LDA (M)</i>	<i>Remarks</i>
11L	2943	2943	2943	2715	NIL
29R	2943	2943	2943	2943	NIL
11R	2500	2635	2635	2500	NIL
29L	2500	2500	2500	2500	NIL

OICC AD 2.14 APPROACH AND RUNWAY LIGHTING

<i>RWY Designator</i>	<i>APCH LGT type LEN INTST</i>	<i>THR LGT colour WBAR</i>	<i>VASIS (MEHT) PAPI</i>	<i>TDZ LGT LEN</i>	<i>RWY Centre Line LGT LEN, spacing, colour INTST</i>	<i>RWY edge LGT LEN, spacing colour, INTST</i>	<i>RWY End LGT colour WBAR</i>	<i>SWY LGT LEN colour</i>	<i>Remarks</i>
<i>1</i>	<i>2</i>	<i>3</i>	<i>4</i>	<i>5</i>	<i>6</i>	<i>7</i>	<i>8</i>	<i>9</i>	<i>10</i>
11L	NIL	NIL	NIL	NIL	NIL	NIL	NIL	NIL	NIL
29R	NIL	NIL	NIL	NIL	NIL	NIL	NIL	NIL	NIL
11R	NIL	Green Supplemented by WBAR	NIL	NIL	NIL	3220 M 60 M White, LIH	Red Supplemented by WBAR	NIL	NIL
29L	PALS (CAT I) 813M LIH	Green Supplemented by WBAR	PAPI Left/ 3° (61 FT)	NIL	NIL	3220 M 60 M White, LIH	RED	NIL	NIL

OICC AD 2.18 ATS COMMUNICATION FACILITIES

<i>Service designation</i>	<i>Call sign</i>	<i>Frequency</i>	<i>Hours of operation</i>	<i>Remarks</i>
<i>1</i>	<i>2</i>	<i>3</i>	<i>4</i>	<i>5</i>
TWR	Kermanshah Tower	122.450 MHZ 121.900 MHZ 121.500 MHZ	HJ HJ HJ	Emergency
ATIS (INFO)	Kermanshah information	126.800 MHZ	HJ	

Note: Tower frequency range is only 35NM.

Tel: +98 21-66025108
 Fax: +9821-66025013
 Telex: 213889 EPDIR
 AFTN: OIIINYX
 Email: ais_iran@airport.ir
 Web Site: www.ais.airport.ir

ISLAMIC REPUBLIC OF IRAN
AERONAUTICAL INFORMATION SERVICES
 DEPUTY CEO for AERONAUTICAL OPERATIONS
 IRAN AIRPORTS & AIR NAVIGATION COMPANY (IAC)
 MEHRABAD INTL. AIRPORT
 P.O.BOX : 13185-1334, Postal Code : 1387835283
 TEHRAN – IRAN

AIP Supplement 17/23 Publication Date: 05 DEC 23

OICC AD 2.19 RADIO NAVIGATION AND LANDING AIDS

<i>Type of aid, CAT of ILS (For VOR/ILS, give VAR)</i>	<i>ID</i>	<i>Frequency</i>	<i>Hours of operation</i>	<i>Site of transmitting antenna coordinates</i>	<i>Elevation of DME transmitting antenna</i>	<i>Remarks</i>
1	2	3	4	5	6	7
NDB	KMS	382 KHZ	H24	342121.4N 0470833.7E	4392 FT	
DVOR/DME (3°.30' E / 1997)	KMS	114.600 MHZ CH 93X	H24	342023.0N 0471008.9E	4308 FT	
TACAN	KSH	CH 102X	H24	341840.0N 0470140.0E		

DVOR unusable in the FLW area counter clockwise direction:

- | | |
|---|---|
| 1- 320° - 310° beyond 20 NM, BLW 10000 FT AMSL. | 2- 310° - 230° beyond 25 NM, BLW 9000 FT AMSL. |
| 3- 230° - 210° beyond 20 NM, BLW 10000 FT AMSL. | 4- 210° - 180° beyond 25 NM, BLW 12000 FT AMSL. |
| 5- 180° - 110° beyond 30 NM, BLW 11000 FT AMSL. | 6- 110° - 070° beyond 20 NM, BLW 10000 FT AMSL. |

Note: ILS (GP, LOC, DME) RWY29 IKMS 111.100 MHZ CH 48x completely withdrawn.

OICC AD 2.20 LOCAL TRAFFIC REGULATIONS

- VFR traffics should remain on left-hand pattern RWY 29R.

OICC AD 2.24 CHARTS RELATED TO AN AERODROME

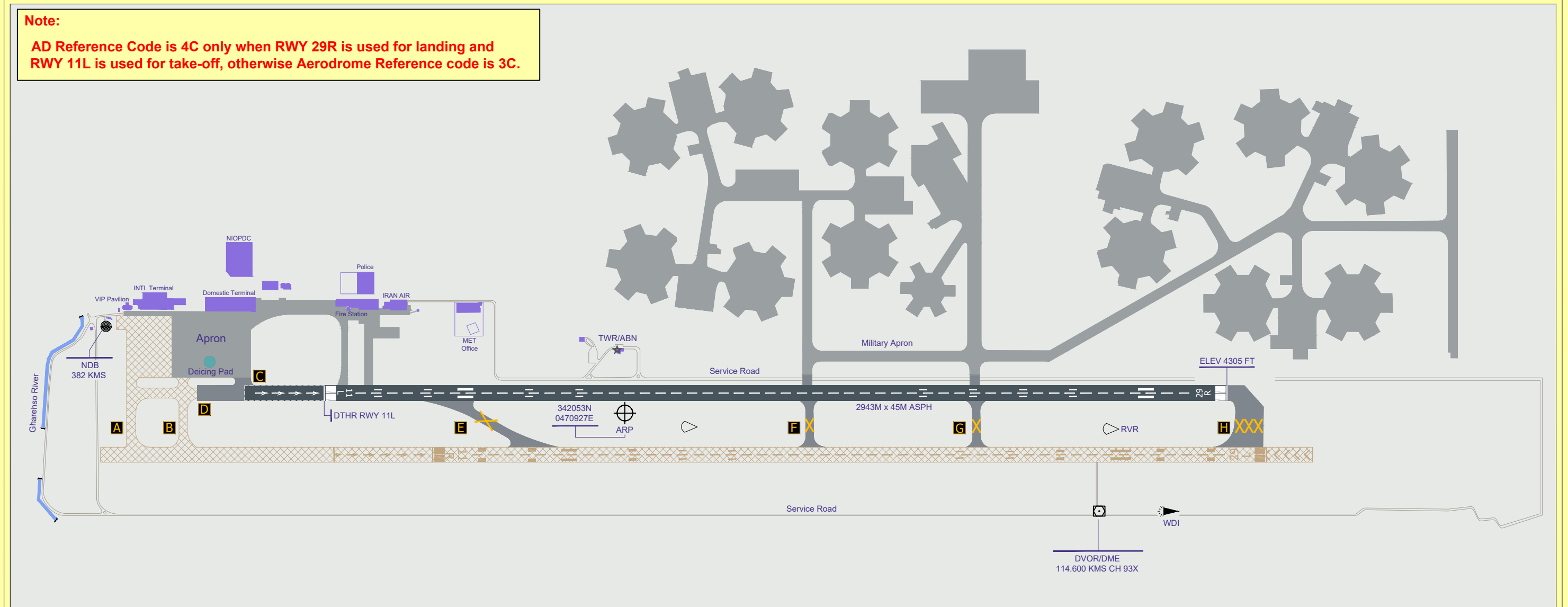
Aerodrome Chart – ICAO	AD 2 OICC ADC
Standard Departure Chart - Instrument – ICAO.....	AD 2 OICC SID 1-1
.....	AD 2 OICC SID 1-2
.....	AD 2 OICC SID 2-1
.....	AD 2 OICC SID 2-2
Standard Arrival Chart - Instrument – ICAO	AD 2 OICC STAR 1-1
.....	AD 2 OICC STAR 1-2
.....	AD 2 OICC STAR 2-1
.....	AD 2 OICC STAR 2-2
Instrument Approach Chart – ICAO	AD 2 OICC IAC 2-1
.....	AD 2 OICC IAC 2-2
.....	AD 2 OICC IAC 4-1
.....	AD 2 OICC IAC 4-2
.....	AD 2 OICC IAC 4-3
.....	AD 2 OICC IAC 4-4

AERODROME CHART - ICAO

KERMANSHAH / SHAHID ASHRAFI ESFAHANI

AD Elevation : 4307 FT		Aerodrome Lighting		COM			Hotspot	Isolated ACFT Parking Position	Under Construction	Building		
Scale 1:12000		RWY Lighting		TWR	GND	ATIS	Runway	Taxiway	Apron	Deicing Pad		
		11L/29R	11R/29L	121.900	-	126.800						
Hotspot : NIL		INFO not AVBL	NIL	RWY	Direction	Elevation	THR	GUND	Bearing Strength	Displaced Threshold		
				11L	115.98°	4306 FT	361451.71N 0470844.86E	22 FT	70/F/C/X/T Asphalt	THR RWY 11L: Displaced: 228 M Coordinates: 342106.47N 0470852.87E Elevation: 4307 FT		
				29R	296.00°	4305 FT	342027.86N 0471028.37E	22 FT	70/F/C/X/T Asphalt			
				11R	116.09°	4299 FT	342106.63N 0470836.17E	26 FT	36/F/C/X/T Asphalt			
				29L	296.09°	4301 FT	342020.75N 0471029.39E	26 FT	36/F/C/X/T Asphalt			
		Others Lighting		TWY							Displaced Threshold	
		ABN : FLG Withe, Green TWY Edge : INFO not AVBL Apron : INFO not AVBL		Width : All TWY 23 M Surface : Asphalt Strength : TWY C PCN 84/F/C/X/T, for other TWYs INFO not AVBL. TWY A, B, F, E, G & H Closed due to Construction Work.								
				Apron		Surface : Asphalt Strength : INFO not AVBL						
				VOR check point		NIL						

Note:
AD Reference Code is 4C only when RWY 29R is used for landing and RWY 11L is used for take-off, otherwise Aerodrome Reference code is 3C.



ISLAMIC REPUBLIC OF IRAN

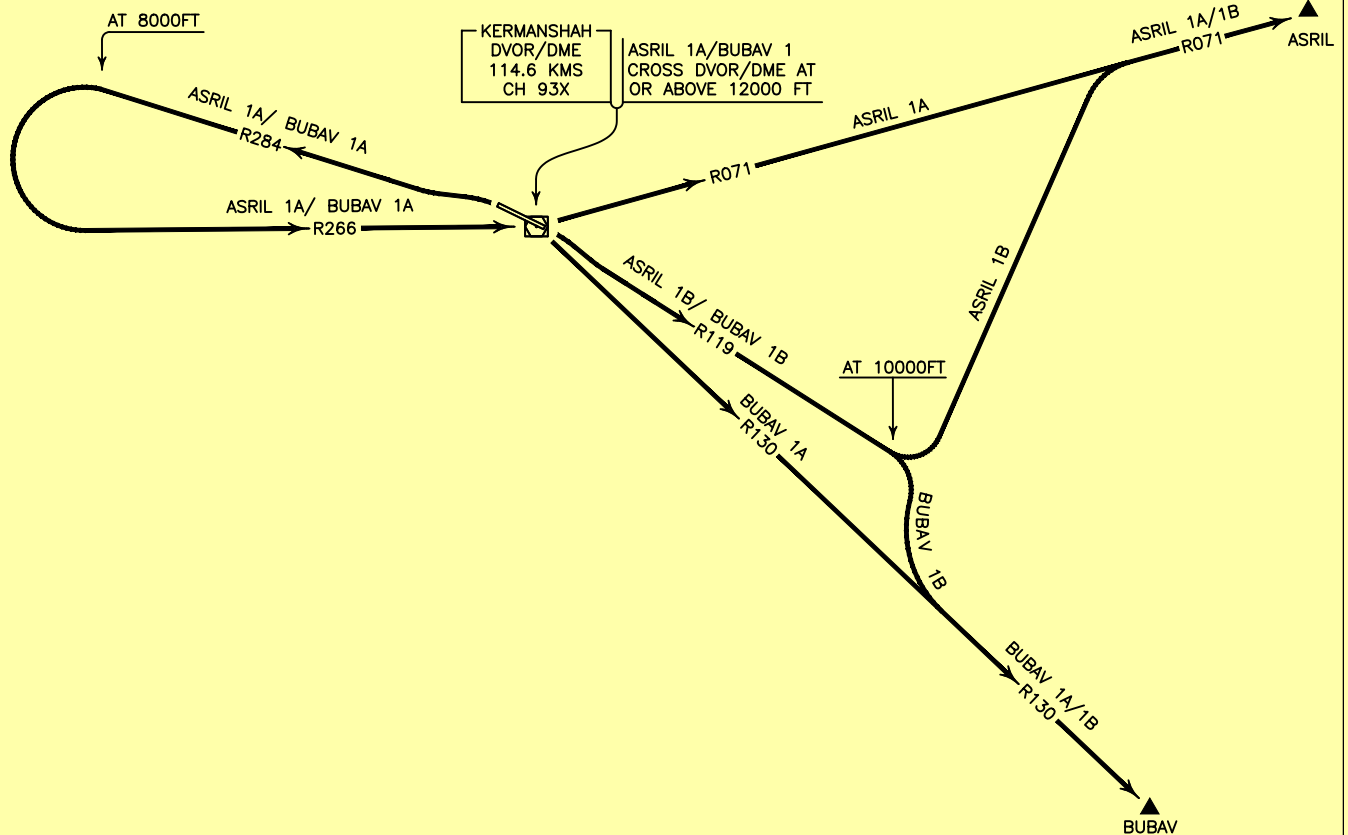
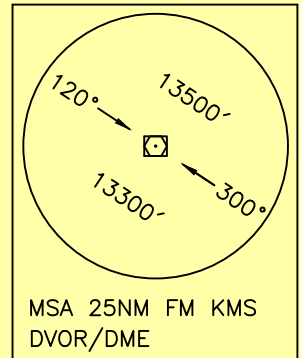
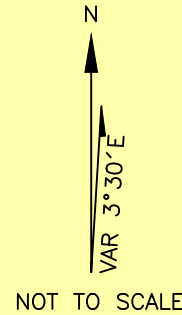
STANDARD DEPARTURE CHART-
INSTRUMENT (SID)-ICAO

TRANSITION ALTITUDE 13000 FT	TWR 122.450
	121.900
	ATIS 126.800

KERMANSHAH/ SHAHID ASHRAFI ESFAHANI
RWY 29L/11R
ASRIL 1A/1B
BUBAV 1A/1B

ALL DIRECTIONS ARE MAGNETIC.
LEVEL AND ELEVATIONS ARE IN FEET.
DISTANCES ARE IN NAUTICAL MILES.

CTR and ATZ class "D".



ASRIL 1A DEP:

DEP RWY 29L - After take off turn left climb on RDL 284 to ALT 8000 FT, then turn left to intercept RDL 266 to cross overhead DVOR/DME at or above 12000 FT, then continue on RDL 071 to ASRIL and climb to cleared level.

ASRIL 1B DEP:

DEP RWY 11R - After take off turn right climb on RDL 119 to ALT 10000 FT, then turn left to intercept RDL 071 to ASRIL and climb to cleared level.

BUBAV 1A DEP:

DEP RWY 29L - After take off turn left climb on RDL 284 to ALT 8000 FT, then turn left to intercept RDL 266 to cross overhead at or above 12000 FT, then turn right to intercept RDL 130 to BUBAV and climb to cleared level.

BUBAV 1B DEP:

DEP RWY 11R - After take off turn right climb on RDL 119 to ALT 10000 FT, then turn right to intercept RDL 130 to BUBAV and climb to cleared level. MNM rate of climb 380 FT/NM.

ISLAMIC REPUBLIC OF IRAN

STANDARD DEPARTURE CHART-
INSTRUMENT (SID)-ICAO

TRANSITION ALTITUDE 13000 FT	TWR 122.450
	121.900
	ATIS 126.800

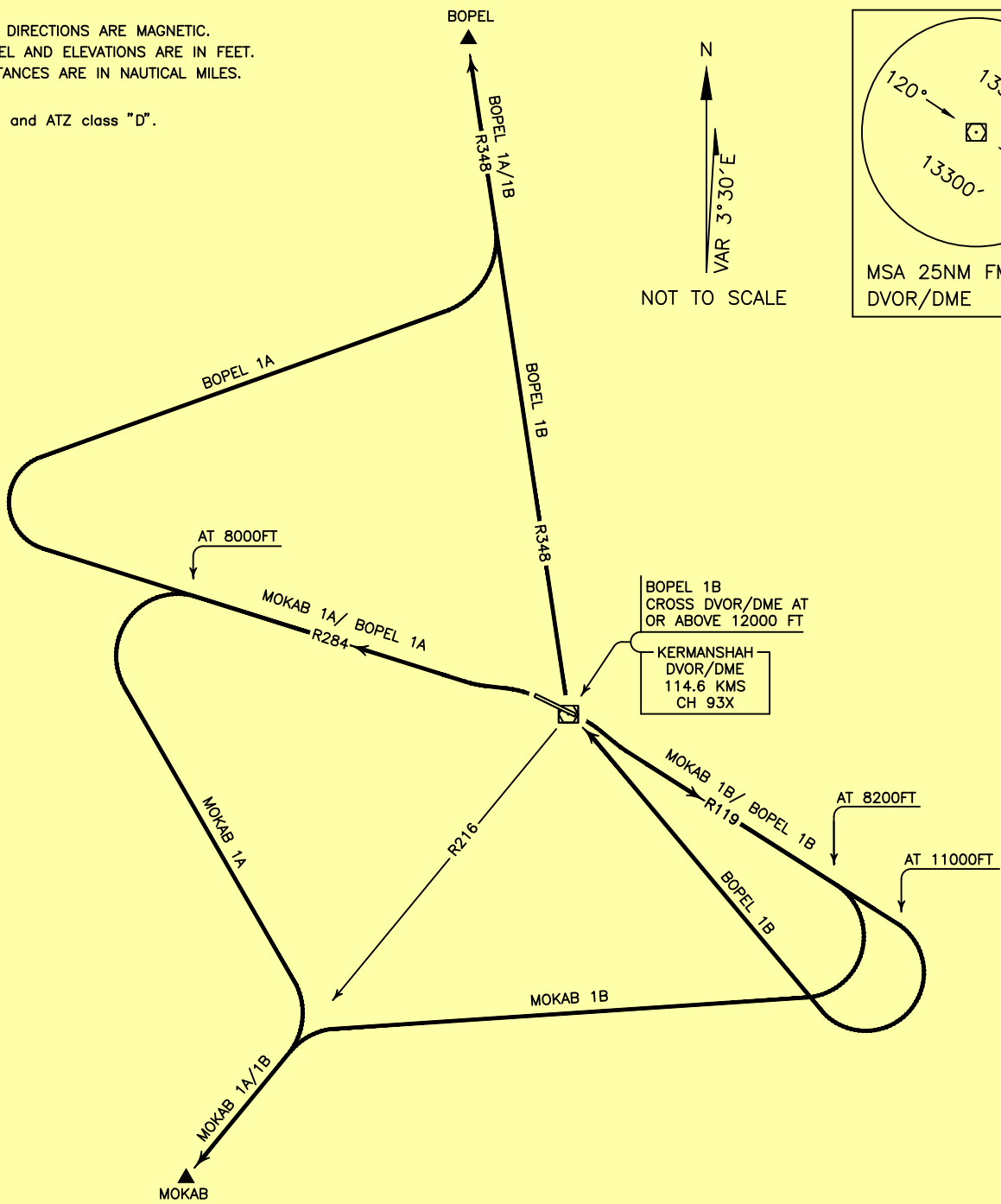
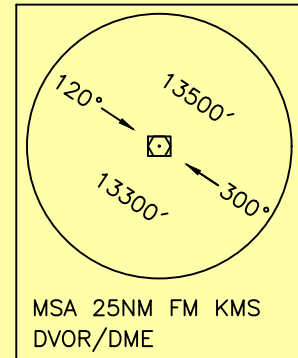
KERMANSHAH/ SHAHID ASHRAFI ESFAHANI
RWY 29L/11R
MOKAB 1A/1B
BOPEL 1A/1B

ALL DIRECTIONS ARE MAGNETIC.
LEVEL AND ELEVATIONS ARE IN FEET.
DISTANCES ARE IN NAUTICAL MILES.

CTR and ATZ class "D".



NOT TO SCALE



MOKAB 1A DEP:

DEP RWY 29L - After take off turn left climb on RDL 284 to ALT 8000 FT, then turn left to intercept RDL 216 to MOKAB and climb to cleared level. MNM rate of climb 250 FT/NM.

MOKAB 1B DEP:

DEP RWY 11R - After take off turn right climb on RDL 119 to ALT 8200 FT, then turn right to intercept RDL 216 to MOKAB and climb to cleared level. MNM rate of climb 305 FT/NM up to 8200 FT.

BOPEL 1A DEP:

DEP RWY 29L - After take off turn left climb on RDL 284 to ALT 10000 FT, then turn right to intercept RDL 348 to BOPEL and climb to cleared level. MNM rate of climb 250 FT/NM.

BOPEL 1B DEP:

DEP RWY 11R - After take off turn right climb on RDL 119 to ALT 11000 FT, then turn right to cross overhead at or above ALT 12000 FT, then intercept RDL 348 to BOPEL and climb to cleared level. MNM rate of climb 350 FT/NM up to ALT 11000 FT.

ISLAMIC REPUBLIC OF IRAN

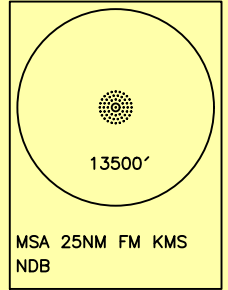
STANDARD DEPARTURE CHART-
INSTRUMENT (SID)-ICAO

TRANSITION ALTITUDE 13000 FT	TWR 122.450 121.900 ATIS 126.800
---------------------------------	--

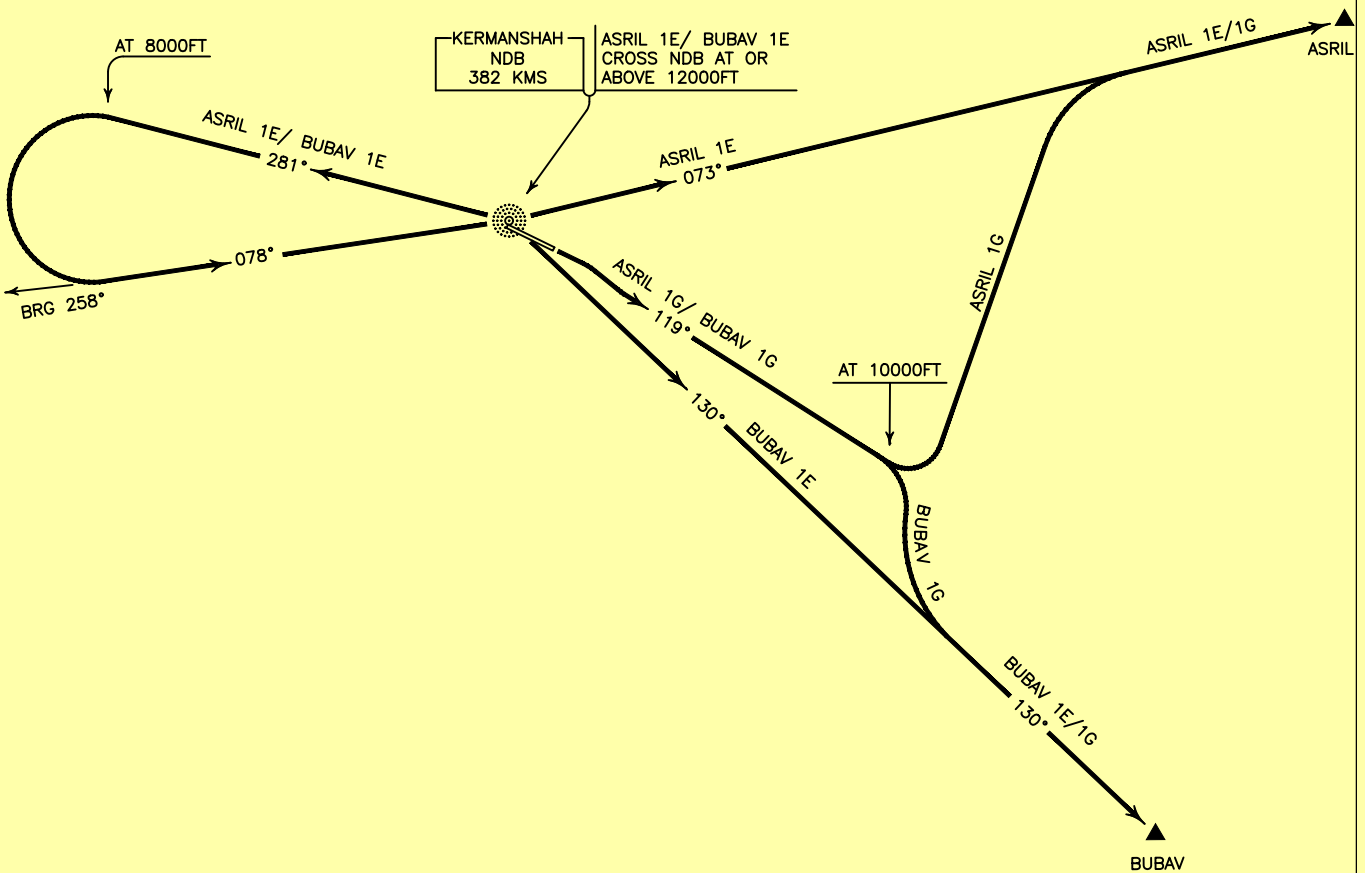
KERMANSHAH/ SHAHID ASHRAFI ESFAHANI
RWY 11R/29L
ASRIL 1E/1G
BUBAV 1E/1G

ALL DIRECTIONS ARE MAGNETIC.
LEVEL AND ELEVATIONS ARE IN FEET.
DISTANCES ARE IN NAUTICAL MILES.

CTR and ATZ class "D".



NOT TO SCALE



ASRIL 1E DEP:

DEP RWY 29L - After take off turn left climb on MAG TR 281° (BRG 281°) to ALT 8000 FT, then turn left to intercept MAG TR 078° (BRG 258°) to cross overhead KMS NDB at or above 12000 FT, then climb on MAG TR 073° (BRG 073°) to ASRIL and climb to cleared level.

ASRIL 1G DEP:

DEP RWY 11R - After take off turn right climb on MAG TR 119° (BRG 119°) to ALT 10000 FT, then turn left to intercept MAG TR 073° (BRG 073°) to ASRIL and climb to cleared level. MNM rate of climb 300 FT/NM.

BUBAV 1E DEP:

DEP RWY 29L - After take off turn left climb on MAG TR 281° (BRG 281°) to ALT 8000 FT, then turn left to intercept MAG TR 078° (BRG 258°) to cross overhead at or above 12000 FT, then turn right to intercept MAG TR 130° (BRG 130°) to BUBAV and climb to cleared level.

BUBAV 1G DEP:

DEP RWY 11R - After take off turn right climb on MAG TR 119° (BRG 119°) to ALT 10000 FT, then turn right to intercept MAG TR 130° (BRG 130°) to BUBAV and climb to cleared level. MNM rate of climb 380 FT/NM.

ISLAMIC REPUBLIC OF IRAN

STANDARD ARRIVAL CHART-
INSTRUMENT (STAR)-ICAO

TRANSITION ALTITUDE
13000 FT

TWR 122.450
121.900
ATIS 126.800

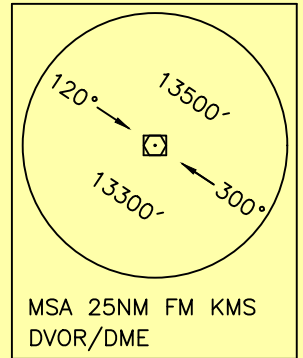
KERMANSHAH/ SHAHID ASHRAFI ESFAHANI
RWY 29R/L 11R/L
ASRIL 1Y/1Z
BUBAV 1Y/1Z



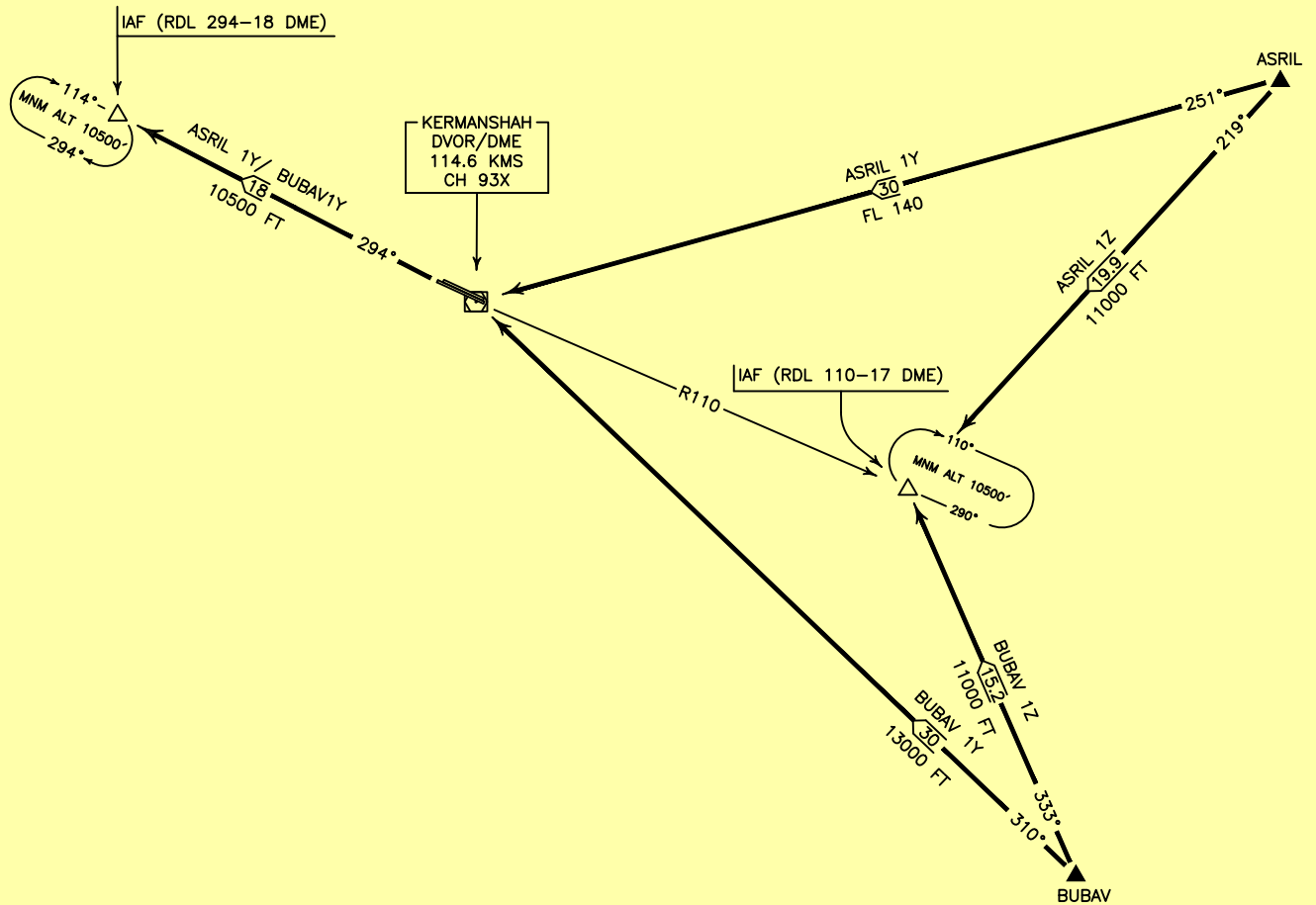
NOT TO SCALE

ALL DIRECTIONS ARE MAGNETIC.
LEVEL AND ELEVATIONS ARE IN FEET.
DISTANCES ARE IN NAUTICAL MILES.

CTR and ATZ class "D".



ACTUAL DESCENT CLEARANCE
WILL BE AS DIRECTED BY ATC.



ASRIL 1Y ARR:

FM ASRIL proceed to IAF (RDL 294 - 18 DME) via overhead KMS DVOR/DME, MAG TR 251, DIST 30 NM, MNM FL 140, then MAG TR 294° to IAF, DIST 18 NM, MNM ALT 10500 FT.

ASRIL 1Z ARR:

FM ASRIL proceed to IAF (RDL 110-17 DME), MAG TR 219°, DIST 19.9 NM, MNM ALT 11000 FT.

BUBAV 1Y ARR:

FM BUBAV proceed to IAF (RDL 294-18 DME) via overhead KMS DVOR/DME, MAG TR 310°, DIST 30 NM, MNM ALT 13000 FT, then MAG TR 294° to IAF, DIST 18 NM, MNM ALT 10500 FT.

BUBAV 1Z ARR:

FM BUBAV proceed to IAF (RDL 110-17 DME), MAG TR 333°, DIST 15.2 NM, MNM ALT 11000 FT.

ISLAMIC REPUBLIC OF IRAN

STANDARD ARRIVAL CHART-
INSTRUMENT (STAR)-ICAO

TRANSITION ALTITUDE
13000 FT

TWR 122.450
121.900
ATIS 126.800

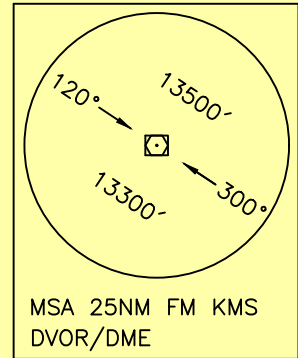
KERMANSHAH/ SHAHID ASHRAFI ESFAHANI
RWY 29R/L 11R/L
BOPEL 1Y/1Z
MOKAB 1Y/1Z

ALL DIRECTIONS ARE MAGNETIC,
LEVEL AND ELEVATIONS ARE IN FEET,
DISTANCES ARE IN NAUTICAL MILES.

CTR and ATZ class "D".

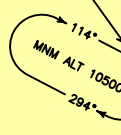


NOT TO SCALE



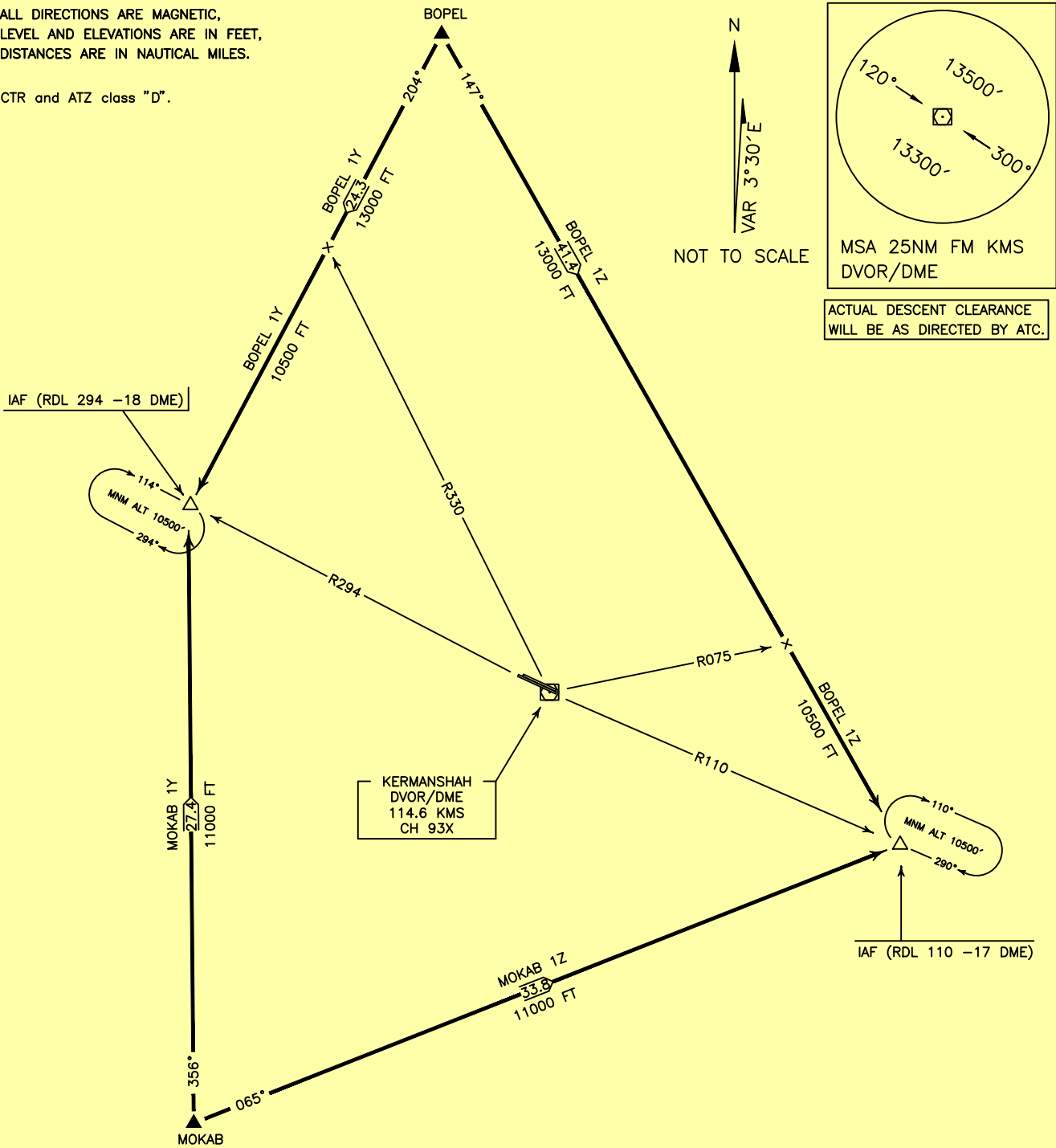
ACTUAL DESCENT CLEARANCE
WILL BE AS DIRECTED BY ATC.

IAF (RDL 294 -18 DME)



KERMANSHAH
DVOR/DME
114.6 KMS
CH 93X

IAF (RDL 110 -17 DME)



MOKAB 1Y ARR:

FM MOKAB proceed to IAF (RDL 294 -18 DME), MAG TR 356°, DIST 27.4 NM MNM ALT 11000 FT.

MOKAB 1Z ARR:

FM MOKAB proceed to IAF (RDL 110 -17 DME), MAG TR 065°, DIST 33.8 NM, MNM ALT 11000 FT.

BOPEL 1Y ARR:

FM BOPEL proceed to IAF (RDL 294 -18 DME), MAG TR 204°, DIST 24.3 NM, MNM ALT 13000 FT, after crossing RDL 330, MNM ALT 10500 FT.

BOPEL 1Z ARR:

FM BOPEL proceed to IAF (RDL 110 -17 DME), MAG TR 147°, DIST 41.4 NM, MNM ALT 13000 FT, after crossing RDL 075, MNM ALT 10500 FT.

ISLAMIC REPUBLIC OF IRAN

STANDARD ARRIVAL CHART-
INSTRUMENT (STAR)-ICAO

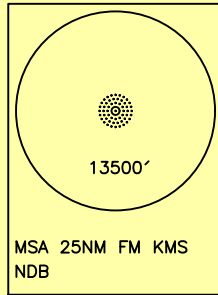
TRANSITION ALTITUDE
13000 FT

TWR 122.450
121.900
ATIS 126.800

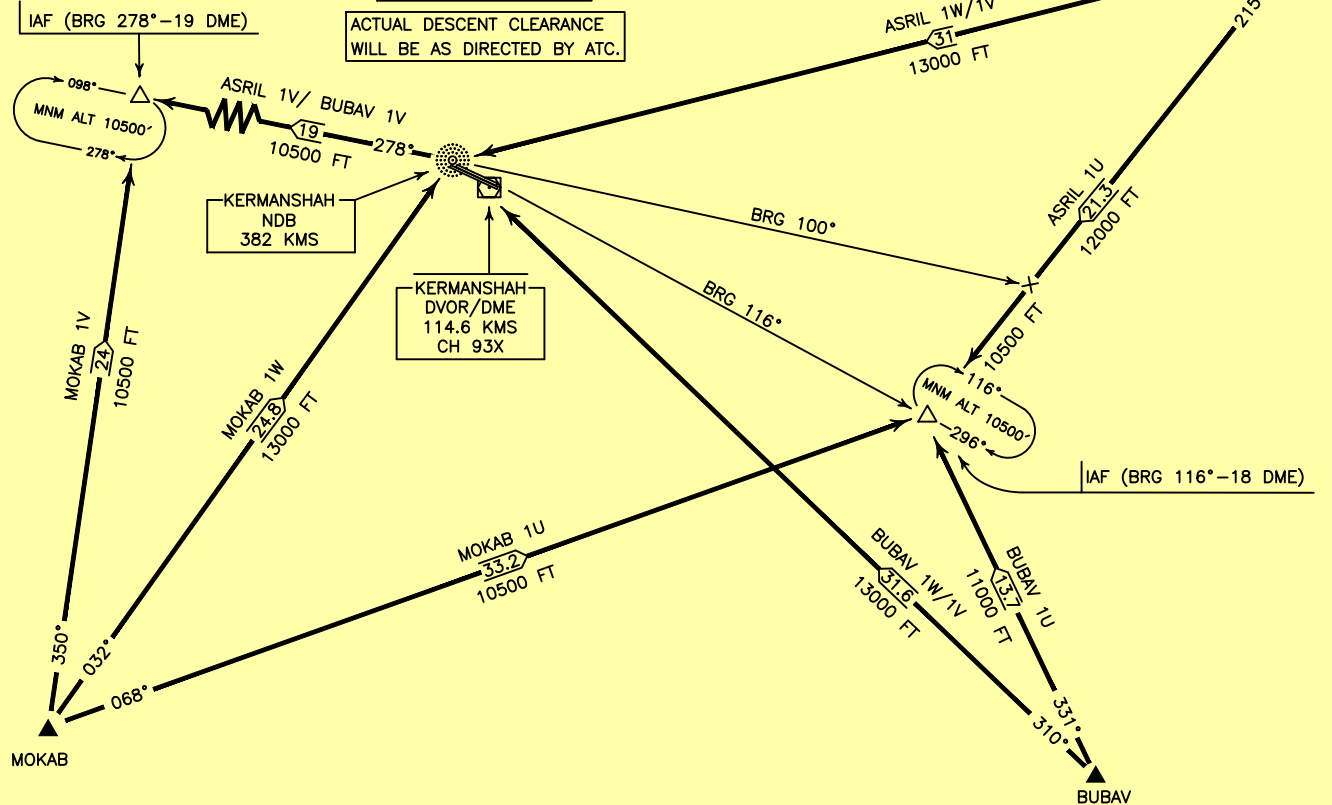
KERMANSHAH/ SHAHID ASHRAFI ESFAHANI
RWY 29R/L 11R/L
ASRIL 1U/1V/1W
BUBAV 1U/1V/1W
MOKAB 1U/1V/1W

ALL DIRECTIONS ARE MAGNETIC.
LEVEL AND ELEVATIONS ARE IN FEET.
DISTANCES ARE IN NAUTICAL MILES.

CTR and ATZ class "D".



NOT TO SCALE



ASRIL 1U ARR:

FM ASRIL proceed to IAF (BRG 116°-18 DME), MAG TR 215°, DIST 21.3 NM, MNM ALT 12000 FT, after crossing BRG 100°, MNM level 10500 FT.

ASRIL 1V ARR:

FM ASRIL proceed to IAF (BRG 278°-19 DME) via overhead KMS NDB, MAG TR 253°, DIST 31 NM, MNM ALT 13000 FT, then MAG TR 278°, DIST 19 NM, MNM ALT 10500 FT.

ASRIL 1W ARR:

FM ASRIL proceed to overhead KMS NDB, MAG TR 253°, DIST 31 NM, MNM ALT 13000 FT.

BUBAV 1U ARR:

FM BUBAV proceed to IAF (BRG 116°-18 DME), MAG TR 331°, DIST 13.7 NM, MNM ALT 11000 FT.

BUBAV 1V ARR:

FM BUBAV proceed to IAF (BRG 278°-19 DME) via overhead KMS NDB, MAG TR 310°, DIST 31.6 NM, MNM ALT 13000 FT, then MAG TR 278° to IAF, DIST 19 NM, MNM ALT 10500 FT.

BUBAV 1W ARR:

FM BUBAV proceed to overhead KMS NDB, MAG TR 310°, DIST 31.6 NM, MNM ALT 13000 FT.

MOKAB 1U ARR:

FM MOKAB proceed to IAF (BRG 116°-18 DME), MAG TR 068°, DIST 33.2 NM, MNM ALT 10500 FT.

MOKAB 1V ARR:

FM MOKAB proceed to IAF (BRG 278°-19 DME), MAG TR 350°, DIST 24 NM, MNM ALT 10500 FT.

MOKAB 1W ARR:

FM MOKAB proceed to overhead KMS NDB, MAG TR 032°, DIST 24.8 NM, MNM ALT 13000 FT.

ISLAMIC REPUBLIC OF IRAN

STANDARD ARRIVAL CHART—
INSTRUMENT (STAR)—ICAO

TRANSITION ALTITUDE
13000 FT

TWR 122.450
121.900
ATIS 126.800

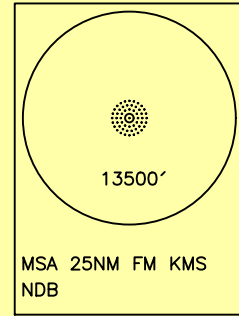
KERMANSHAH/ SHAHID ASHRAFI ESFAHANI

RWY 29R/L 11R/L

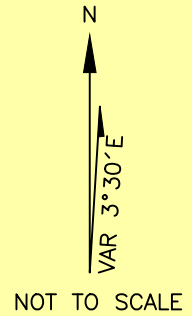
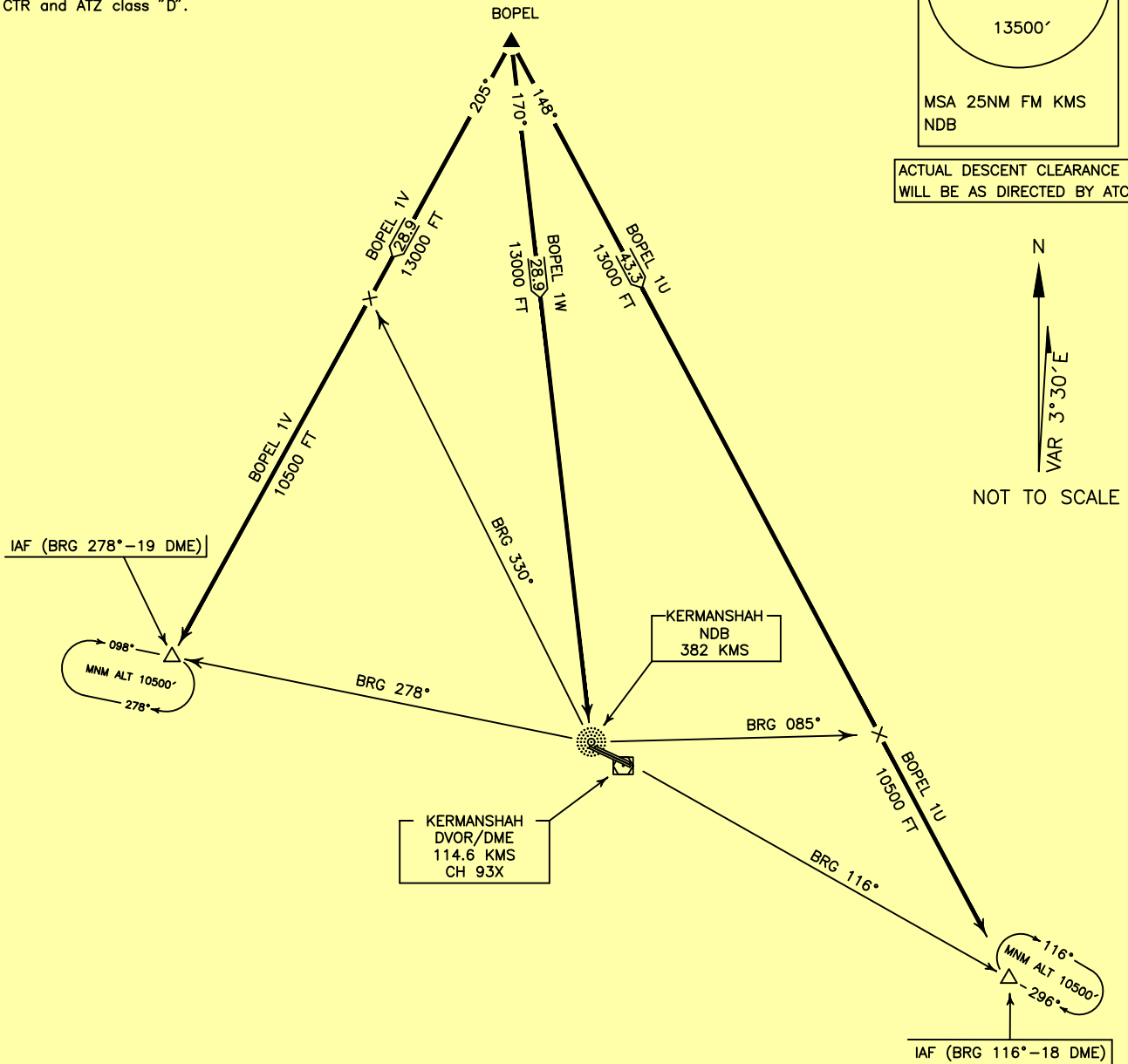
BOPEL 1U/1V/1W

ALL DIRECTIONS ARE MAGNETIC.
LEVEL AND ELEVATIONS ARE IN FEET.
DISTANCES ARE IN NAUTICAL MILES.

CTR and ATZ class "D".



ACTUAL DESCENT CLEARANCE
WILL BE AS DIRECTED BY ATC.



BOPEL 1U ARR:

FM BOPEL proceed to IAF (BRG 116°-18 DME), MAG TR 148°, DIST 43.3 NM, MNM ALT 13000 FT, after crossing BRG 085°, MNM ALT 10500 FT.

BOPEL 1V ARR:

FM BOPEL proceed to IAF (BRG 278°-19 DME), MAG TR 205°, DIST 28.9 NM, MNM ALT 13000 FT, after crossing BRG 330°, MNM ALT 10500 FT.

BOPEL 1W ARR:

FM BOPEL proceed to overhead KMS NDB, MAG TR 170°, DIST 28.9 NM, MNM ALT 13000 FT.

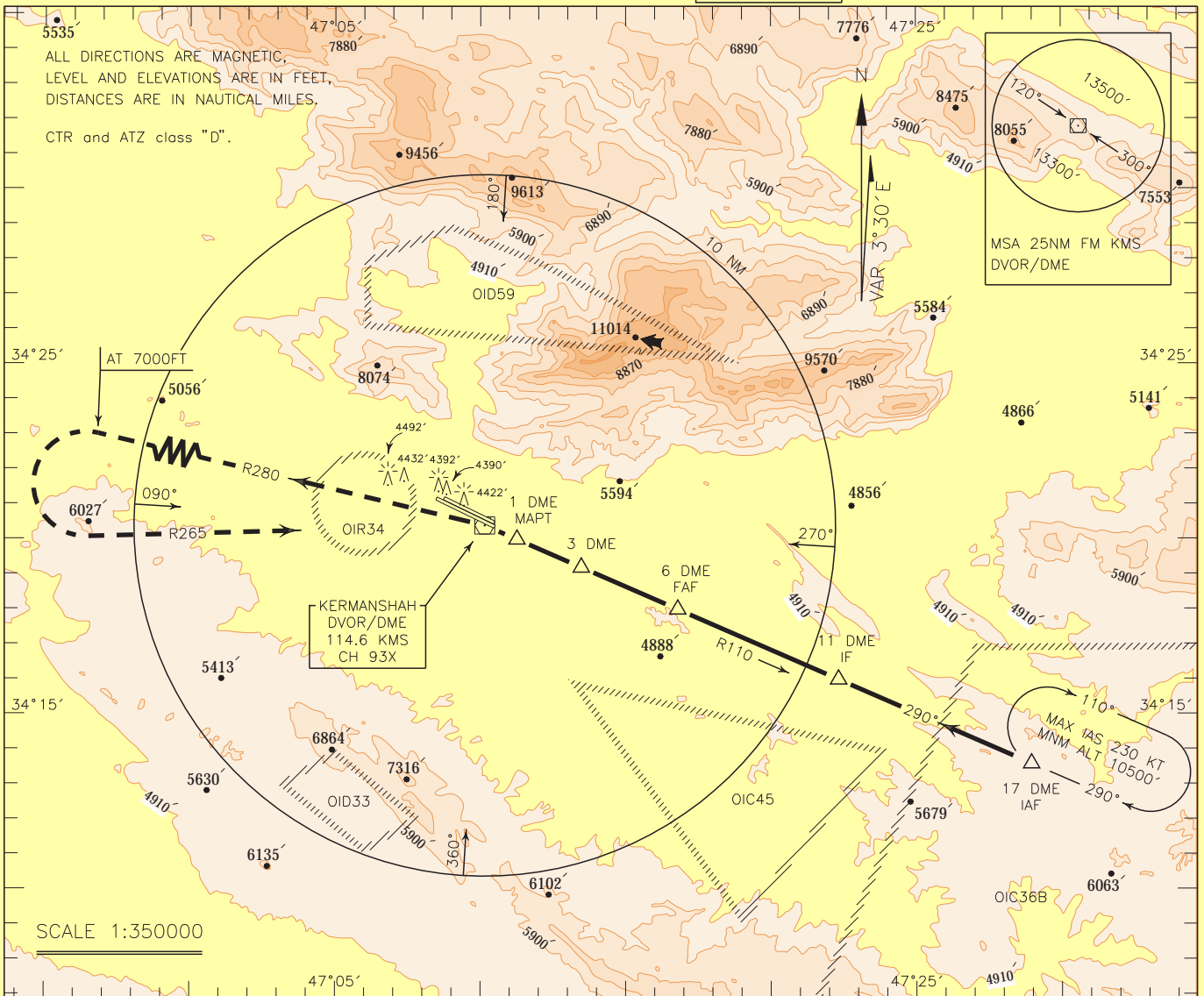
INSTRUMENT
APPROACH
CHART-ICAO

AERODROME ELEV. 4307 FT
HEIGHTS RELATED TO
AERODROME ELEVATION

KERMANSHAH/ SHAHID ASHRAFI ESFAHANI

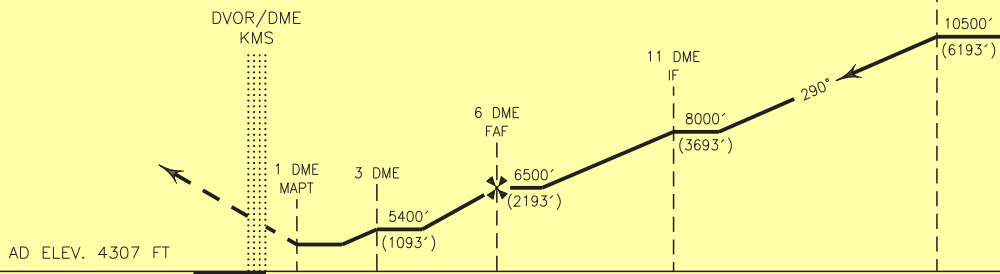
TWR 122.450
121.900
ATIS 126.800

VOR A
CAT A/B/C



MISSED APPROACH: At 1 DME From KMS DVOR/DME climb straight ahead to DVOR/DME, then climb on RDL 280 to 7000 FT, then turn left (MAX IAS 185 KT) climb on RDL 265 to DVOR/DME, establish RDL 110 to rejoin HLDG at 10500 FT.

TA 13000'



5 4 3 2 1 0 5 10 15 NM FM THR RWY 29L

NOTE:

- 1-Circling not authorized to the north of AD.
- 2-Contour intervals are to be selected at 990 FT (300 M).

OCA(H)	A	B	C	D
Straight				
Circling	5100'(793')	5200'(893')	5400'(1093')	

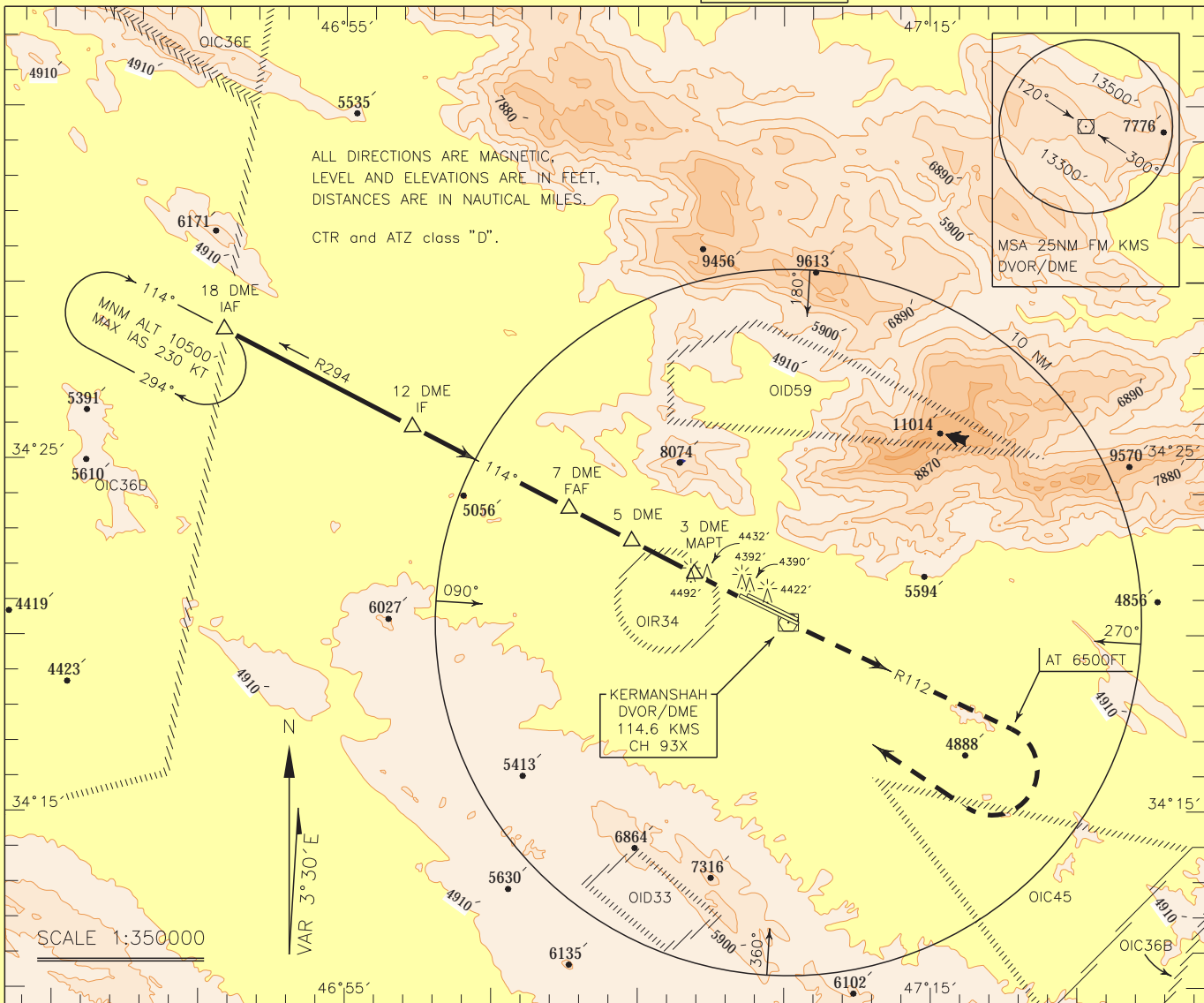
INSTRUMENT
APPROACH
CHART-ICAO

AERODROME ELEV. 4307 FT
HEIGHTS RELATED TO
AERODROME ELEVATION

KERMANSHAH/ SHAHID ASHRAFI ESFAHANI

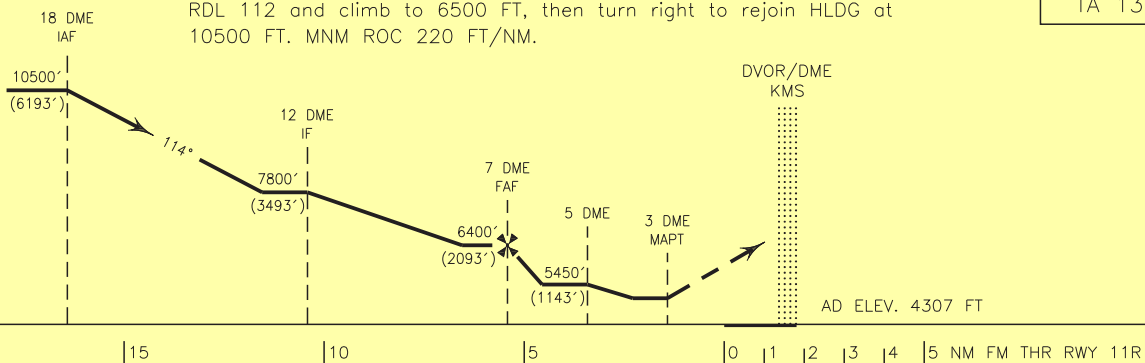
TWR 122.450
121.900
ATIS 126.800

VOR B
CAT A/B/C



MISSED APPROACH: At 3 DME From DVOR/DME climb straight to over DVOR/DME, to intercept RDL 112 and climb to 6500 FT, then turn right to rejoin HLDG at 10500 FT. MNM ROC 220 FT/NM.

TA 13000'



NOTE:

- 1-Circling not authorized to the north of AD.
- 2-Contour intervals are to be selected at 990 FT (300 M).

OCA(H)	A	B	C	D
Straight				
Circling	5100'(793')	5200'(893')	5400'(1093')	

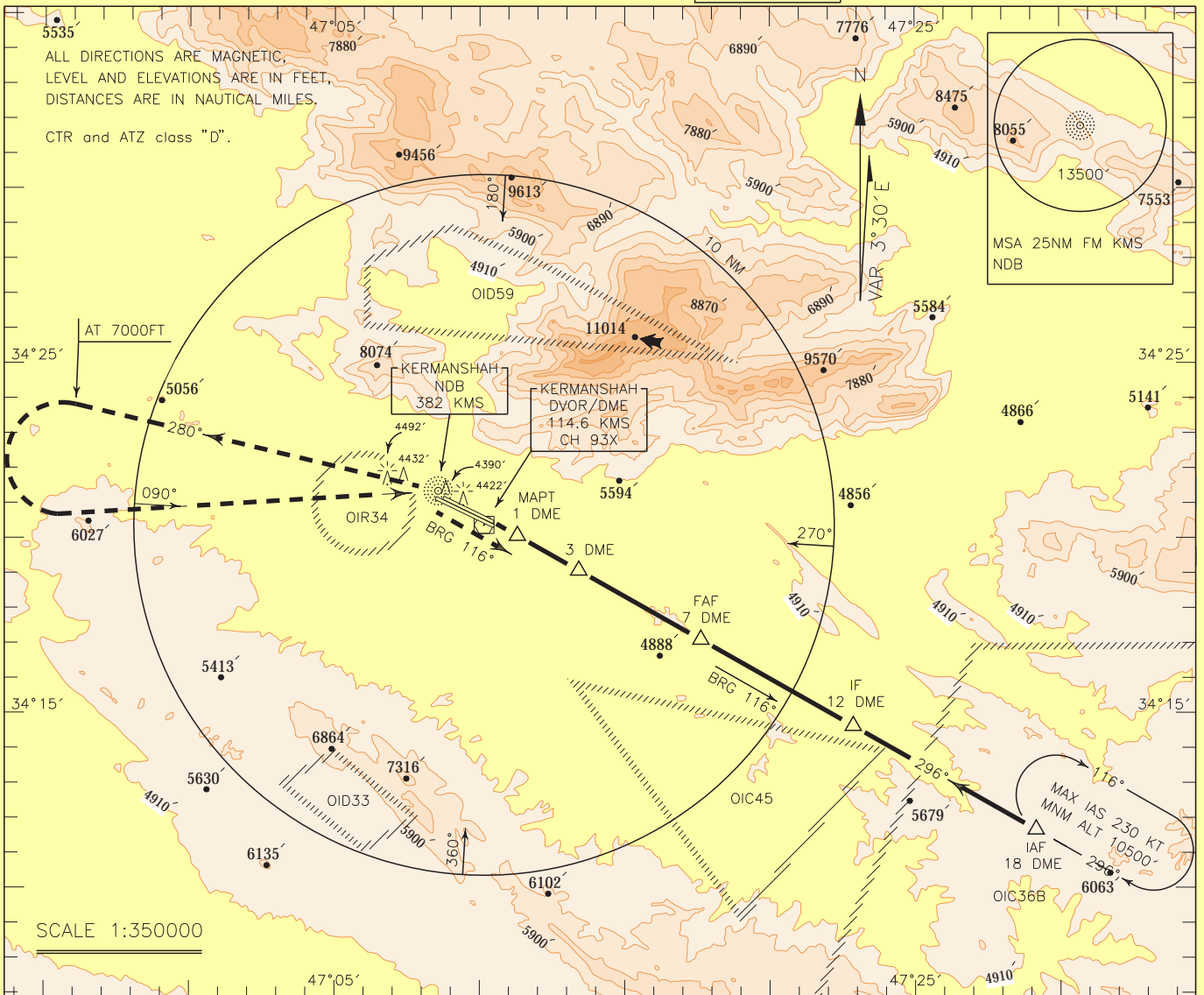
INSTRUMENT
APPROACH
CHART-ICAO

AERODROME ELEV. 4307 FT
HEIGHTS RELATED TO
AERODROME ELEVATION

KERMANSHAH/ SHAHID ASHRAFI ESFAHANI

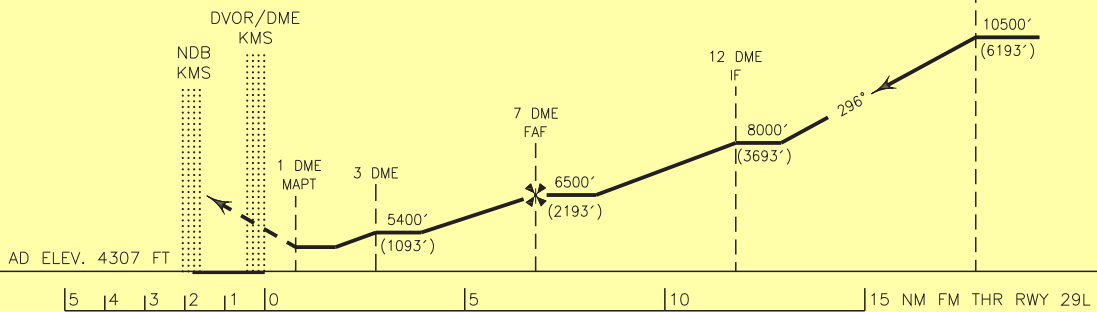
TWR 122.450
121.900
ATIS 126.800

NDB A
CAT A/B/C



MISSED APPROACH: At 1 DME climb to overhead NDB, then climb on BRG 280° to 7000 FT, then turn left to cross overhead NDB to establish BRG 116° to rejoin HLDG at 10500 FT.

TA 13000'



NOTE:

- 1-Circling not authorized to the north of AD.
- 2-Contour intervals are to be selected at 990 FT (300 M).

OCA(H)	A	B	C	D
Straight				
Circling	5100'(793')	5200'(893')	5400'(1093')	

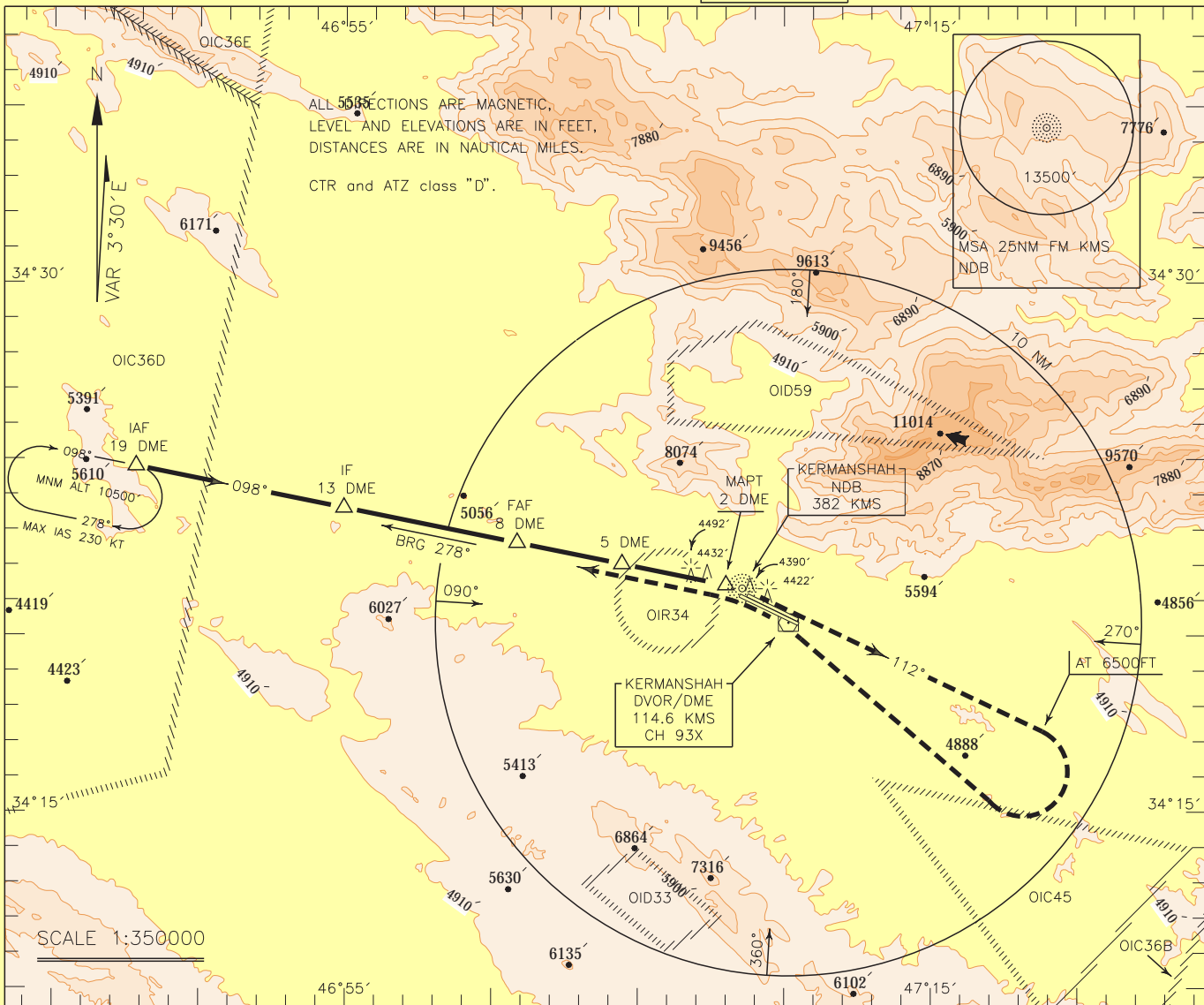
INSTRUMENT
APPROACH
CHART-ICAO

AERODROME ELEV. 4307 FT
HEIGHTS RELATED TO
AERODROME ELEVATION

KERMANSHAH/ SHAHID ASHRAFI ESFAHANI

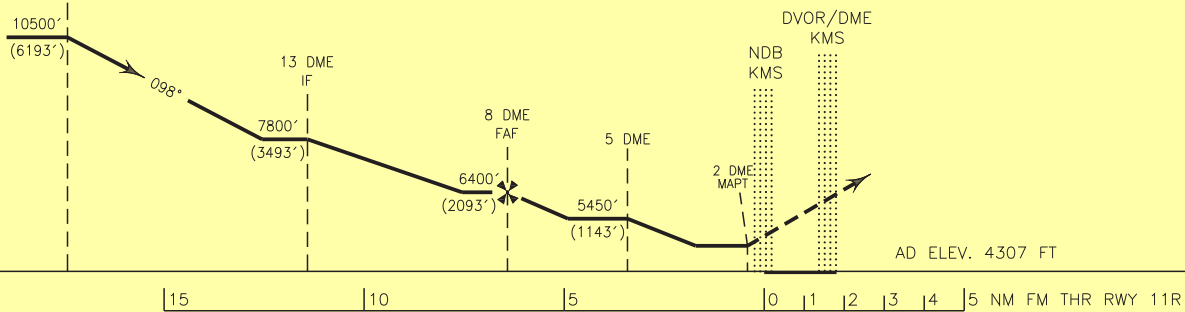
TWR 122.450
121.900
ATIS 126.800

NDB B
CAT A/B/C



MISSED APPROACH: At 2 DME climb to overhead NDB, then climb on BRG 112° to 6500 FT, then turn right to cross overhead NDB to establish BRG 278° to rejoin HLDG at 10500 FT.

TA 13000'



NOTE:

- 1-Circling not authorized to the north of AD.
- 2-Contour intervals are to be selected at 990 FT (300 M).

OCA(H)	A	B	C	D
Straight				
Circling	5100'(793')	5200'(893')	5400'(1093')	

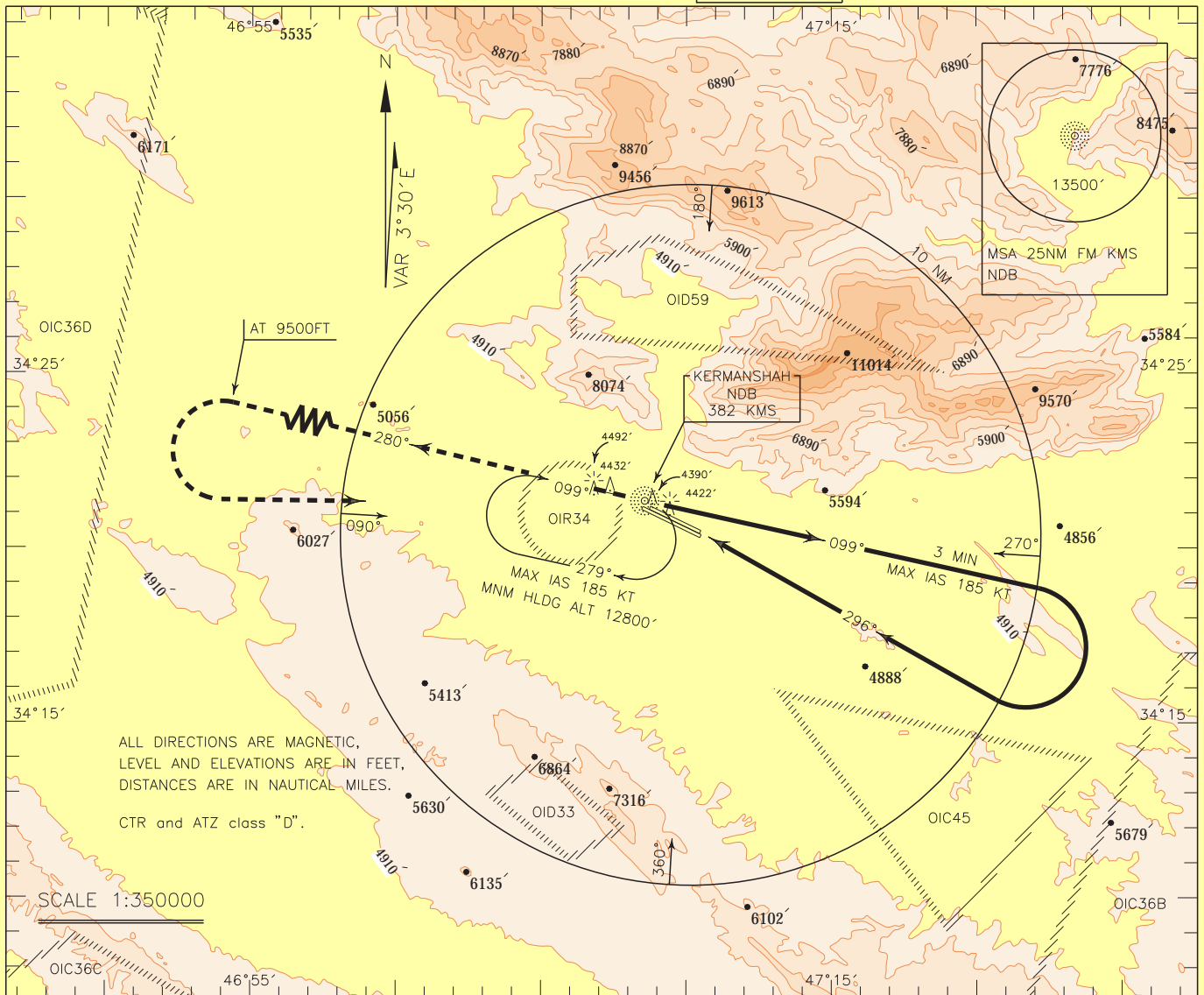
INSTRUMENT
APPROACH
CHART-ICAO

AERODROME ELEV. 4307 FT
HEIGHTS RELATED TO
AERODROME ELEVATION

KERMANSHAH/ SHAHID ASHRAFI ESFAHANI

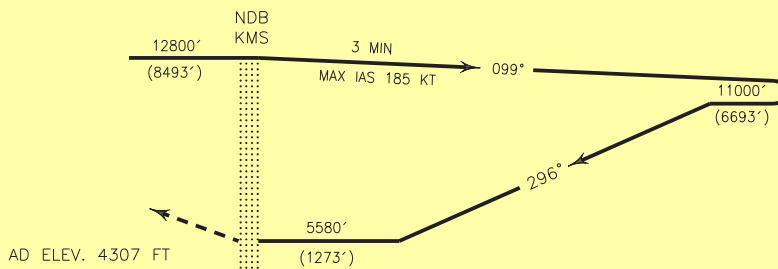
TWR 122.450
121.900
ATIS 126.800

NDB C
CAT C



MISSED APPROACH: Over NDB climb on BRG 280° to 9500 FT, then turn left to rejoin
HLDG at 12800 FT.

TA 13000'



5 14 13 12 11 10 5 10 15 NM FM THR RWY 29L

NOTE:

- 1-Circling not authorized to the north of AD.
- 2-Contour intervals are to be selected at 990 FT (300 M).

OCA(H)	A	B	C	D
Straight				
Circling			5580'(1273')	

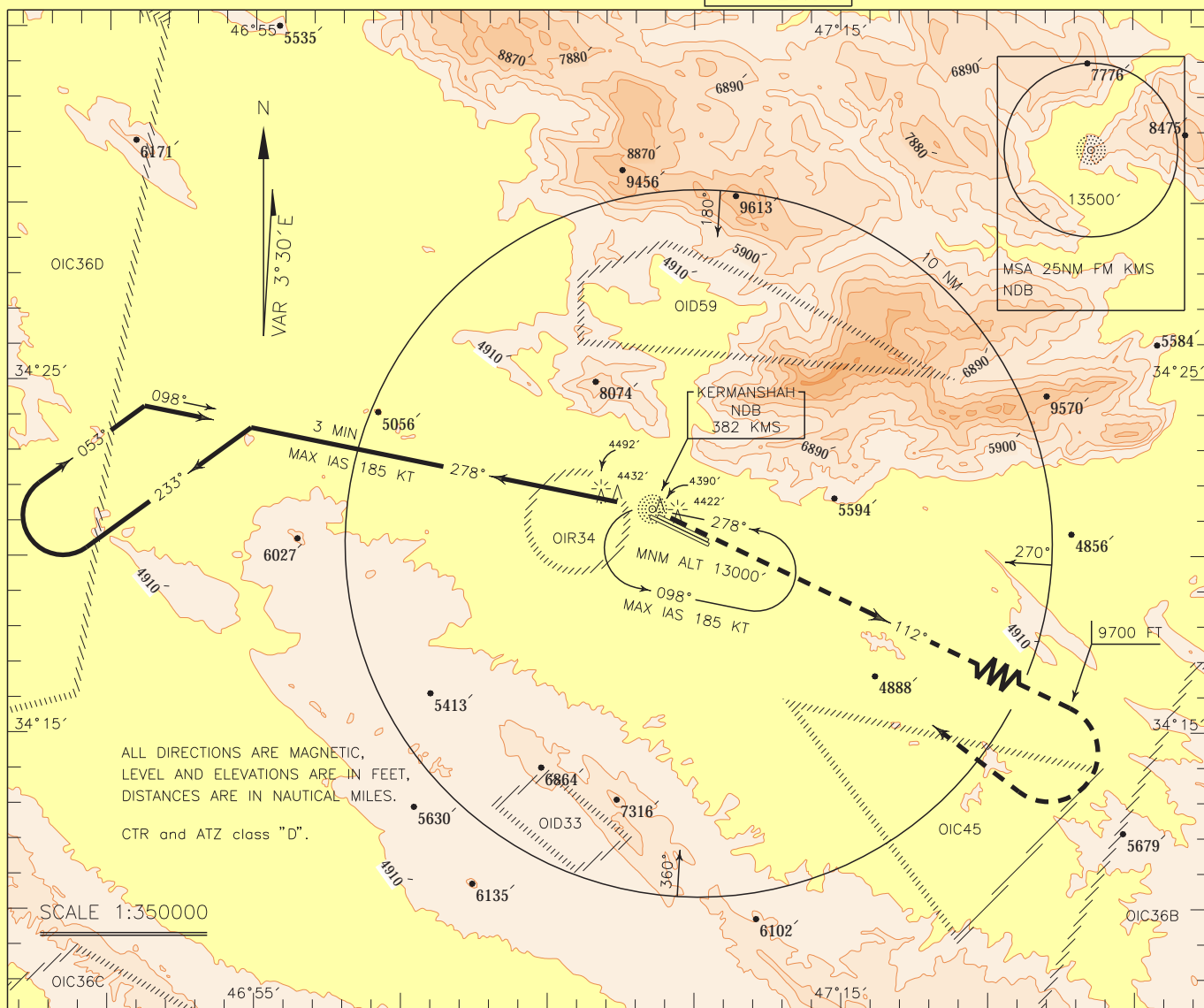
INSTRUMENT
APPROACH
CHART-ICAO

AERODROME ELEV. 4307 FT
HEIGHTS RELATED TO
AERODROME ELEVATION

KERMANSHAH/ SHAHID ASHRAFI ESFAHANI

TWR 122.450
121.900
ATIS 126.800

NDB D
CAT C



MISSED APPROACH: Over NDB climb on BRG 112° to 9700 FT, then turn right to rejoin
HLDG at 13000 FT.

TA 13000'

NOTE:
MNM ROC 220 FT/NM

NOTE:

- 1-Circling not authorized to the north of AD.
- 2-Contour intervals are to be selected at 990 FT (300 M).

OCA(H)	A	B	C	D
Straight				
Circling			5580' (1273')	