

STANDARD DEPARTURE CHART-  
INSTRUMENT (SID)-ICAO

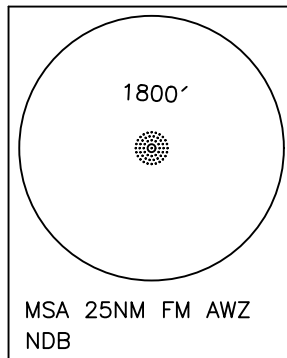
TRANSITION ALTITUDE  
4000 FT

TWR 122.700, 121.100  
121.900  
ATIS 126.400

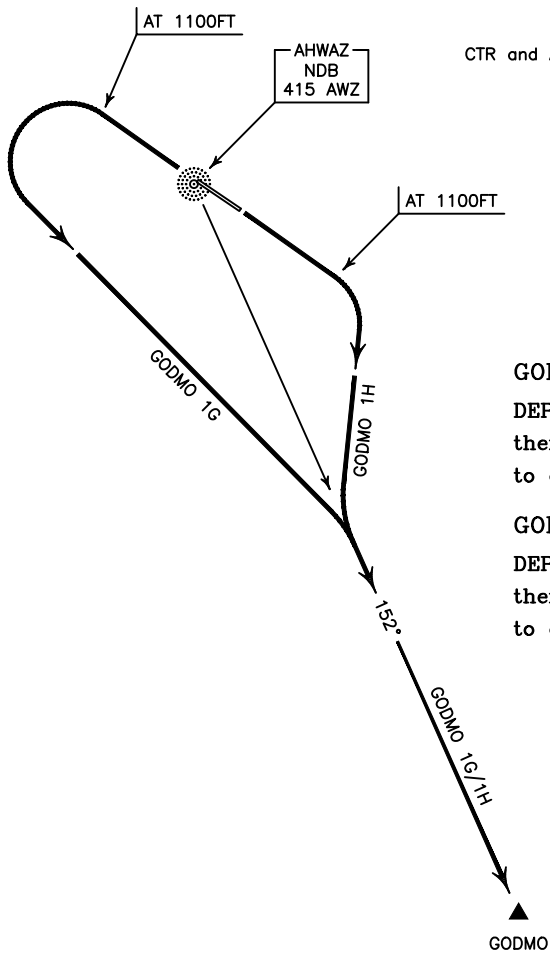
AHWAZ  
RWY 12/30  
GODMO 1G/1H  
GABSU 1G/1H

ALL DIRECTIONS ARE MAGNETIC,  
LEVEL AND ELEVATIONS ARE IN FEET,  
DISTANCES ARE IN NAUTICAL MILES.

CTR and ATZ class "D".



NOT TO SCALE



**GODMO 1G DEP:**

DEP RWY 30 - After take off climb on RWY HDG to 1100 FT, then turn left to establish MAG TR 152° to GODMO and climb to cleared level.

**GODMO 1H DEP:**

DEP RWY 12 - After take off climb on RWY HDG to 1100 FT, then turn right to establish MAG TR 152° to GODMO and climb to cleared level.

**GABSU 1G DEP:**

DEP RWY 30 - After take off climb on RWY HDG to 1100 FT, then turn left to establish MAG TR 201° to GABSU and climb to cleared level.

**GABSU 1H DEP:**

DEP RWY 12 - After take off climb on RWY HDG to 1100 FT, then turn right to establish MAG TR 201° to GABSU and climb to cleared level.

