

STANDARD DEPARTURE CHART-
INSTRUMENT (SID)-ICAO

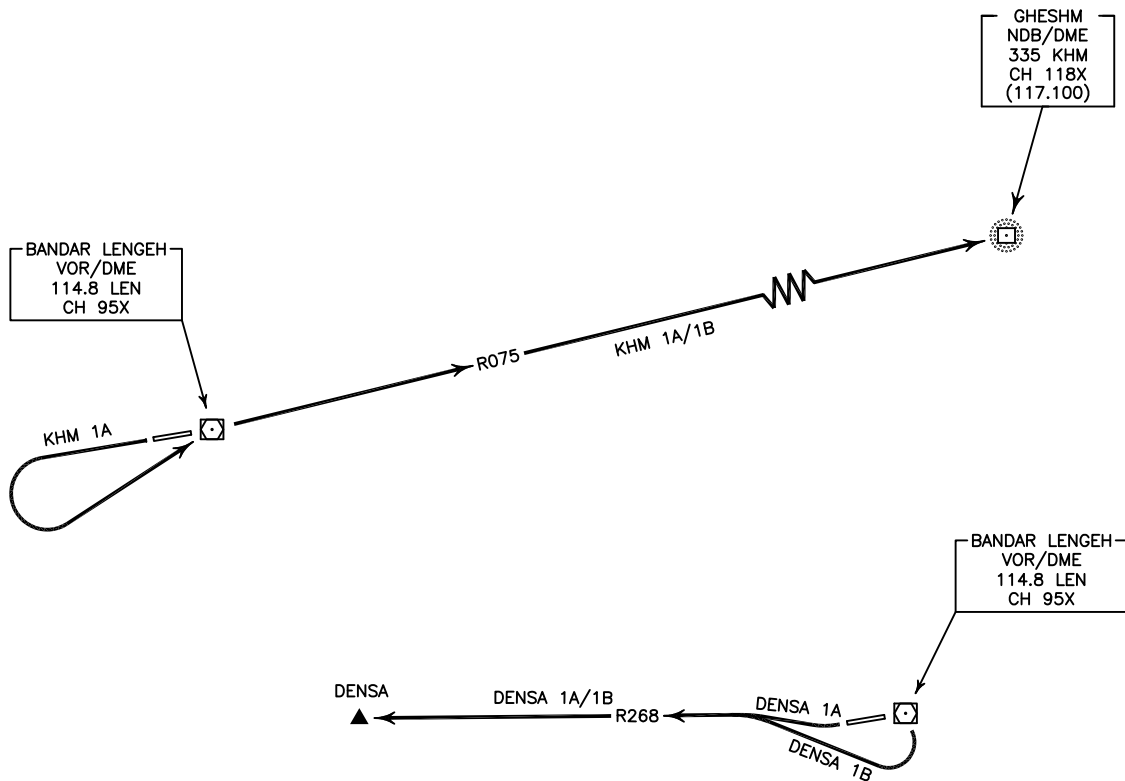
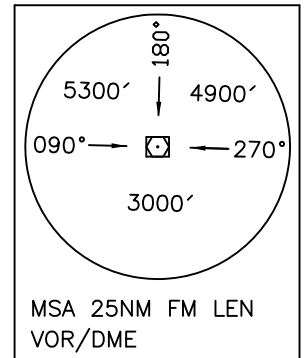
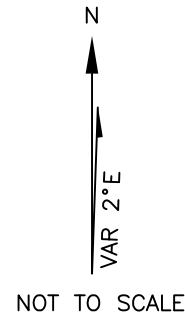
TRANSITION LEVEL	AFIS 122.550
FL 60	121.700
TRANSITION ALTITUDE	
4000 FT	

AFIS 122.550
121.700

BANDAR LENGEH
RWY 08/26
KHM 1A/1B
DENSA 1A/1B

ALL DIRECTIONS ARE MAGNETIC,
LEVEL AND ELEVATIONS ARE IN FEET,
DISTANCES ARE IN NAUTICAL MILES.

ATZ class "G".



KHM 1A DEP:

DEP RWY 26 - After take off turn left climb to overhead VOR/DME, then proceed on RDL 075 to KHM NDB/DME and climb to cleared level.

KHM 1B DEP:

DEP RWY 08 - After take off turn left climb on RDL 075 to KHM NDB/DME and climb to cleared level.

DENSA 1A DEP:

DEP RWY 26 - After take off turn right climb on RDL 268 to DENSA and climb to cleared level.
MNM rate of climb 250 FT/NM.

DENSA 1B DEP:

DEP RWY 08 - After take off turn right climb on RDL 268 to DENSA and climb to cleared level.
MNM rate of climb 250 FT/NM.