

STANDARD DEPARTURE CHART-
INSTRUMENT (SID)-ICAO

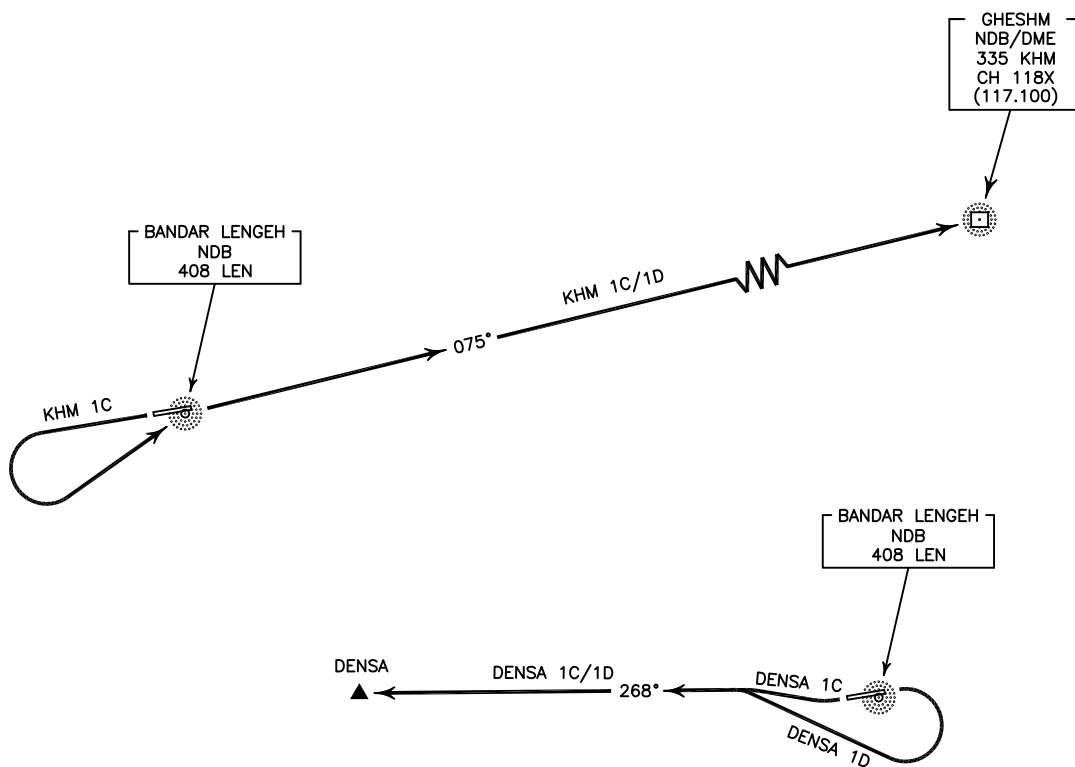
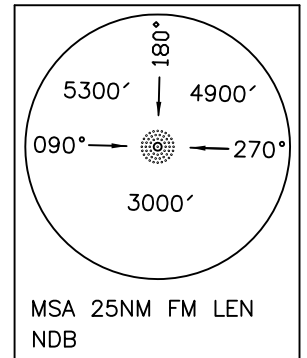
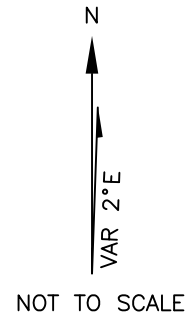
TRANSITION LEVEL FL 60
TRANSITION ALTITUDE 4000 FT

AFIS 122.550
121.700

BANDAR LENGEH
RWY 08/26
KHM 1C/1D
DENSA 1C/1D

ALL DIRECTIONS ARE MAGNETIC,
LEVEL AND ELEVATIONS ARE IN FEET,
DISTANCES ARE IN NAUTICAL MILES.

ATZ class "G".



KHM 1C DEP:

DEP RWY 26 - After take off turn left climb to overhead LEN NDB, then proceed on BRG 075° to KHM NDB/DME and climb to cleared level.

KHM 1D DEP:

DEP RWY 08 - After take off climb on BRG 075° KHM NDB/DME and climb to cleared level.

DENSA 1C DEP:

DEP RWY 26 - After take off turn right climb on BRG 268° to DENSA and climb to cleared level.
MNM rate of climb 270 FT/NM.

DENSA 1D DEP:

DEP RWY 08 - After take off turn right climb on BRG 268° to DENSA and climb to cleared level.
MNM rate of climb 250 FT/NM.