

STANDARD ARRIVAL CHART-
INSTRUMENT (STAR)-ICAO

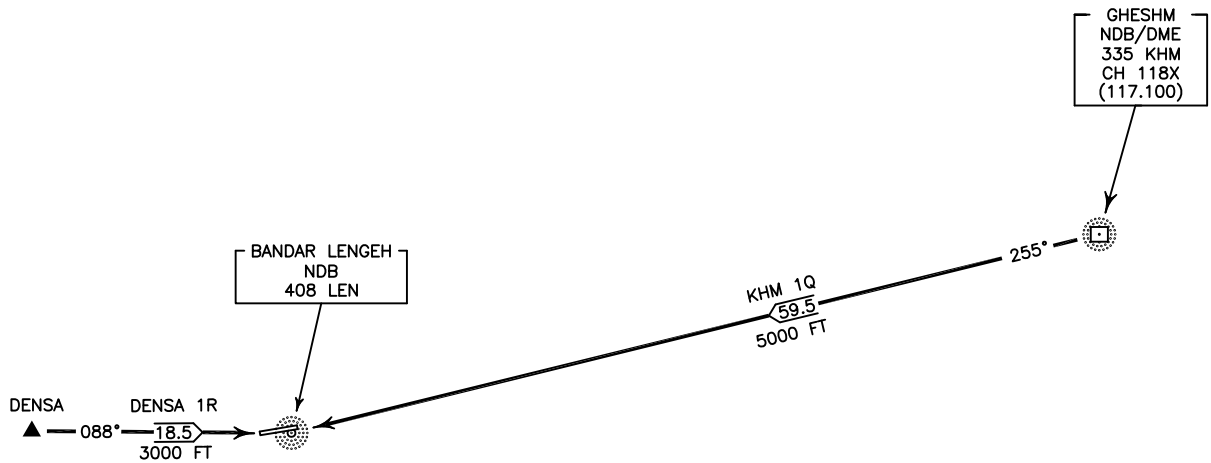
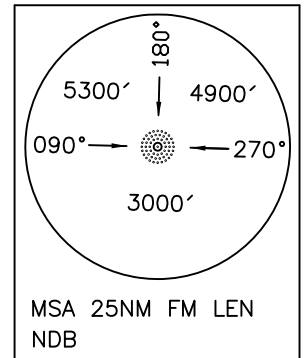
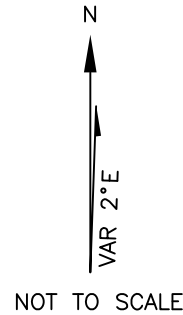
TRANSITION LEVEL FL 60
TRANSITION ALTITUDE 4000 FT

AFIS 122.550
121.700

BANDAR LENGEH
RWY 08/26
KHM 1Q
DENSA 1R

ALL DIRECTIONS ARE MAGNETIC,
LEVEL AND ELEVATIONS ARE IN FEET,
DISTANCES ARE IN NAUTICAL MILES.

ATZ class "G".



KHM 1Q ARR:

FM KHM NDB/DME proceed to overhead LEN NDB, MAG TR 255°, DIST 59.5 NM, MNM ALT 5000 FT.

DENSA 1R ARR:

FM DENSA proceed to overhead LEN NDB, MAG TR 088°, DIST 18.5 NM, MNM ALT 3000 FT.