

STANDARD DEPARTURE CHART-
INSTRUMENT (SID)-ICAO

| |
|--------------------------------|
| TRANSITION LEVEL FL 110 |
| TRANSITION ALTITUDE 9000 FT |

| |
|---------------------------------------|
| INFO 118.400, 121.650 ATIS 127.050 |
|---------------------------------------|

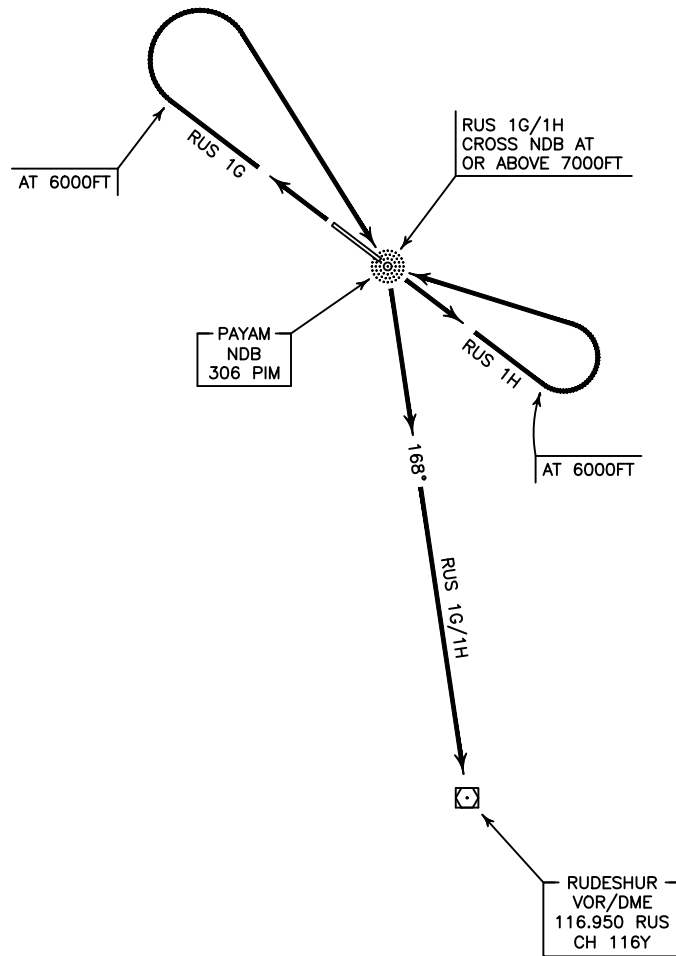
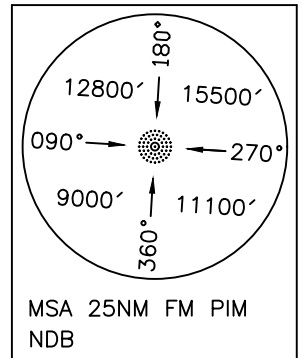
KARAJ/PAYAM
RWY 12/30
RUS 1G/1H

ALL DIRECTIONS ARE MAGNETIC.
LEVEL AND ELEVATIONS ARE IN FEET.
DISTANCES ARE IN NAUTICAL MILES.

ATZ class "G".



NOT TO SCALE



All departure from Payam AD are subject to Mehrabad approach clearances.

RUS 1G DEP:

DEP RWY 30 - After take off climb on RWY heading to 6000 FT, then turn right to cross PIM NDB at or above 7000 FT, then intercept BRG 168° to RUS VOR/DME and climb to cleared level.

RUS 1H DEP:

DEP RWY 12 - After take off climb on RWY heading to 6000 FT, then turn left to cross PIM NDB at or above 7000 FT, then intercept BRG 168° to RUS VOR/DME and climb to cleared level.