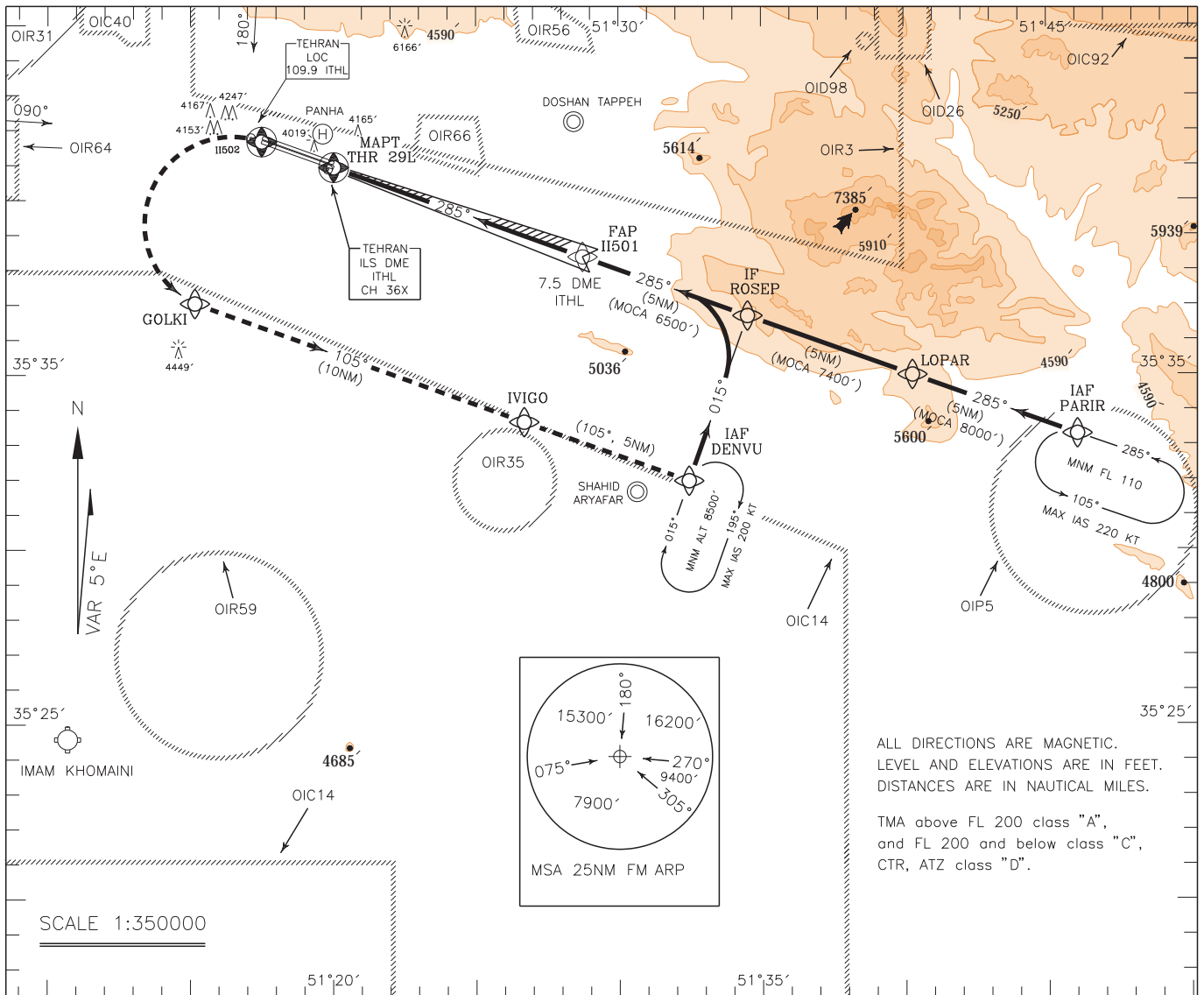


INSTRUMENT
APPROACH
CHART-ICAO

AERODROME ELEV. 3956 FT
HEIGHTS RELATED TO
THR RWY 29L ELEV. 3797 FT

RADAR	125.100, 119.700, 124.450
APP	125.100, 119.700, 124.450
TWR	118.100
GND	121.700, 121.900
ATIS	128.000

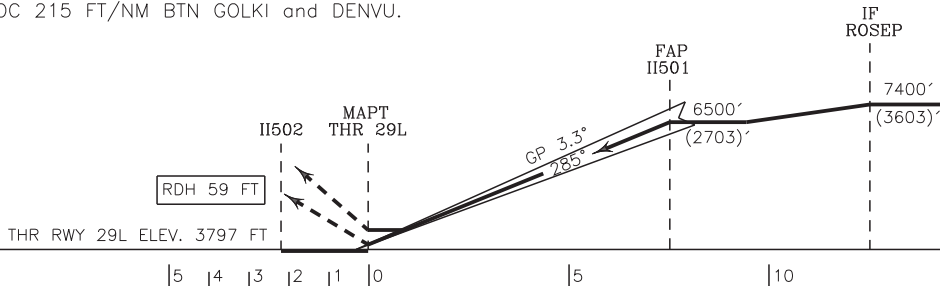
TEHRAN/MEHRABAD
ILS Z or LOC Z RWY 29L
CAT A/B/C/D



MISSED APPROACH: Over THR 29L climb straight ahead to 11502, then turn left to IVIGO via GOLKI and climb to 7000 FT, after IVIGO climb to 8500 FT to join HLDG.

TRL FL110
TA 9000'

NOTE:
MNM ROC 215 FT/NM BTN GOLKI and DENVU.



NOTE:
1-Circling not authorized to the north of AD. 2-Contour intervals are to be selected at 660 FT.

OCA(H)		A	B	C	D
Straight-in Approach	CAT I	4040' (243')			
	LOC (GP INOP)	4450' (653')			
Circling					