

STANDARD DEPARTURE CHART-
INSTRUMENT (SID)-ICAO

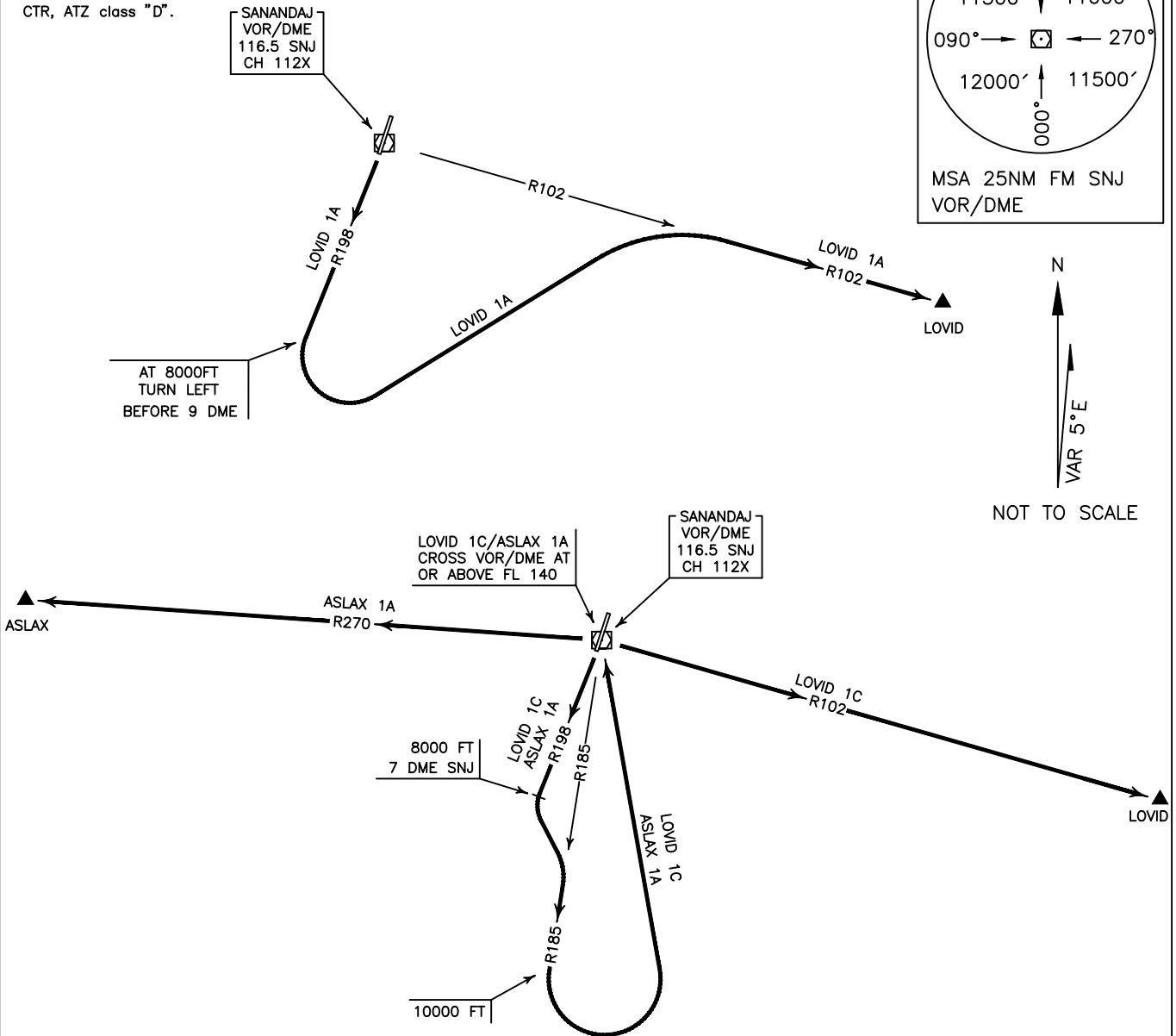
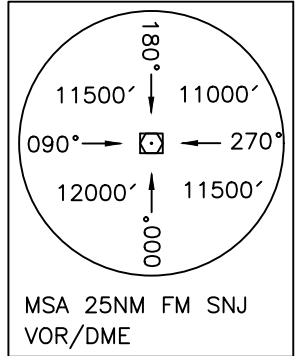
| | |
|---------------------------------|--------------------------------------|
| TRANSITION ALTITUDE 11000 FT | TWR 122.900, 121.900 ATIS 128.450 |
|---------------------------------|--------------------------------------|

SANANDAJ
RWY 19
LOVID 1A/1C
ASLAX 1A

ALL DIRECTIONS ARE MAGNETIC.
LEVEL AND ELEVATIONS ARE IN FEET.
DISTANCES ARE IN NAUTICAL MILES.

CTR, ATZ class "D".

Caution:
Aerodrome surrounded by mountainous terrain



LOVID 1A DEP:

DEP RWY 19 - After take off climb on RDL 198 to 8000 FT, then turn left (not later than 9 NM) to intercept RDL 102 to LOVID and climb to cleared level. MNM rate of climb 400 FT/NM.

LOVID 1C DEP:

DEP RWY 19 - After take off climb on RDL 198 to 8000 FT, at 7 DME turn left to intercept RDL 185 to 10000 FT, then turn left to cross overhead SNJ VOR/DME at or above FL 140, then intercept RDL 102 to LOVID and climb to cleared level. MNM rate of climb 400 FT/NM up to overhead SNJ VOR/DME. MNM level at LOVID FL 190.

ASLAX 1A DEP:

DEP RWY 19 - After take off climb on RDL 198 to 8000 FT, at 7 DME turn left to intercept RDL 185 to 10000 FT, then turn left to cross overhead SNJ VOR/DME at or above FL 140, then intercept RDL 270 to ASLAX and climb to cleared level. MNM rate of climb 400 FT/NM up to overhead SNJ VOR/DME.