

STANDARD DEPARTURE CHART-  
INSTRUMENT (SID)-ICAO

TRANSITION ALTITUDE  
5000 FT

TWR 118.100  
121.800  
ATIS 126.850

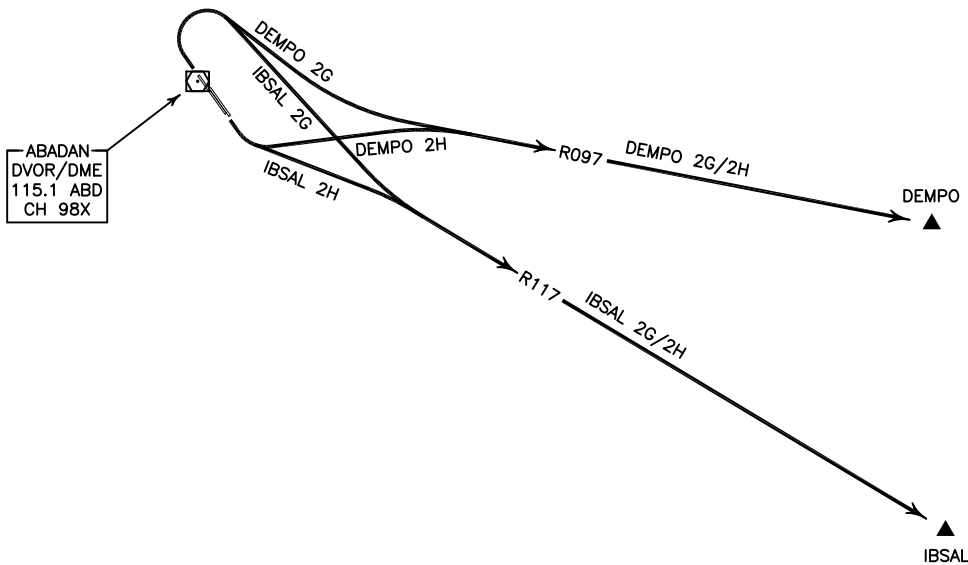
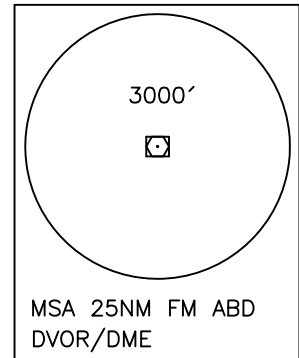
ABADAN  
RWY 14R/32L  
DEMPO 2G/2H  
IBSAL 2G/2H

ALL DIRECTIONS ARE MAGNETIC.  
LEVEL AND ELEVATIONS ARE IN FEET.  
DISTANCES ARE IN NAUTICAL MILES.

ATZ class "D".



NOT TO SCALE



**DEMPO 2G DEP:**

DEP RWY 32L - After take off turn right to intercept RDL 097 to DEMPO and climb to cleared level.

**DEMPO 2H DEP:**

DEP RWY 14R - After take off turn left to intercept RDL 097 to DEMPO and climb to cleared level.

**IBSAL 2G DEP:**

DEP RWY 32L - After take off turn right to intercept RDL 117 to IBSAL and climb to cleared level.

**IBSAL 2H DEP:**

DEP RWY 14R - After take off turn left to intercept RDL 117 to IBSAL and climb to cleared level.