

STANDARD ARRIVAL CHART-
INSTRUMENT (STAR)-ICAO

TRANSITION ALTITUDE
5000 FT

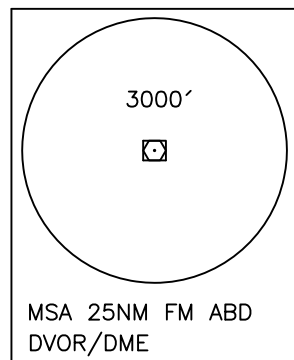
TWR 118.100
121.800
ATIS 126.850

ABADAN
RWY 14R/32L
GABSU 2N/2P, BOPIS 1N/2P
DEMPO 1N/2P

ALL DIRECTIONS ARE MAGNETIC.
LEVEL AND ELEVATIONS ARE IN FEET.
DISTANCES ARE IN NAUTICAL MILES.

ATZ class "D".

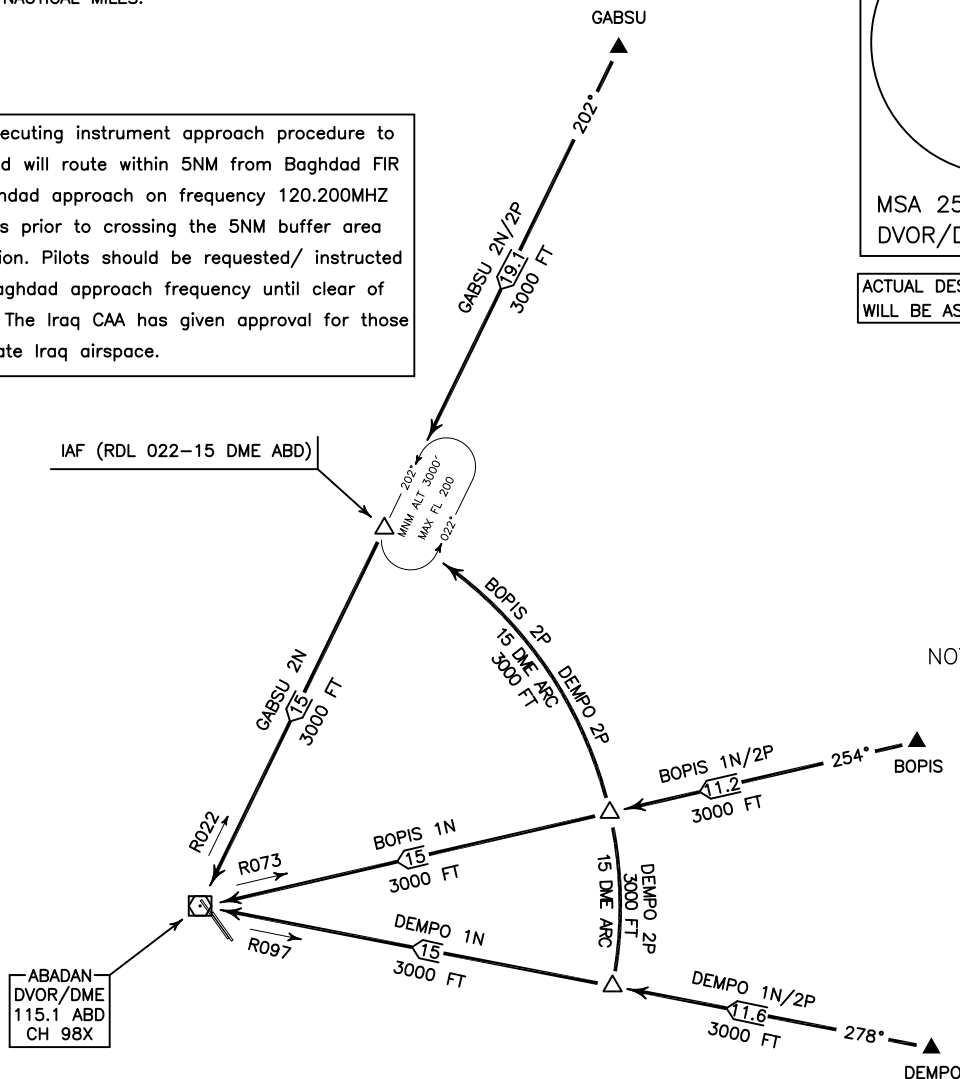
Note: Aircraft executing instrument approach procedure to Abadan airport and will route within 5NM from Baghdad FIR shall contact Baghdad approach on frequency 120.200MHZ at least 8 minutes prior to crossing the 5NM buffer area to obtain permission. Pilots should be requested/ instructed to monitor the Baghdad approach frequency until clear of the Baghdad FIR. The Iraq CAA has given approval for those aircraft to penetrate Iraq airspace.



ACTUAL DESCENT CLEARANCE
WILL BE AS DIRECTED BY ATC.



NOT TO SCALE



GABSU 2N ARR:

FM GABSU proceed to overhead ABD DVOR/DME, MAG TR 202°, DIST 34.1 NM, MNM ALT 3000 FT.

GABSU 2P ARR:

FM GABSU proceed to IAF (RDL 022-15 DME), MAG TR 202°, DIST 19.1 NM, MNM ALT 3000 FT.

BOPIS 1N ARR:

FM BOPIS proceed to overhead ABD DVOR/DME, MAG TR 254°, DIST 26.2 NM, MNM ALT 3000 FT.

BOPIS 2P ARR:

FM BOPIS proceed to IAF (RDL 022-15 DME), MAG TR 254°, at 15 DME turn right for 15 DME arc to IAF, MNM ALT 3000 FT.

DEMPO 1N ARR:

FM DEMPO proceed to overhead ABD DVOR/DME, MAG TR 278°, DIST 26.6 NM, MNM ALT 3000 FT.

DEMPO 2P ARR:

FM DEMPO proceed to IAF (RDL 022-15 DME), MAG TR 278°, at 15 DME turn right for 15 DME arc to IAF, MNM ALT 3000 FT.