

STANDARD ARRIVAL CHART-
INSTRUMENT (STAR)-ICAO

TRANSITION ALTITUDE
5000 FT

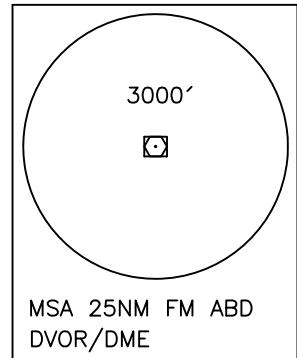
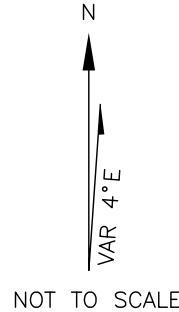
TWR 118.100
121.800
ATIS 126.850

ABADAN
RWY 14R/32L
BOPIS 1Q
DEMPO 1Q, IBSAL 1N/1Q

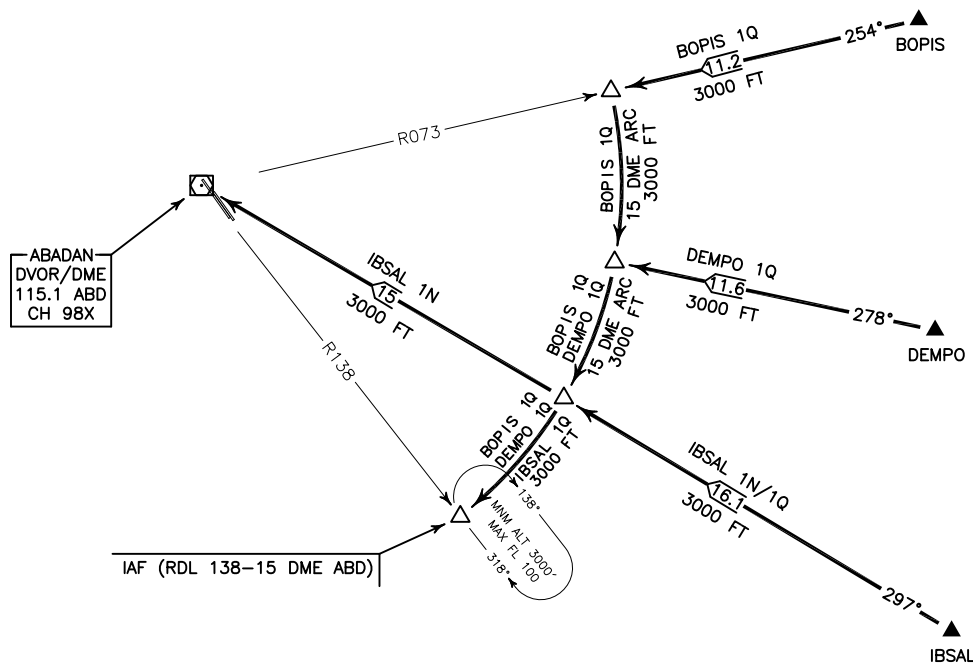
ALL DIRECTIONS ARE MAGNETIC.
LEVEL AND ELEVATIONS ARE IN FEET.
DISTANCES ARE IN NAUTICAL MILES.

ATZ class "D".

Note: Aircraft executing instrument approach procedure to Abadan airport and will route within 5NM from Baghdad FIR shall contact Baghdad approach on frequency 120.200MHZ at least 8 minutes prior to crossing the 5NM buffer area to obtain permission. Pilots should be requested/ instructed to monitor the Baghdad approach frequency until clear of the Baghdad FIR. The Iraq CAA has given approval for those aircraft to penetrate Iraq airspace.



ACTUAL DESCENT CLEARANCE
WILL BE AS DIRECTED BY ATC.



BOPIS 1Q ARR:

FM BOPIS proceed to IAF (RDL 138-15 DME), MAG TR 254°, DIST 11.2 NM, at 15 DME turn left for 15 DME arc to IAF, MNM ALT 3000 FT.

DEMPO 1Q ARR:

FM DEMPO proceed to IAF (RDL 138-15 DME), MAG TR 278°, DIST 11.6 NM, at 15 DME turn left for 15 DME arc to IAF, MNM ALT 3000 FT.

IBSAL 1N ARR:

FM IBSAL proceed to overhead ABD DVOR/DME, MAG TR 297°, DIST 31.1 NM, MNM ALT 3000 FT.

IBSAL 1Q ARR:

FM IBSAL proceed to IAF (RDL 138-15 DME), MAG TR 297°, DIST 16.1 NM, at 15 DME turn left for 15 DME arc to IAF, MNM ALT 3000 FT.