

STANDARD ARRIVAL CHART-  
INSTRUMENT (STAR)-ICAO

TRANSITION ALTITUDE  
5000 FT

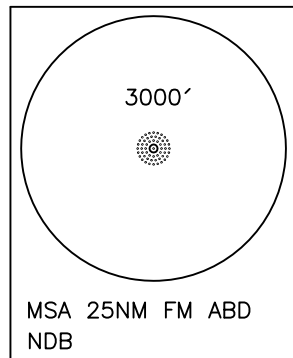
TWR 118.100  
121.800  
ATIS 126.850

ABADAN  
RWY 14R/32L  
GABSU 2T, BOPIS 2T  
DEMPO 2T

ALL DIRECTIONS ARE MAGNETIC.  
LEVEL AND ELEVATIONS ARE IN FEET.  
DISTANCES ARE IN NAUTICAL MILES.

ATZ class "D".

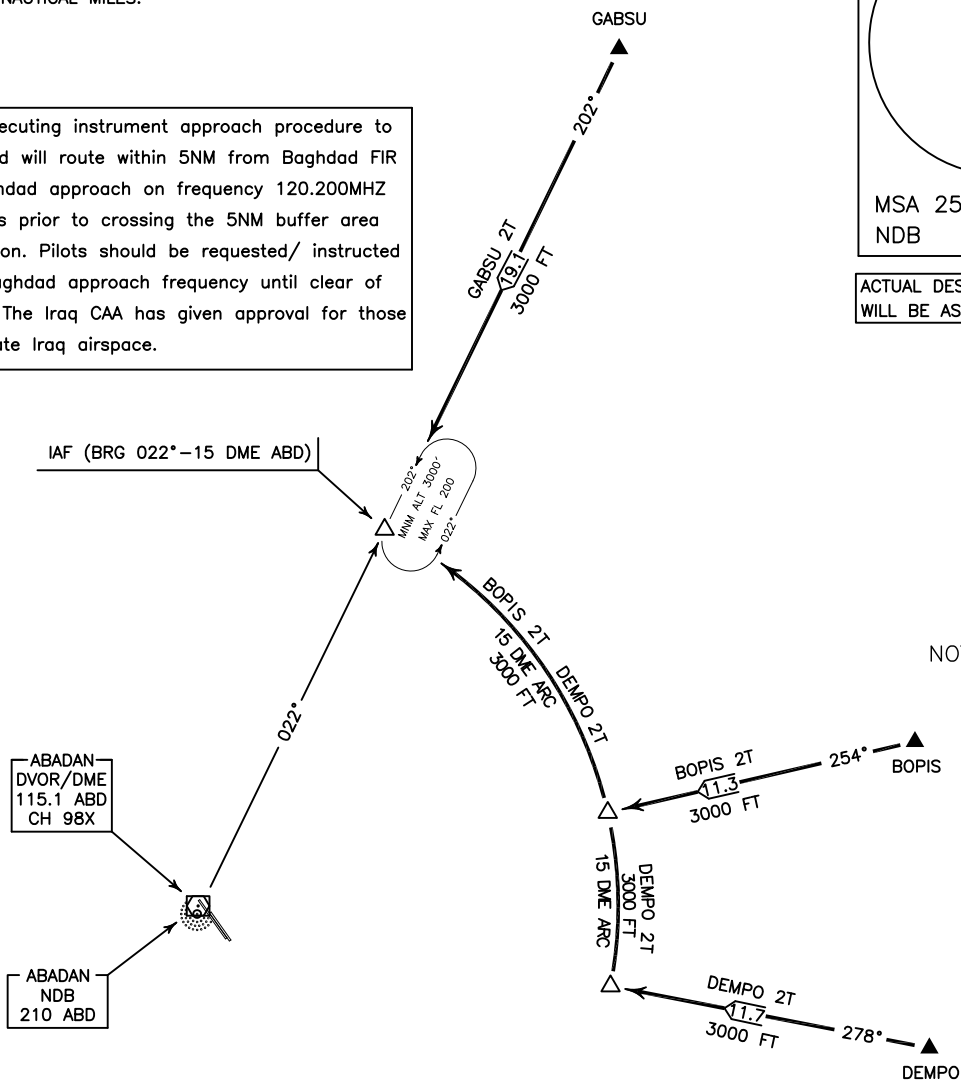
**Note:** Aircraft executing instrument approach procedure to Abadan airport and will route within 5NM from Baghdad FIR shall contact Baghdad approach on frequency 120.200MHZ at least 8 minutes prior to crossing the 5NM buffer area to obtain permission. Pilots should be requested/ instructed to monitor the Baghdad approach frequency until clear of the Baghdad FIR. The Iraq CAA has given approval for those aircraft to penetrate Iraq airspace.



ACTUAL DESCENT CLEARANCE  
WILL BE AS DIRECTED BY ATC.



NOT TO SCALE



**GABSU 2T ARR:**

FM GABSU proceed to IAF (BRG 022°-15 DME), MAG TR 202°, DIST 19.1 NM, MNM ALT 3000 FT.

**BOPIS 2T ARR:**

FM BOPIS proceed to IAF (BRG 022°-15 DME), MAG TR 254°, DIST 11.3 NM, at 15 DME turn right for 15 DME arc to IAF, MNM ALT 3000 FT.

**DEMPO 2T ARR:**

FM DEMPO proceed to IAF (BRG 022°-15 DME), MAG TR 278°, DIST 11.7 NM, at 15 DME turn right for 15 DME arc to IAF, MNM ALT 3000 FT.