

STANDARD DEPARTURE CHART-  
INSTRUMENT (SID)-ICAO

TRANSITION ALTITUDE 11500 FT
TRANSITION LEVEL FL 135

INFO 122.100 129.000
-------------------------

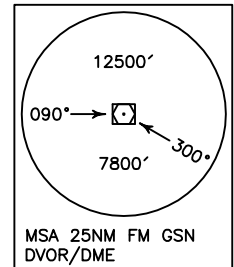
GACHSARAN/GACHSARAN  
RWY 12/30  
YASOUJ 1A/1B

ALL DIRECTIONS ARE MAGNETIC,  
LEVEL AND ELEVATIONS ARE IN FEET,  
DISTANCES ARE IN NAUTICAL MILES.

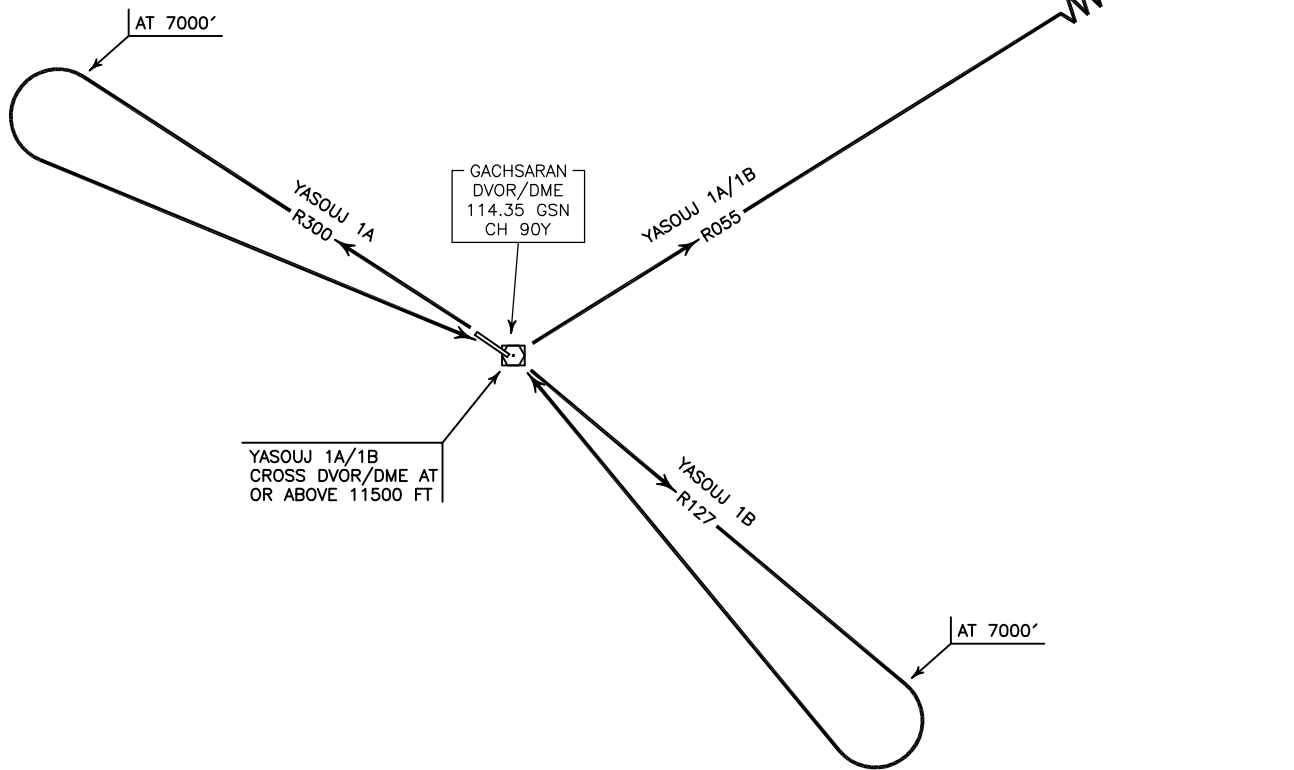
ATZ class "G".



NOT TO SCALE



YASOUJ  
NDB/DME  
235 YSJ  
CH 112Y  
116.55



**YASOUJ 1A DEP:**

DEP RWY 30 - After take off climb on RDL 300 to 7000 FT, then turn left to cross overhead DVOR/DME at or above 11500 FT, then intercept RDL 055 to YSJ NDB/DME and climb to cleared level.  
MNM rate of climb up to overhead DVOR/DME, 250 FT/NM.

**YASOUJ 1B DEP:**

DEP RWY 12 - After take off climb on RDL 127 to 7000 FT, then turn right to cross overhead DVOR/DME at or above 11500 FT, then intercept RDL 055 to YSJ NDB/DME and climb to cleared level.  
MNM rate of climb up to overhead DVOR/DME, 250 FT/NM.