

STANDARD ARRIVAL CHART-  
INSTRUMENT (STAR)-ICAO

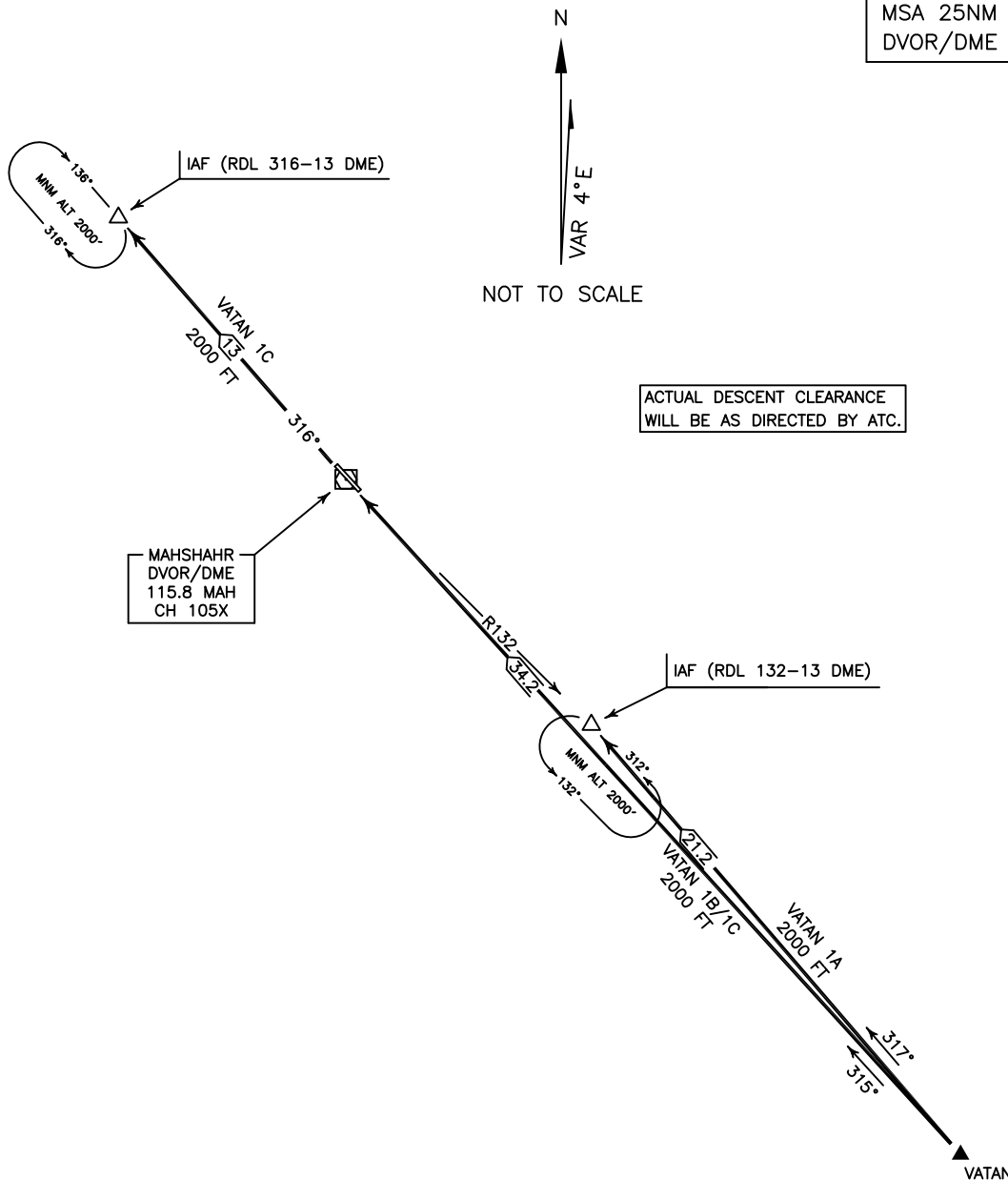
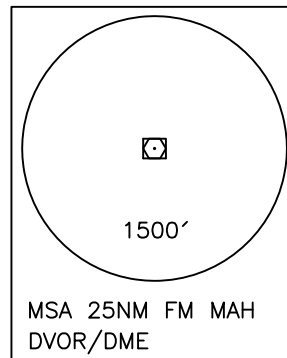
TRANSITION LEVEL FL 50
TRANSITION ALTITUDE 3000 FT

INFO 118.650

BANDAR MAHSHAHR/MAHSHAHR  
RWY 13/31  
VATAN 1A/1B/1C

ALL DIRECTIONS ARE MAGNETIC,  
LEVEL AND ELEVATIONS ARE IN FEET,  
DISTANCES ARE IN NAUTICAL MILES.

ATZ class "G".



VATAN 1A ARR:

FM VATAN proceed to IAF (RDL 132-13 DME), MAG TR 317°, DIST 21.2 NM, MNM ALT 2000 FT.

VATAN 1B ARR:

FM VATAN proceed to MAH DVOR/DME, MAG TR 315°, DIST 34.2 NM, MNM ALT 2000 FT.

VATAN 1C ARR:

FM VATAN proceed to IAF (RDL 316-13 DME), MAG TR 315°, DIST 34.2 NM, then proceed on  
MAG TR 316° to IAF, DIST 13 NM, MNM ALT 2000 FT.