

STANDARD ARRIVAL CHART-  
INSTRUMENT (STAR)-ICAO

TRANSITION LEVEL FL 50
TRANSITION ALTITUDE 3000 FT

INFO 118.650

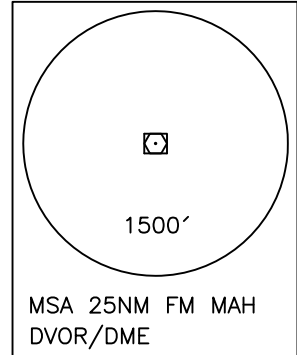
BANDAR MAHSHAHR/MAHSHAHR  
RWY 31/13  
BOPIS 1A/1B/1C

ALL DIRECTIONS ARE MAGNETIC,  
LEVEL AND ELEVATIONS ARE IN FEET,  
DISTANCES ARE IN NAUTICAL MILES.

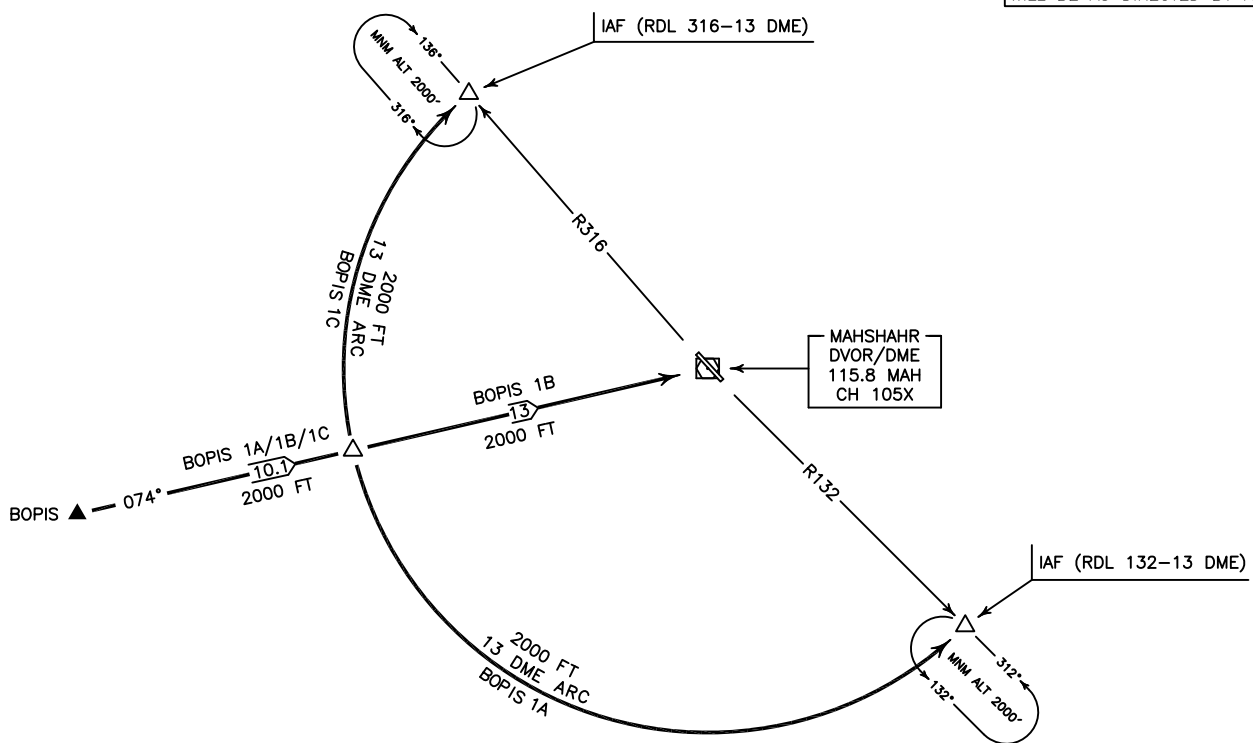
ATZ class "G".



NOT TO SCALE



ACTUAL DESCENT CLEARANCE  
WILL BE AS DIRECTED BY ATC.



**BOPIS 1A ARR:**

FM BOPIS proceed to IAF (RDL 132-13 DME), MAG TR 074°, DIST 10.1 NM, at 13 DME turn right for 13 DME arc to IAF, MNM ALT 2000 FT.

**BOPIS 1B ARR:**

FM BOPIS proceed to MAH DVOR/DME, MAG TR 074°, DIST 23.1 NM, MNM ALT 2000 FT.

**BOPIS 1C ARR:**

FM BOPIS proceed to IAF (RDL 316-13 DME), MAG TR 074°, DIST 10.1 NM, at 13 DME turn left for 13 DME arc to IAF, MNM ALT 2000 FT.