

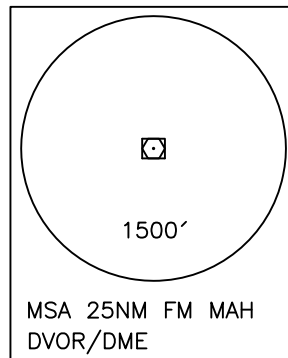
STANDARD ARRIVAL CHART-
INSTRUMENT (STAR)-ICAO

TRANSITION LEVEL FL 50
TRANSITION ALTITUDE 3000 FT

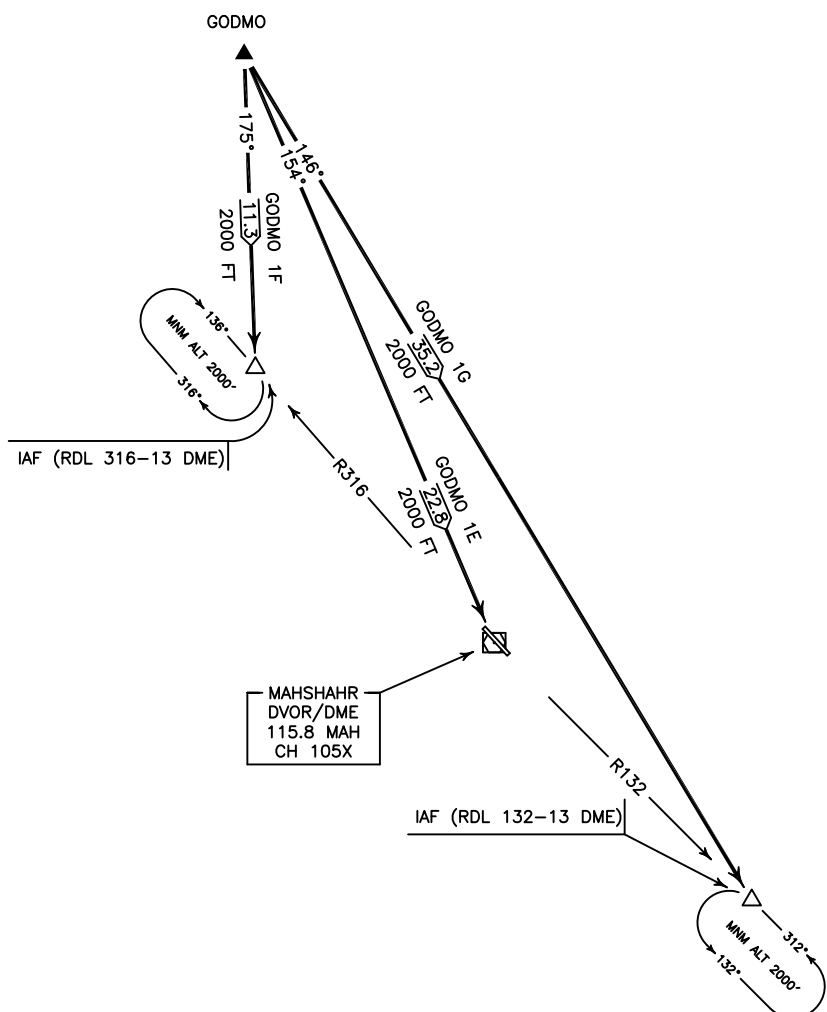
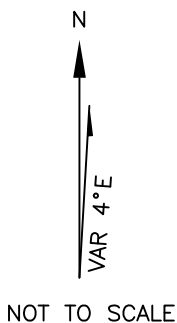
AFIS 118.650 BANDAR MAHSHAHR/MAHSHAHR
RWY 31/13
GODMO 1E/1F/1G

ALL DIRECTIONS ARE MAGNETIC,
LEVEL AND ELEVATIONS ARE IN FEET,
DISTANCES ARE IN NAUTICAL MILES.

ATZ class "G".



ACTUAL DESCENT CLEARANCE
WILL BE AS DIRECTED BY ATC.



GODMO 1E ARR:

FM GODMO proceed to MAH DVOR/DME, MAG TR 154°, DIST 22.8 NM, MNM ALT 2000 FT.

GODMO 1F ARR:

FM GODMO proceed to IAF (RDL 316-13 DME), MAG TR 175°, DIST 11.3 NM, MNM ALT 2000 FT.

GODMO 1G ARR:

FM GODMO proceed to IAF (RDL 132-13 DME), MAG TR 146°, DIST 35.2 NM, MNM ALT 2000 FT.