

STANDARD ARRIVAL CHART-
INSTRUMENT (STAR)-ICAO

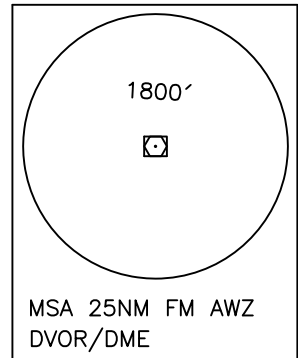
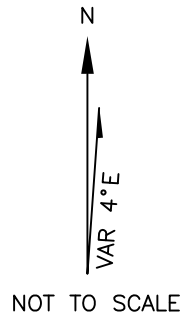
TRANSITION ALTITUDE
4000 FT

TWR 122.700, 121.100
121.900
ATIS 126.400

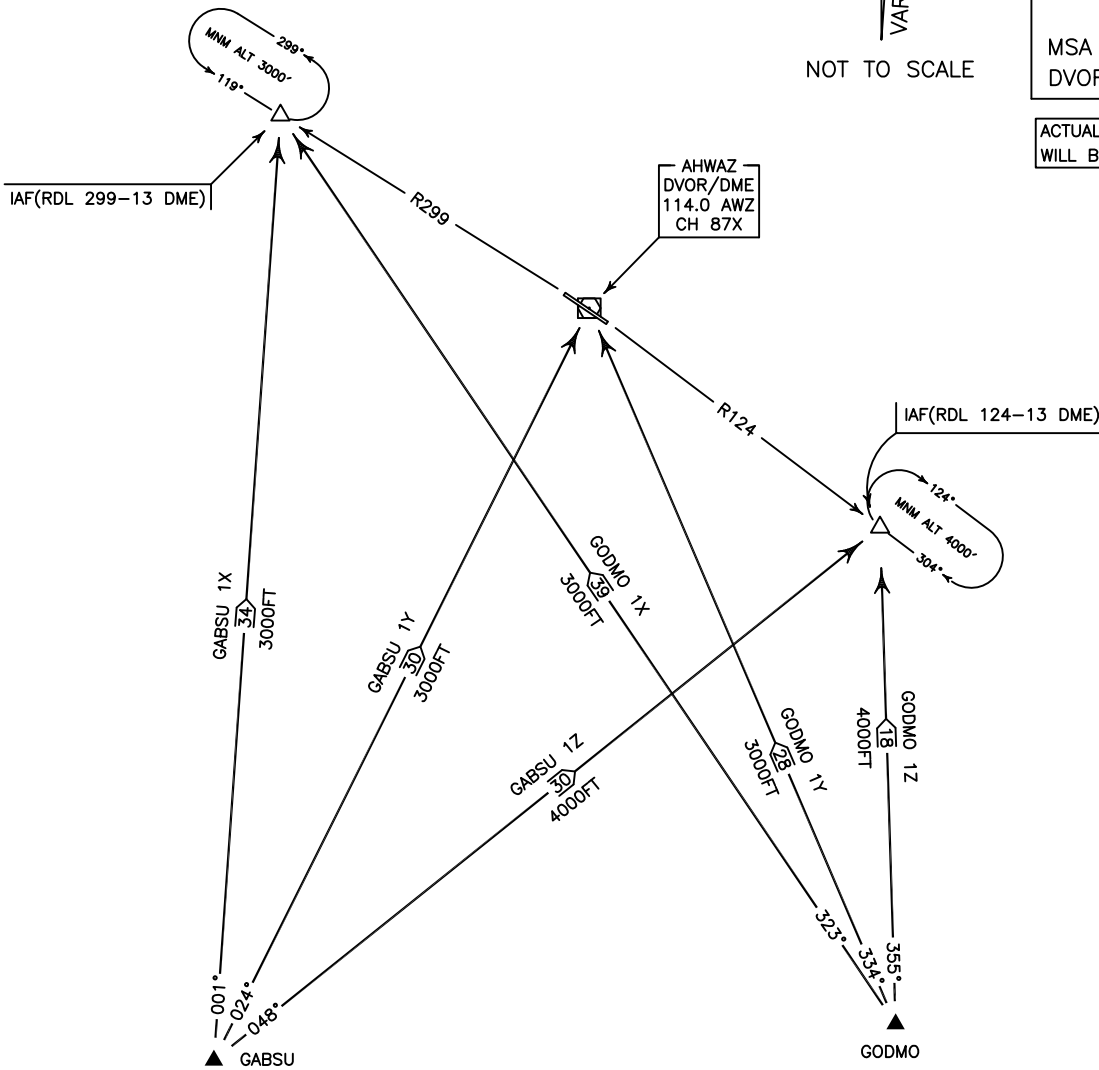
AHWAZ
RWY 12/30
GODMO 1X/1Y/1Z
GABSU 1X/1Y/1Z

ALL DIRECTIONS ARE MAGNETIC,
LEVEL AND ELEVATIONS ARE IN FEET,
DISTANCES ARE IN NAUTICAL MILES.

CTR and ATZ class "D".



ACTUAL DESCENT CLEARANCE
WILL BE AS DIRECTED BY ATC.



GODMO 1X ARR:

FM GODMO proceed to IAF (RDL 299-13 DME), MAG TR 323°, DIST 39 NM, MNM ALT 3000 FT.

GODMO 1Y ARR:

FM GODMO proceed to AWZ DVOR/DME, MAG TR 334°, DIST 28 NM, MNM ALT 3000 FT.

GODMO 1Z ARR:

FM GODMO proceed to IAF (RDL 124-13 DME), MAG TR 355°, DIST 18 NM, MNM ALT 4000 FT.

GABSU 1X ARR:

FM GABSU proceed to IAF (RDL 299-13 DME), MAG TR 001°, DIST 34 NM, MNM ALT 3000 FT.

GABSU 1Y ARR:

FM GABSU proceed to AWZ DVOR/DME, MAG TR 024°, DIST 30 NM, MNM ALT 3000 FT.

GABSU 1Z ARR:

FM GABSU proceed to IAF (RDL 124-13 DME), MAG TR 048°, DIST 30 NM, MNM ALT 4000 FT.