

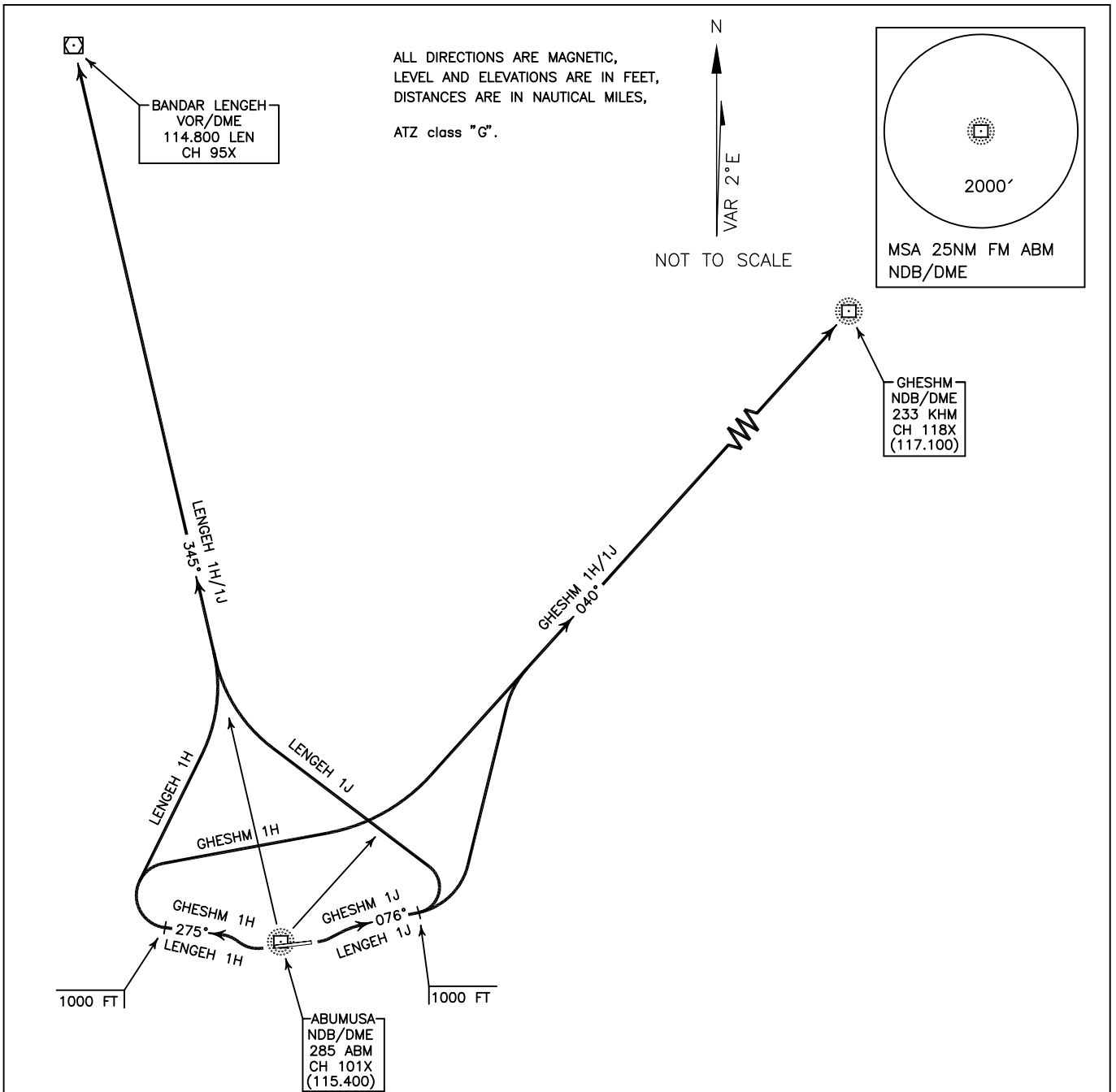
STANDARD DEPARTURE CHART-
INSTRUMENT (SID)-ICAO

TRANSITION ALTITUDE
4000 FT

TRANSITION LEVEL
FL 60

INFO 122.900
121.800

ABUMUSA ISLAND/ABUMUSA
RWY 08/26
GHESHM 1H/1J
LENGEH 1H/1J



GHESHM 1H DEP:

DEP RWY 26 - After take off climb on BRG 275° to 1000 FT, then turn right to establish BRG 040° FM ABM NDB/DME to KHM NDB/DME and climb to cleared level.
MNM ROC 305 FT/NM.

GHESHM 1J DEP:

DEP RWY 08 - After take off climb on BRG 076° to 1000 FT, then turn left to establish BRG 040° FM ABM NDB/DME to KHM NDB/DME and climb to cleared level.

LENGEH 1H DEP:

DEP RWY 26 - After take off climb on BRG 275° to 1000 FT, then turn right to establish BRG 345° FM ABM NDB/DME to LEN VOR/DME and climb to cleared level.
MNM ROC 305 FT/NM.

LENGEH 1J DEP:

DEP RWY 08 - After take off climb on BRG 076° to 1000 FT, then turn left to establish BRG 345° FM ABM NDB/DME to LEN VOR/DME and climb to cleared level.