

STANDARD DEPARTURE CHART-
INSTRUMENT (SID)-ICAO

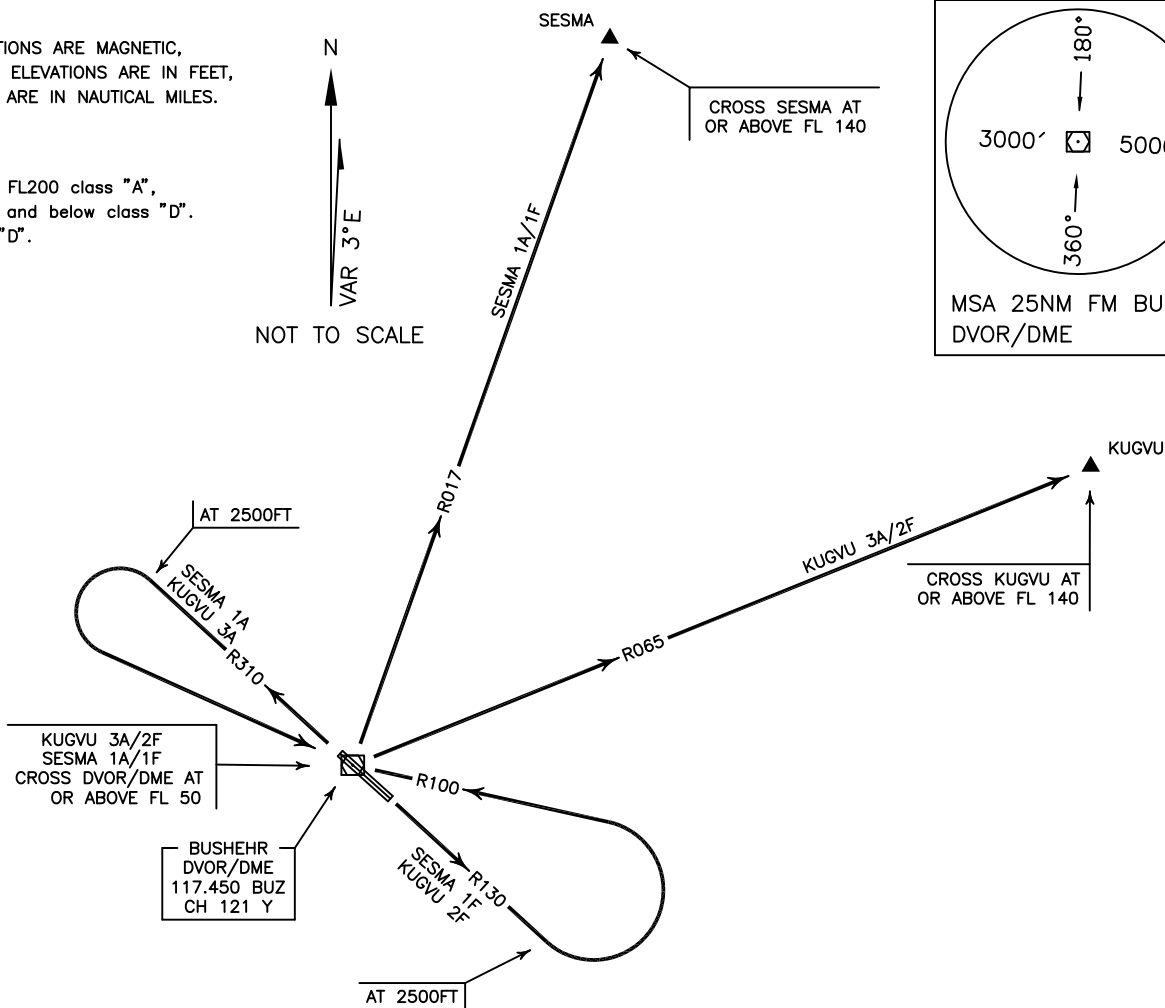
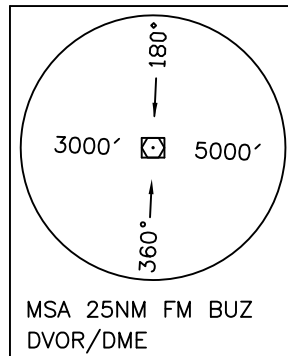
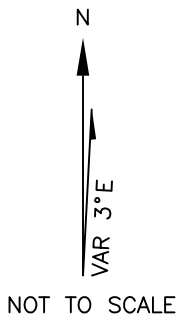
TRANSITION ALTITUDE
5000 FT

APP 119.700
TWR 122.500, 121.900
ATIS 126.200

BUSHEHR
RWY 31R/L, 13L/R
SESMA 1A/1F
KUGVU 3A/2F

ALL DIRECTIONS ARE MAGNETIC,
LEVEL AND ELEVATIONS ARE IN FEET,
DISTANCES ARE IN NAUTICAL MILES.

CTR above FL200 class "A",
at FL 200 and below class "D".
ATZ class "D".



SESMA 1A DEP:

DEP RWY 31R/L - After take off climb on RDL 310 to 2500FT, then turn left to cross overhead DVOR/DME at or above FL 50, then intercept RDL 017 to cross SESMA at or above FL140 and climb to cleared level.

SESMA 1F DEP:

DEP RWY 13L/R - After take off climb on RDL 130 to 2500FT, then turn left to intercept RDL 100 to cross overhead DVOR/DME at or above FL 50, then intercept RDL 017 to cross SESMA at or above FL140 and climb to cleared level.

KUGVU 3A DEP:

DEP RWY 31R/L - After take off climb on RDL 310 to 2500FT, turn left to cross overhead DVOR/DME at or above FL 50, then intercept RDL 065 to cross KUGVU at or above FL 140 and climb to cleared level.

NOTE: This procedure is unusable when OIB30 is active.

KUGVU 2F DEP:

DEP RWY 13L/R - After take off climb on RDL 130 to 2500FT, then turn left to intercept RDL 100 to cross overhead DVOR/DME at or above FL 50, then intercept RDL 065 to cross KUGVU at or above FL 140 and climb to cleared level.

NOTE: This procedure is unusable when OIB30 is active.