

STANDARD DEPARTURE CHART-
INSTRUMENT (SID)-ICAO

TRANSITION ALTITUDE
5000 FT

APP 119.700
TWR 122.500, 121.900
ATIS 126.200

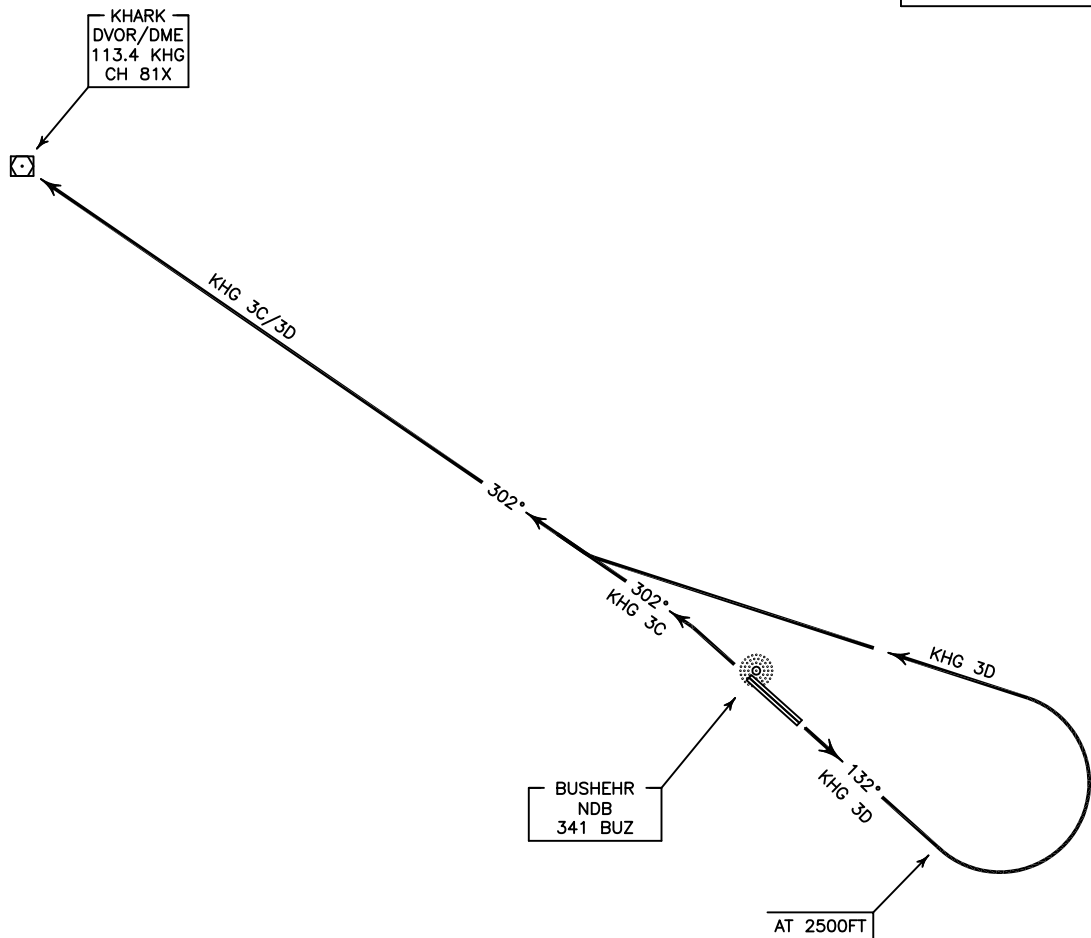
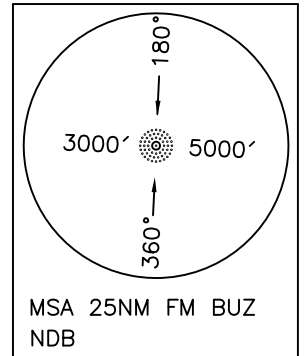
BUSHEHR
RWY 31R/L, 13L/R
KHG 3C/3D

ALL DIRECTIONS ARE MAGNETIC,
LEVEL AND ELEVATIONS ARE IN FEET,
DISTANCES ARE IN NAUTICAL MILES.

CTR above FL200 class "A",
at FL 200 and below class "D".
ATZ class "D".



NOT TO SCALE



KHG 3C DEP:

DEP RWY 31R/L - After take off turn left climb on BRG 302° to KHG DVOR/DME and climb to cleared level.

KHG 3D DEP:

DEP RWY 13L/R - After take off climb on BRG 132° to 2500 FT, then turn left intercept BRG 302° to KHG DVOR/DME and climb to cleared level.