

STANDARD ARRIVAL CHART-
INSTRUMENT (STAR)-ICAO

TRANSITION ALTITUDE
5000 FT

APP 119.700
TWR 122.500, 121.900
ATIS 126.200

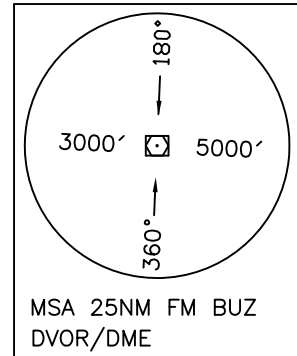
BUSHEHR
RWY 31R/L, 13L/R
KUGVU 1N/1P
VATOB 1N/1Q

ALL DIRECTIONS ARE MAGNETIC,
LEVEL AND ELEVATIONS ARE IN FEET,
DISTANCES ARE IN NAUTICAL MILES.

CTR above FL200 class "A",
at FL 200 and below class "D".
ATZ class "D".



NOT TO SCALE

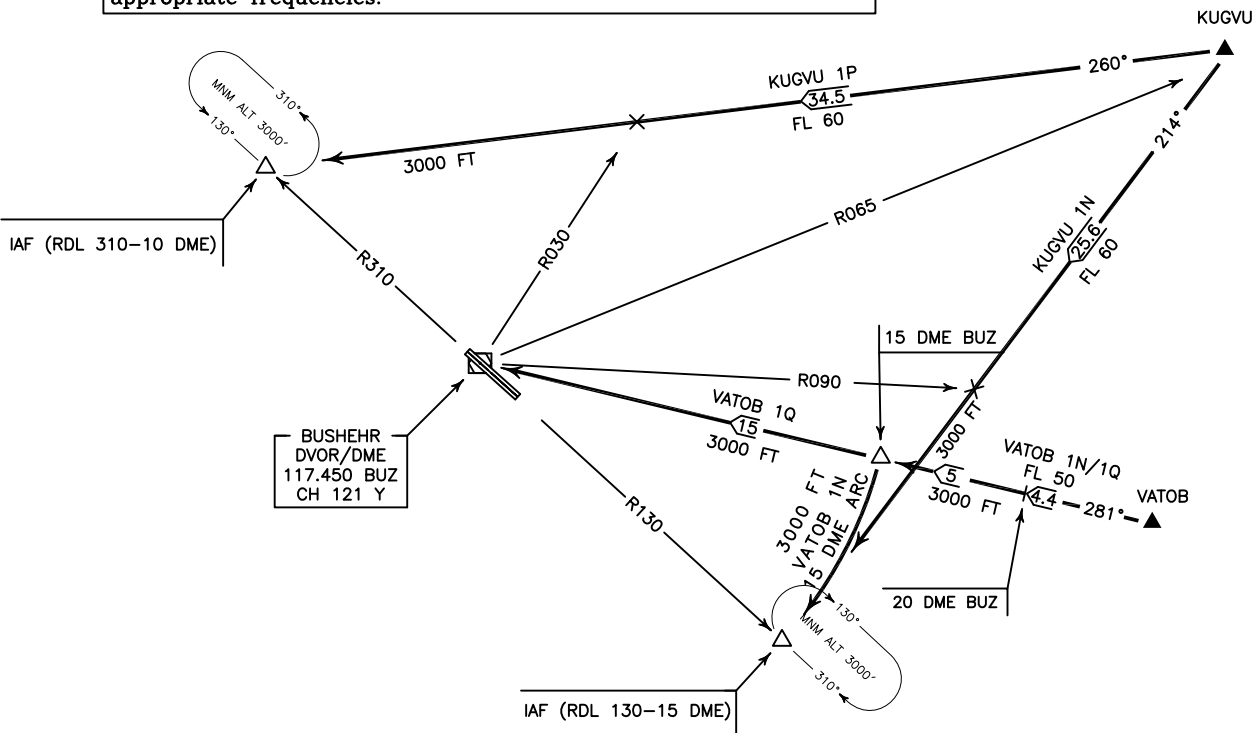


MSA 25NM FM BUZ
DVOR/DME

NOTE:

ALL inbound traffic are required to contact with Bushehr Radar on 127.800 or 135.100 MHz before 50 NM to Bushehr for military identification then contact with Bushehr approach and tower on appropriate frequencies.

ACTUAL DESCENT CLEARANCE
WILL BE AS DIRECTED BY ATC.



KUGVU 1N ARR:

FM KUGVU proceed to IAF (RDL 130-15 DME), MAG TR 214°, DIST 25.6 NM, MNM level up to crossing RDL 090 FL 60, then 3000 FT.

KUGVU 1P ARR:

FM KUGVU proceed to IAF (RDL 310-10 DME), MAG TR 260°, DIST 34.5 NM, MNM level up to crossing RDL 030 FL 60, then 3000 FT.

NOTE: This procedure is unusable when OID30 is active.

VATOB 1N ARR:

FM VATOB proceed to IAF (RDL 130-15 DME), MAG TR 281°, DIST 9.4 NM, at 15 DME turn left to maintain 15 DME arc to IAF, MNM level up to 20 DME FL 50, then 3000 FT.

VATOB 1Q ARR:

FM VATOB proceed to BUZ DVOR/DME, MAG TR 281°, DIST 24.4 NM, MNM level up to 20 DME FL 50, then 3000 FT.