

STANDARD ARRIVAL CHART-
INSTRUMENT (STAR)-ICAO

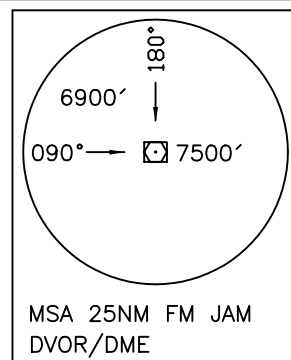
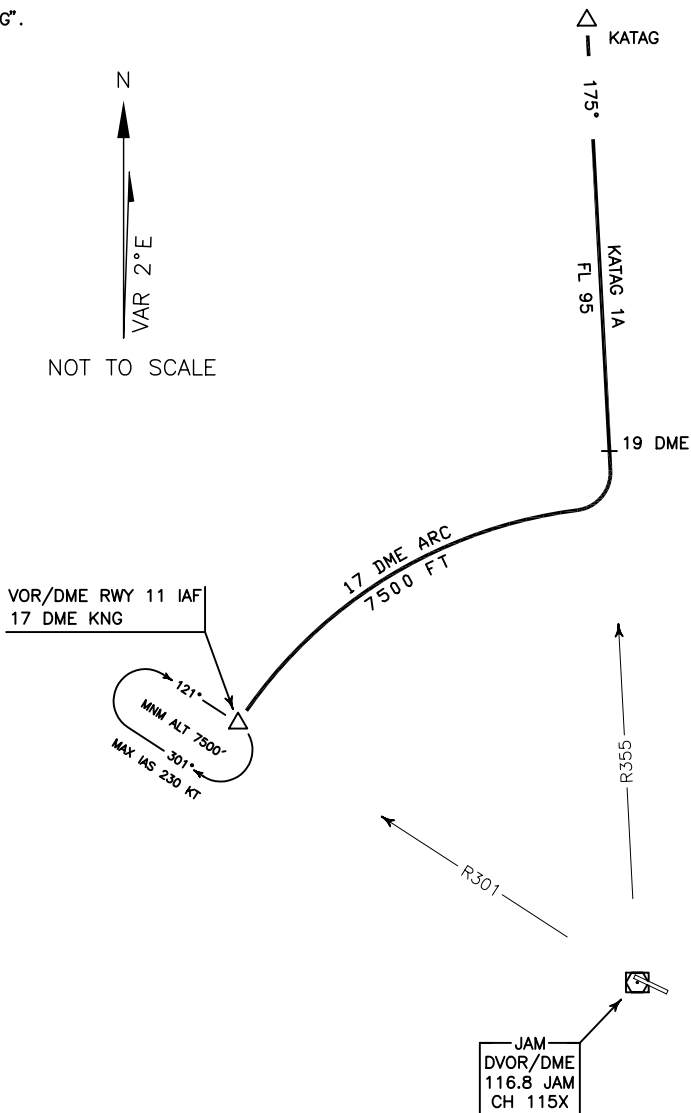
| |
|--------------------------------|
| TRANSITION ALTITUDE 8000 FT |
| TRANSITION LEVEL FL 100 |

| |
|-------------------------|
| INFO 124.350 121.650 |
|-------------------------|

JAM/JAM
RWY 11
KATAG 1A

ALL DIRECTIONS ARE MAGNETIC,
LEVEL AND ELEVATIONS ARE IN FEET,
DISTANCES ARE IN NAUTICAL MILES.

ATZ class "G".



KATAG 1A ARR:

FM KATAG proceed to VOR/DME RWY 11 IAF (RDL 301-17 DME), MAG TR 175°, at 19 DME turn right to establish 17 DME arc to IAF, MNM LEVEL FL 95 up to 19 DME, then MNM ALT 7500 FT.