

STANDARD ARRIVAL CHART—
INSTRUMENT (STAR)—ICAO

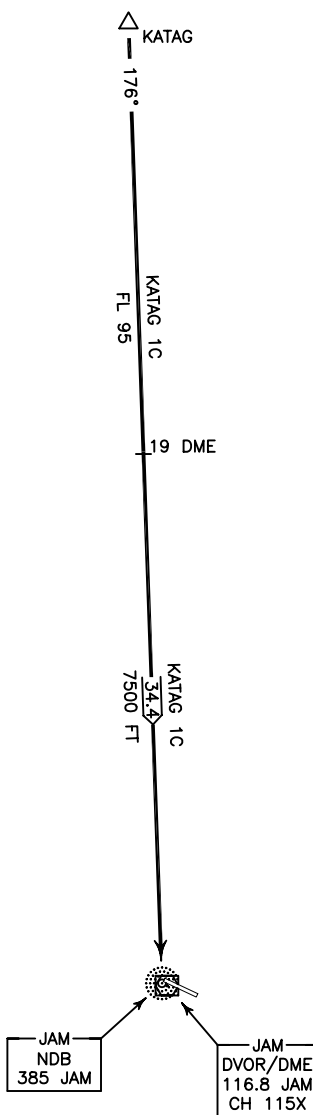
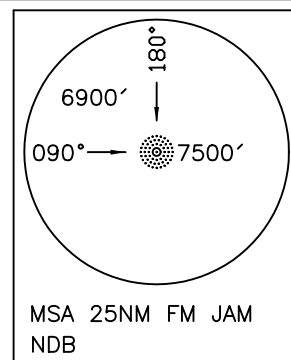
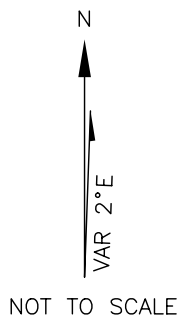
| |
|--------------------------------|
| TRANSITION ALTITUDE 8000 FT |
| TRANSITION LEVEL FL 100 |

| |
|--------------|
| INFO 124.350 |
| 121.650 |

JAM/JAM
RWY 11/29
KATAG 1C

ALL DIRECTIONS ARE MAGNETIC,
LEVEL AND ELEVATIONS ARE IN FEET,
DISTANCES ARE IN NAUTICAL MILES.

ATZ class "G".



KATAG 1C ARR:

FM KATAG proceed to JAM NDB, MAG TR 176°, DIST 34.4 NM FM DVOR/DME, MNM level FL 95 up to 19 DME FM DVOR/DME, then MNM ALT 7500 FT.