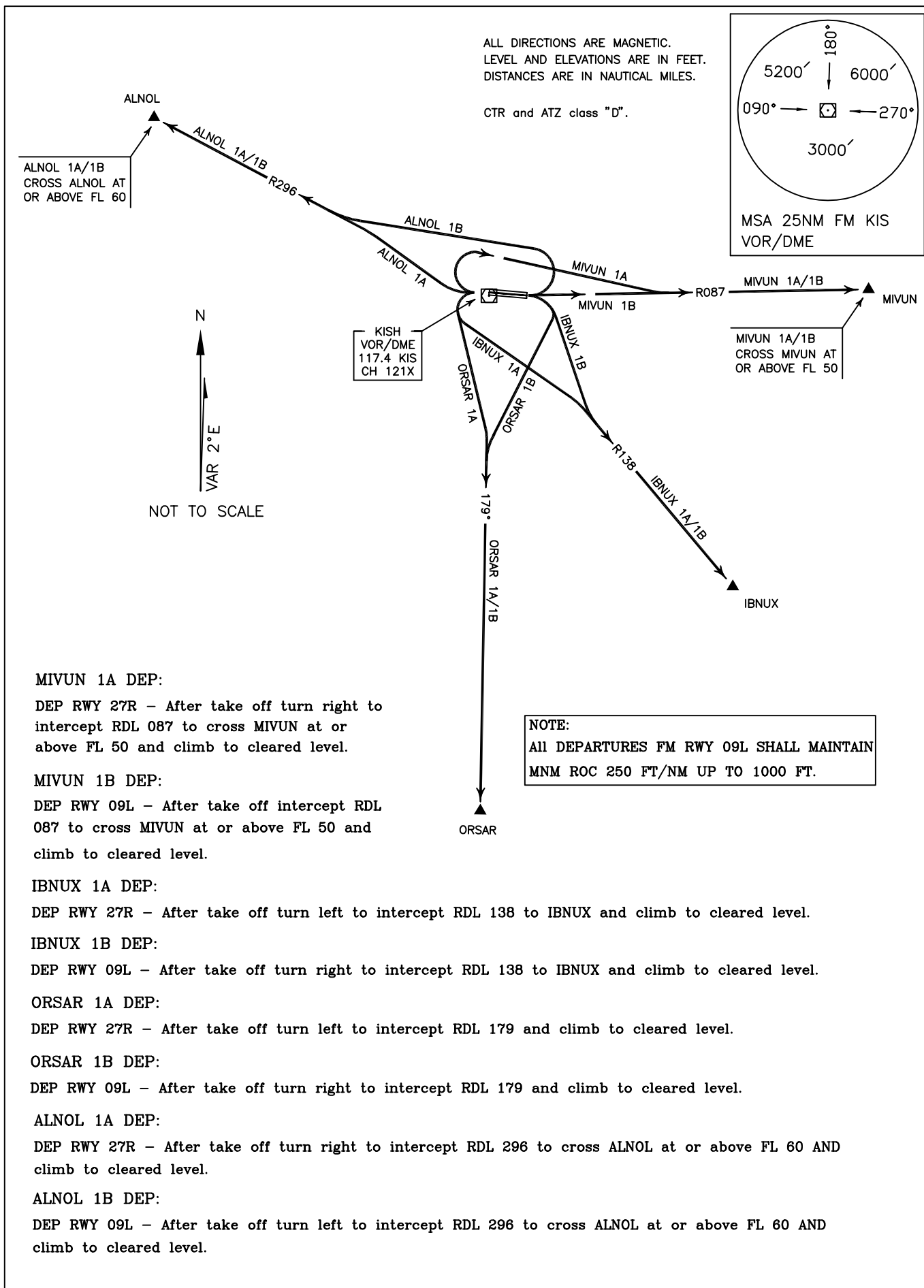


STANDARD DEPARTURE CHART-
INSTRUMENT (SID)-ICAO

TRANSITION ALTITUDE
3000 FT

TWR 118.450, 119.600
121.675
ATIS 128.000

KISH ISLAND/KISH
RWY 27R, 09L
MIVUN 1A/1B, IBNUX 1A/1B
ORSAR 1A/1B, ALNOL 1A/1B



MIVUN 1A DEP:

DEP RWY 27R - After take off turn right to intercept RDL 087 to cross MIVUN at or above FL 50 and climb to cleared level.

MIVUN 1B DEP:

DEP RWY 09L - After take off intercept RDL 087 to cross MIVUN at or above FL 50 and climb to cleared level.

IBNUX 1A DEP:

DEP RWY 27R - After take off turn left to intercept RDL 138 to IBNUX and climb to cleared level.

IBNUX 1B DEP:

DEP RWY 09L - After take off turn right to intercept RDL 138 to IBNUX and climb to cleared level.

ORSAR 1A DEP:

DEP RWY 27R - After take off turn left to intercept RDL 179 and climb to cleared level.

ORSAR 1B DEP:

DEP RWY 09L - After take off turn right to intercept RDL 179 and climb to cleared level.

ALNOL 1A DEP:

DEP RWY 27R - After take off turn right to intercept RDL 296 to cross ALNOL at or above FL 60 AND climb to cleared level.

ALNOL 1B DEP:

DEP RWY 09L - After take off turn left to intercept RDL 296 to cross ALNOL at or above FL 60 AND climb to cleared level.