

STANDARD ARRIVAL CHART-
INSTRUMENT (STAR)-ICAO

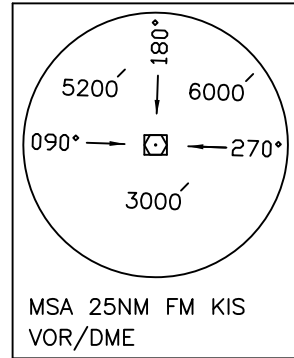
TRANSITION ALTITUDE
3000 FT

TWR 118.450, 119.600
121.675
ATIS 128.000

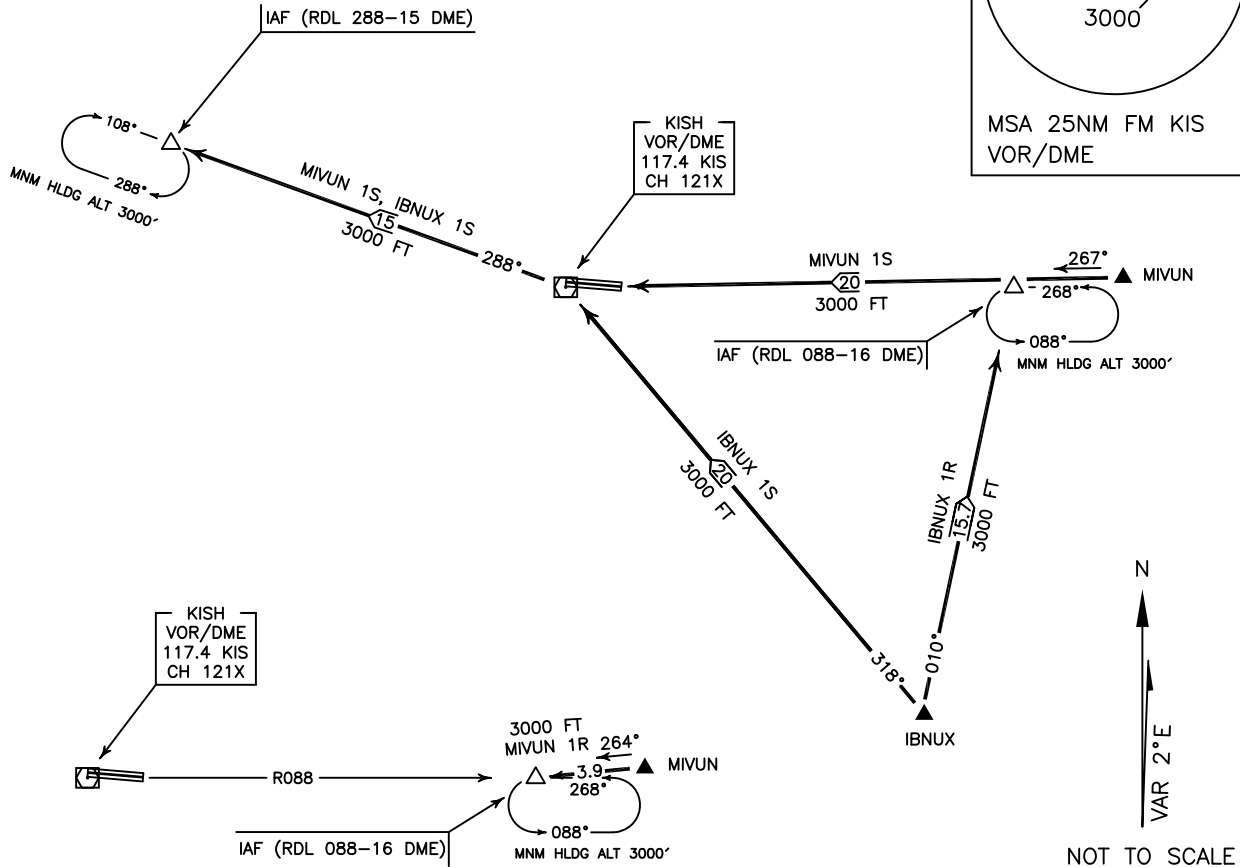
KISH ISLAND/KISH
RWY 27R, 09L
MIVUN 1R/1S
IBNUX 1R/1S

ALL DIRECTIONS ARE MAGNETIC.
LEVEL AND ELEVATIONS ARE IN FEET.
DISTANCES ARE IN NAUTICAL MILES.

ACTUAL DESCENT CLEARANCE
WILL BE AS DIRECTED BY ATC.



CTR and ATZ class "D".



MIVUN 1R ARR:

FM MIVUN proceed to IAF (RDL 088-16 DME), MAG TR 264°, DIST 3.9 NM, MNM ALT 3000 FT.

MIVUN 1S ARR:

FM MIVUN proceed to IAF (RDL 288-15 DME), via overhead KIS VOR/DME, MAG TR 267° up to overhead, DIST 20 NM, then MAG TR 288° to IAF, DIST 15 NM, MNM ALT 3000 FT.

IBNUX 1R ARR:

FM IBNUX proceed to IAF (RDL 088-16 DME), MAG TR 010°, DIST 15.7 NM, MNM ALT 3000 FT.

IBNUX 1S ARR:

FM IBNUX proceed to IAF (RDL 288-15 DME), via overhead KIS VOR/DME, MAG TR 318° up to overhead, DIST 20 NM, then MAG TR 288° to IAF, DIST 15 NM, MNM ALT 3000 FT.