

STANDARD ARRIVAL CHART-  
INSTRUMENT (STAR)-ICAO

TRANSITION ALTITUDE  
3000 FT

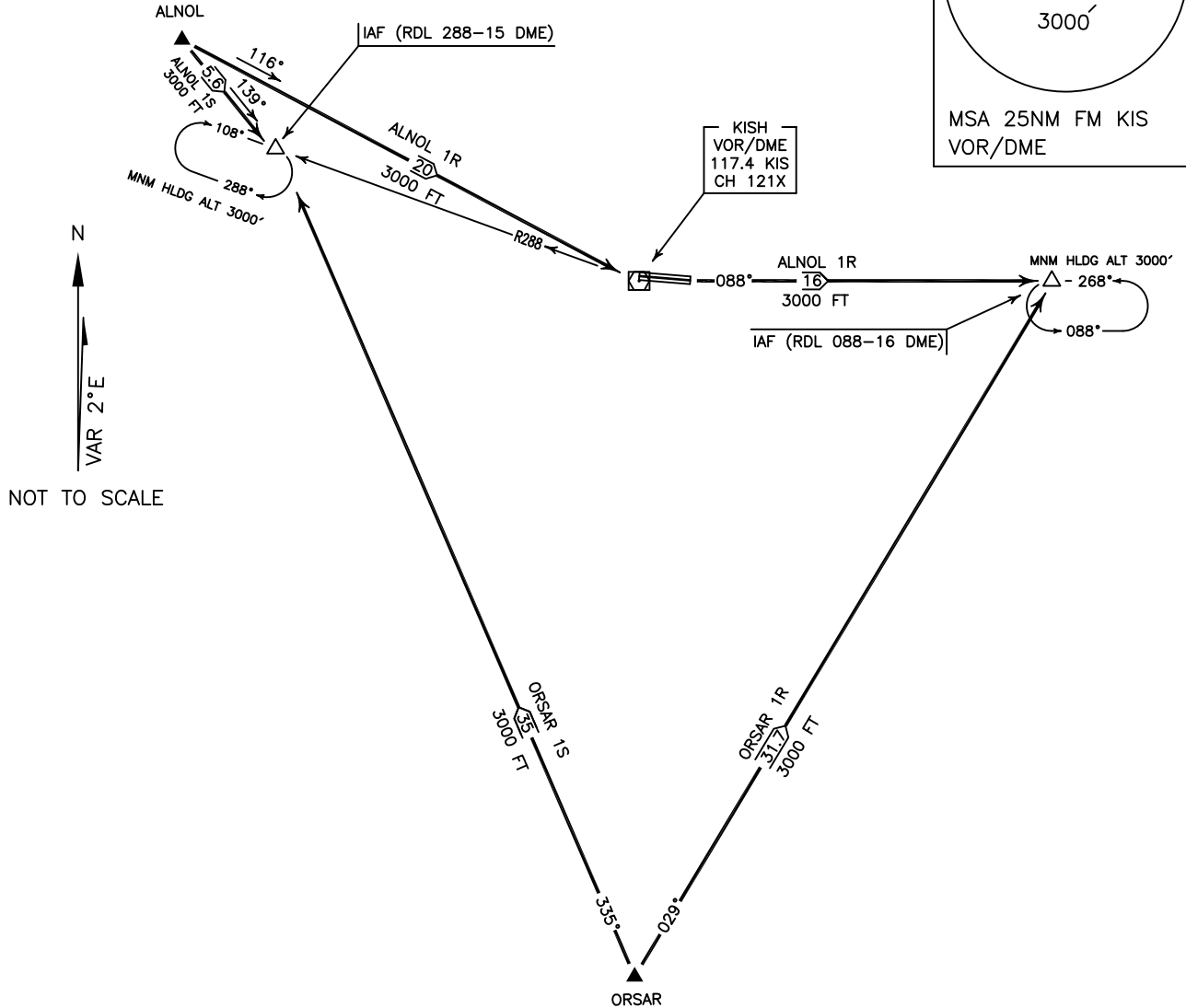
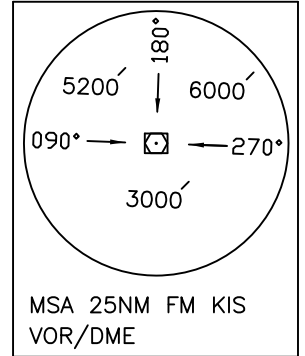
TWR 118.450, 119.600  
121.675  
ATIS 128.000

KISH ISLAND/KISH  
RWY 27R, 09L  
ORSAR 1R/1S  
ALNOL 1R/1S

ACTUAL DESCENT CLEARANCE  
WILL BE AS DIRECTED BY ATC.

ALL DIRECTIONS ARE MAGNETIC.  
LEVEL AND ELEVATIONS ARE IN FEET.  
DISTANCES ARE IN NAUTICAL MILES.

CTR and ATZ class "D".



**ORSAR 1R ARR:**

FM ORSAR proceed to IAF (RDL 088-16 DME), MAG TR 029°, DIST 31.7 NM, MNM ALT 3000 FT.

**ORSAR 1S ARR:**

FM ORSAR proceed to IAF (RDL 288-15 DME), MAG TR 335°, DIST 35 NM, MNM ALT 3000 FT.

**ALNOL 1R ARR:**

FM ALNOL proceed to IAF (RDL 088-16 DME), via overhead KIS VOR/DME, MAG TR 116° up to overhead, DIST 20 NM, then MAG TR 088° to IAF, DIST 16 NM, MNM ALT 3000 FT.

**ALNOL 1S ARR:**

FM ALNOL proceed to IAF (RDL 288-15 DME), MAG TR 139°, DIST 5.6 NM, MNM ALT 3000 FT.