

STANDARD ARRIVAL CHART-  
INSTRUMENT (STAR)-ICAO

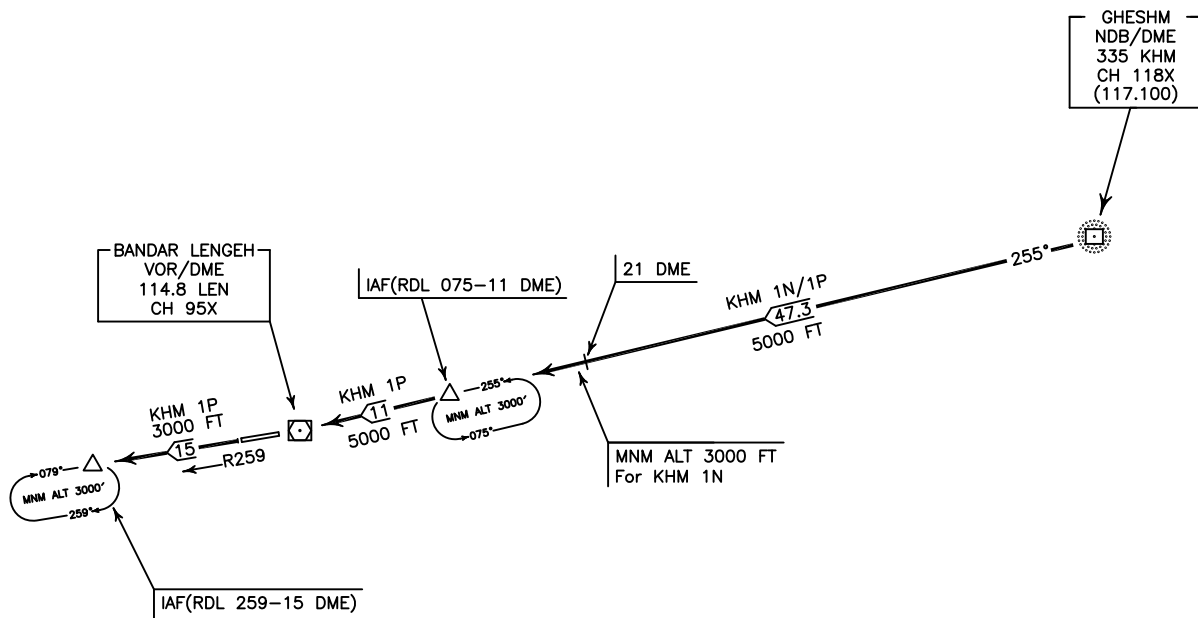
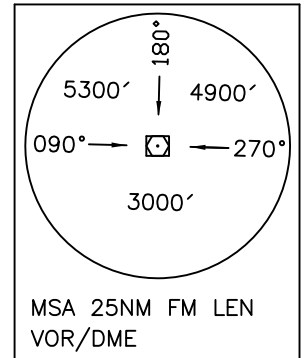
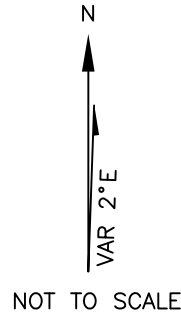
TRANSITION LEVEL FL 60
TRANSITION ALTITUDE 4000 FT

AFIS 122.550
121.700

BANDAR LENGEH  
RWY 08/26  
KHM 1N/1P

ALL DIRECTIONS ARE MAGNETIC,  
LEVEL AND ELEVATIONS ARE IN FEET,  
DISTANCES ARE IN NAUTICAL MILES.

ATZ class "G".



**KHM 1N ARR:**

FM KHM NDB/DME proceed to IAF (RDL 075-11 DME), MAG TR 255°, DIST 47.3 NM, MNM ALT 5000 FT up to 21 DME then MNM ALT 3000 FT.

**KHM 1P ARR:**

FM KHM NDB/DME proceed to IAF (RDL 259-15 DME) via overhead LEN VOR/DME, MAG TR 255°, DIST 58.3 NM, then proceed on RDL 259 to IAF, DIST 15 NM, MNM ALT 5000 FT up to overhead then MNM ALT 3000 FT.