

STANDARD ARRIVAL CHART-  
INSTRUMENT (STAR)-ICAO

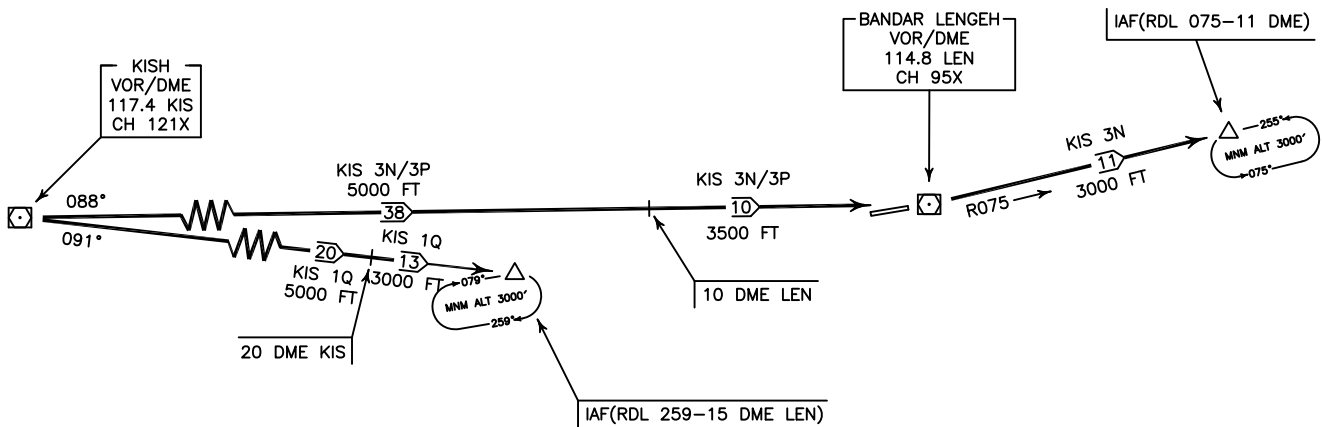
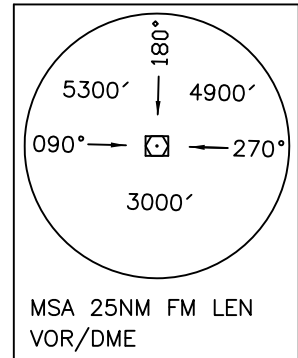
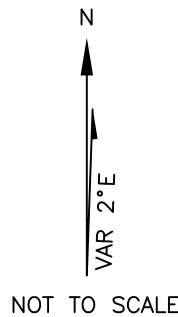
TRANSITION LEVEL FL 60
TRANSITION ALTITUDE 4000 FT

AFIS 122.550 121.700
-------------------------

BANDAR LENGEH  
RWY 08/26  
KIS 3N/3P/1Q

ALL DIRECTIONS ARE MAGNETIC,  
LEVEL AND ELEVATIONS ARE IN FEET,  
DISTANCES ARE IN NAUTICAL MILES.

ATZ class "C".



**KIS 3N ARR:**

FM KIS VOR/DME proceed to IAF (RDL 075-11 DME) via overhead LEN VOR/DME, MAG TR 088°, DIST 48 NM, MNM ALT 5000 FT up to 10 DME then MNM ALT 3500 FT, then proceed on RDL 075 to IAF, DIST 11 NM, MNM ALT 3000 FT.

**KIS 3P ARR:**

FM KIS VOR/DME proceed to LEN VOR/DME, MAG TR 088°, DIST 48 NM, MNM ALT 5000 FT up to 10 DME LEN, then MNM ALT 3500 FT.

**KIS 1Q ARR:**

FM KIS VOR/DME proceed to IAF (RDL 259-15 DME LEN), MAG TR 091°, DIST 33 NM, MNM ALT 5000 FT up to 20 DME KIS, then MNM ALT 3000 FT.