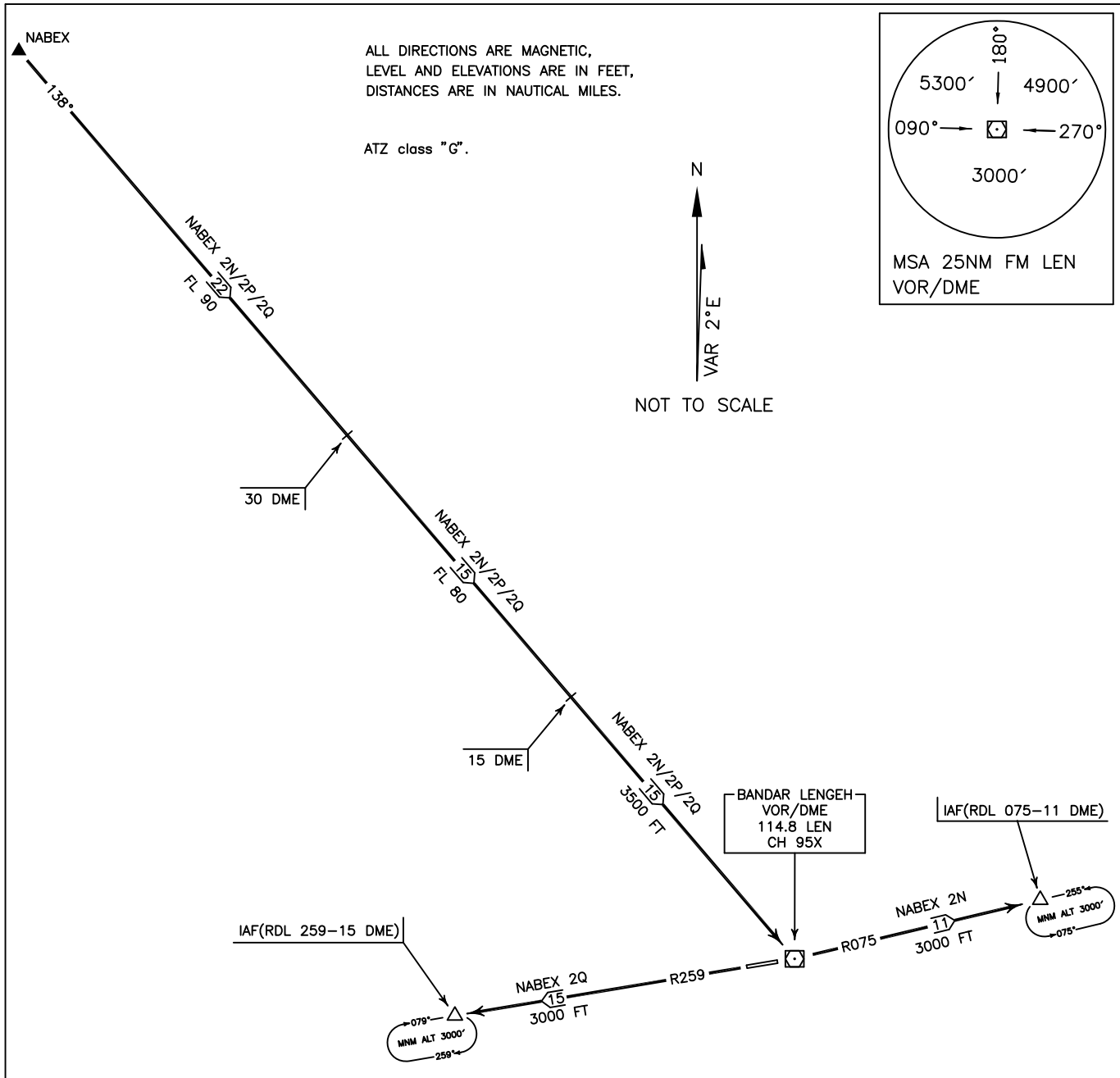


STANDARD ARRIVAL CHART-
INSTRUMENT (STAR)-ICAO

TRANSITION LEVEL FL 60
TRANSITION ALTITUDE 4000 FT

AFIS 122.550 121.700

BANDAR LENGEH
RWY 08/26
NABEX 2N/2P/2Q



NABEX 2N ARR:

FM NABEX proceed to IAF (RDL 075-11 DME), via overhead LEN VOR/DME, MAG TR 138°, DIST 52 NM, then proceed on RDL 075 to IAF, DIST 11 NM, MNM FL 90 up to 30 DME, then MNM FL 80 up to 15 DME, then MNM ALT 3500 FT up to overhead LEN VOR/DME, then MNM 3000 FT.

NABEX 2P ARR:

FM NABEX proceed to LEN VOR/DME, MAG TR 138°, DIST 52 NM, MNM FL 90 up to 30 DME, then MNM FL 80 up to 15 DME, then MNM ALT 3500 FT.

NABEX 2Q ARR:

FM NABEX proceed to IAF (RDL 259-15 DME), via overhead LEN VOR/DME, MAG TR 138°, DIST 52 NM, then proceed on RDL 259 to IAF, DIST 15 NM, MNM FL 90 up to 30 DME, then MNM FL 80 up to 15 DME, then MNM ALT 3500 FT up to overhead LEN VOR/DME, then MNM 3000 FT.