

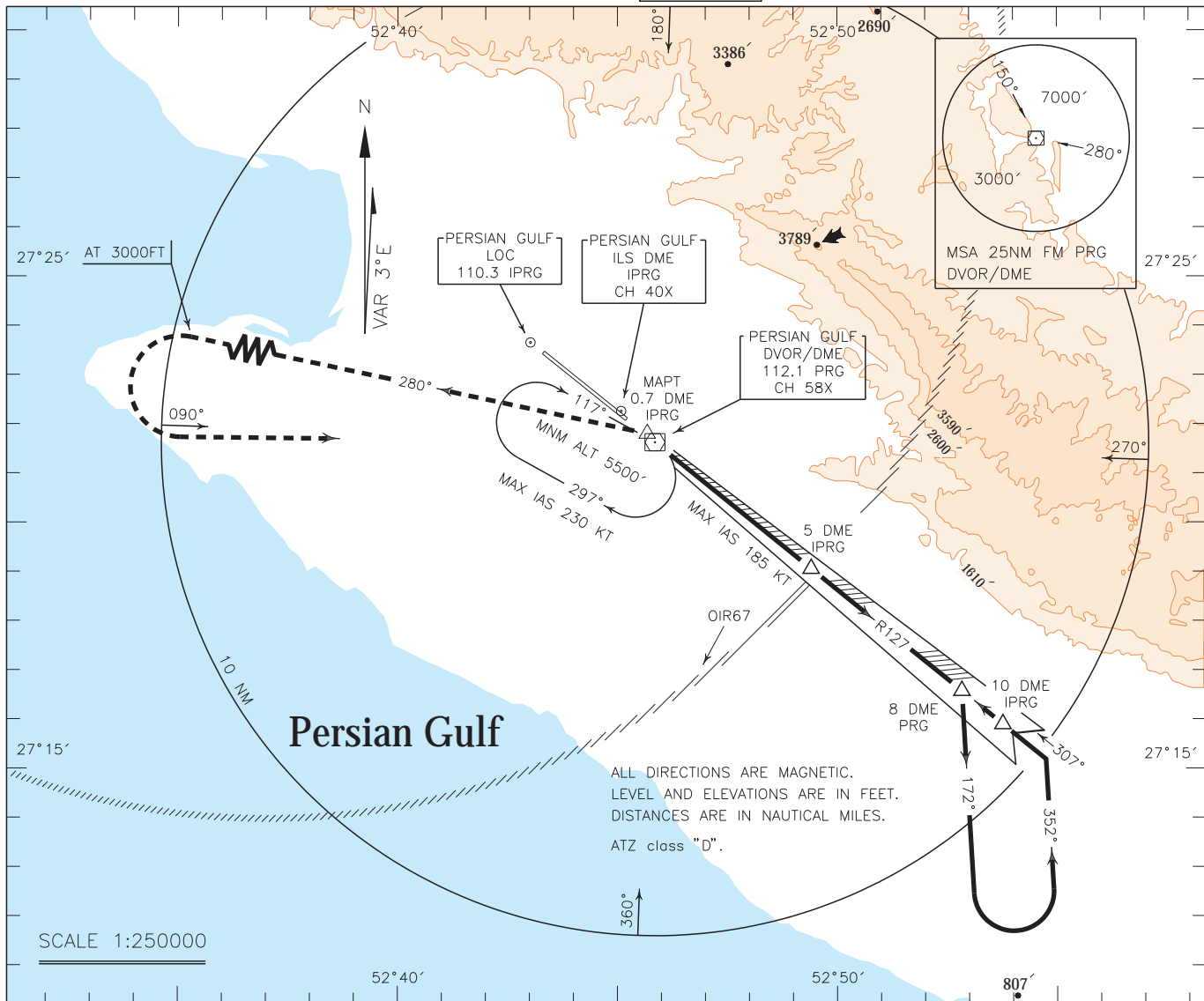
PARS SPECIAL ENERGY ECONOMY ZONE/PERSIAN GULF

INSTRUMENT
APPROACH
CHART-ICAO

AERODROME ELEV. 22 FT
HEIGHTS RELATED TO
THR RWY 31 ELEV. 22 FT

TWR 118.125
121.725
ATIS 126.600

ILS Y RWY 31
CAT A/B/C/D

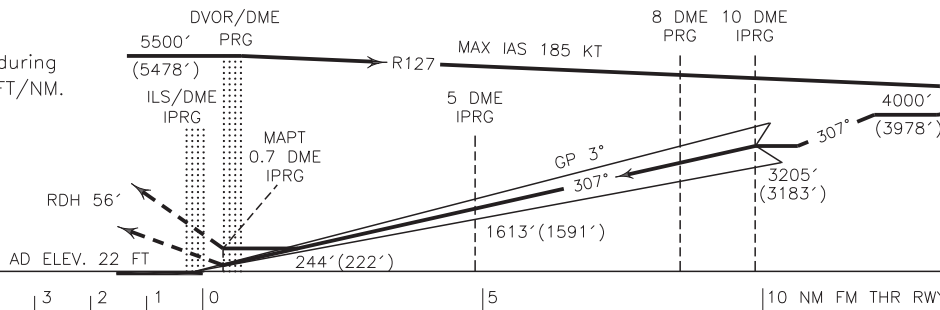


MISSED APPROACH: At 0.7 DME IPRG climbing turn left on TR 280° to 3000 FT, then turn left to rejoin HLDG at 5500 FT.

TA 7000'

Note:

MNM Rate of climb during missed APCH 220 FT/NM.



OCA(H)	A	B	C	D
Straight		244' (222')		
GP INOP		600' (578')		
Circling		720' (698')		

NOTE:

- 1-Circling not authorized north of AD.
- 2-Contour intervals are to be selected at 990 FT (300 M).