

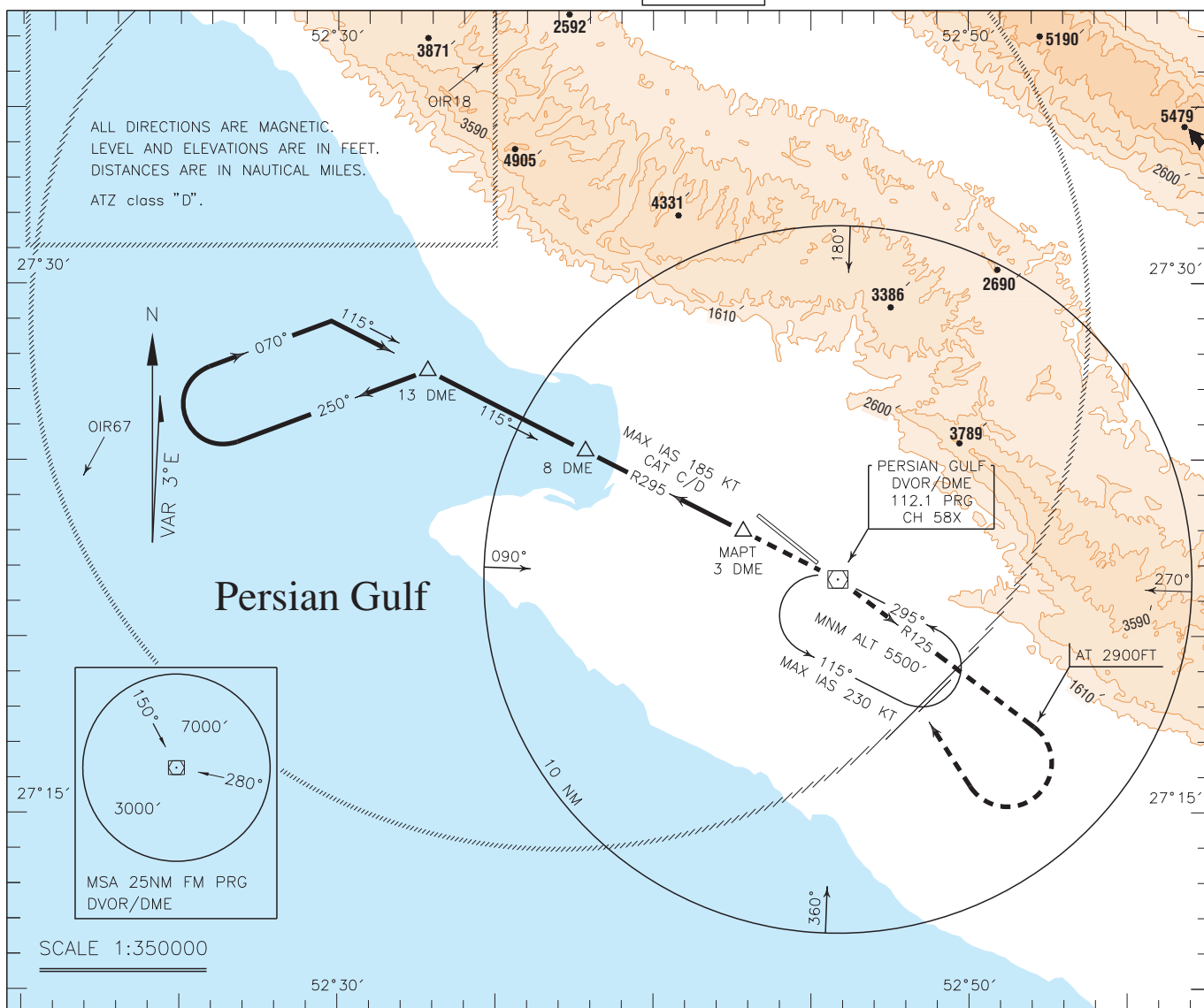
PARS SPECIAL ENERGY ECONOMY ZONE/PERSIAN GULF

INSTRUMENT
APPROACH
CHART-ICAO

AERODROME ELEV. 22 FT
HEIGHTS RELATED TO
AERODROME ELEVATION

TWR 118.125
121.725
ATIS 126.600

CIRCLING VOR/DME 2
CAT A/B/C/D

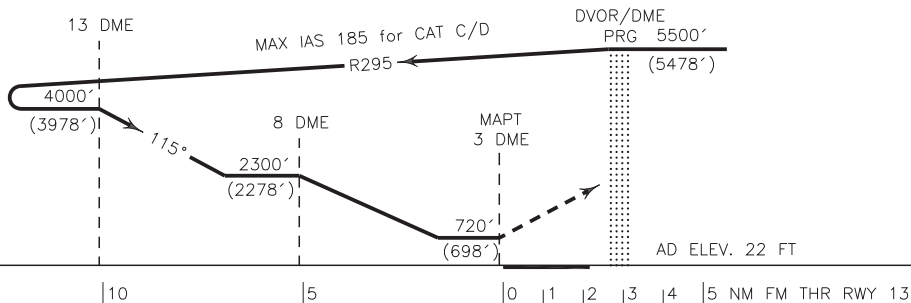


MISSED APPROACH: At 3 DME climb to overhead DVOR/DME, then turn right to intercept RDL 125 climbing to 2900 FT, then turn right to rejoin HLDG at 5500 FT.

TA 7000'

Note:

MNM Rate of climb during missed APCH 220 FT/NM.



NOTE:

- 1-Circling not authorized north of AD.
- 2-Contour intervals are to be selected at 990 FT (300 M).

OCA(H)	A	B	C	D
Straight				
Circling		720' (698')		