

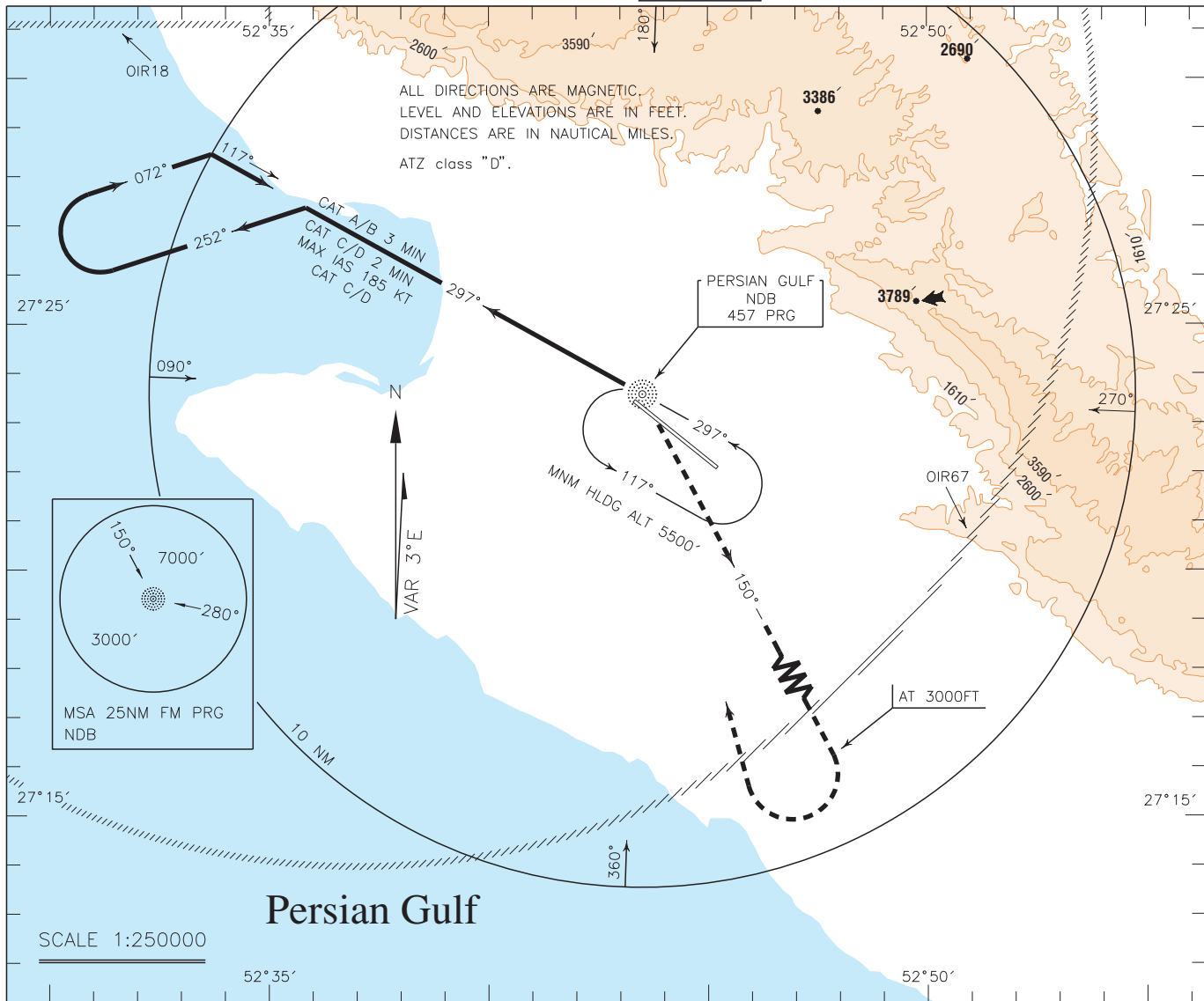
PARS SPECIAL ENERGY ECONOMY ZONE/PERSIAN GULF

INSTRUMENT  
APPROACH  
CHART-ICAO

AERODROME ELEV. 22 FT  
HEIGHTS RELATED TO  
THR RWY 13 ELEV. 12 FT

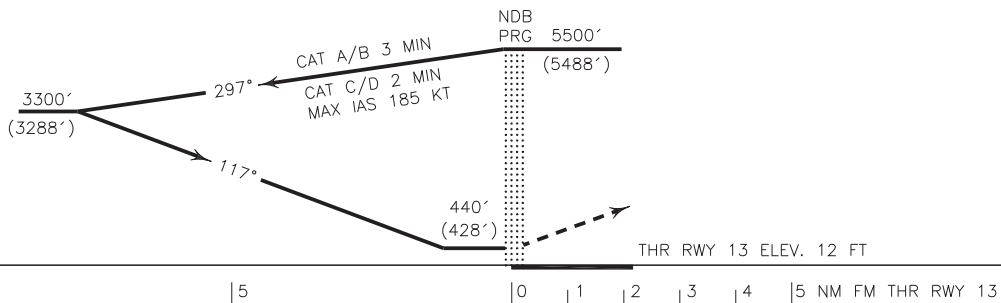
TWR 118.125  
121.725  
ATIS 126.600

NDB RWY 13  
CAT A/B/C/D



MISSED APPROACH: Over PRG NDB turn right climb on TR 150° to 3000 FT, then turn right to rejoin holding at 5500 FT.

TA 7000'



NOTE:

- 1-Circling not authorized north of AD.
- 2-Contour intervals are to be selected at 990 FT (300 M).

OCA(H)	A	B	C	D
Straight		440' (428')		
Circling		720' (698')		