

STANDARD DEPARTURE CHART-
INSTRUMENT (SID)-ICAO

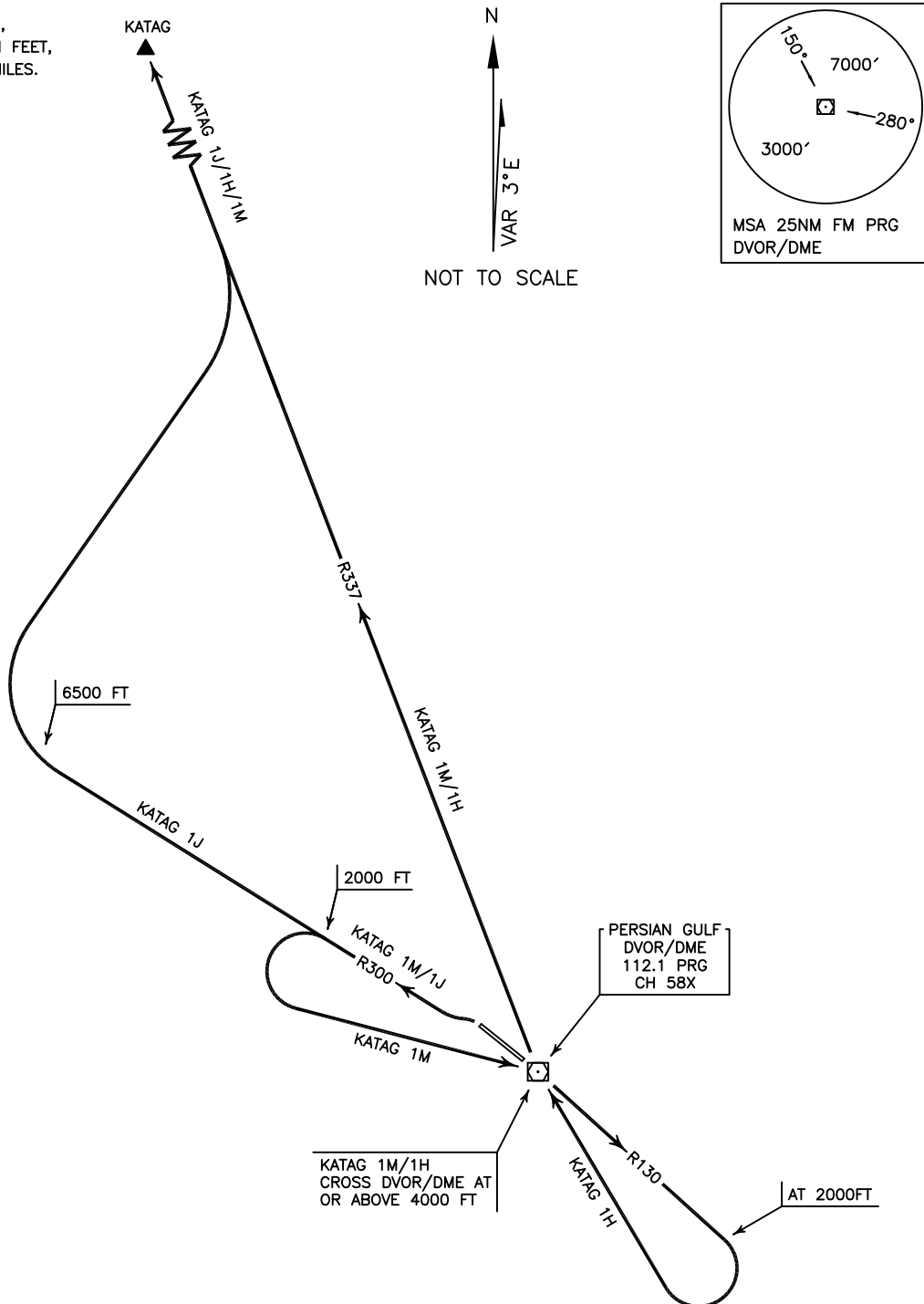
PARS SPECIAL ENERGY ECONOMY ZONE/PERSIAN GULF

TRANSITION ALTITUDE
7000 FT

TWR 118.125
121.725
ATIS 126.600

RWY 13/31
KATAG 1H/1J/1M

ALL DIRECTIONS ARE MAGNETIC,
LEVEL AND ELEVATIONS ARE IN FEET,
DISTANCES ARE IN NAUTICAL MILES.
ATZ class "D".



KATAG 1H DEP:

DEP RWY 13 - After take off climb on RDL 130 to 2000 FT, then turn right to cross overhead PRG DVOR/DME at or above 4000 FT, then intercept RDL 337 to KATAG and climb to cleared level.

KATAG 1J DEP:

DEP RWY 31 - After take off climb on RDL 300 to 6500 FT, then turn right to intercept RDL 337 to KATAG and climb to cleared level.
MNM rate of climb 320 FT/NM.

KATAG 1M DEP:

DEP RWY 31 - After take off climb on RDL 300 to 2000 FT, then turn left to cross overhead PRG DVOR/DME at or above 4000 FT, then turn left to intercept RDL 337 to KATAG and climb to cleared level.