

STANDARD DEPARTURE CHART-  
INSTRUMENT (SID)-ICAO

PARS SPECIAL ENERGY ECONOMY ZONE/PERSIAN GULF

TRANSITION ALTITUDE  
7000 FT

TWR 118.125  
121.725  
ATIS 126.600

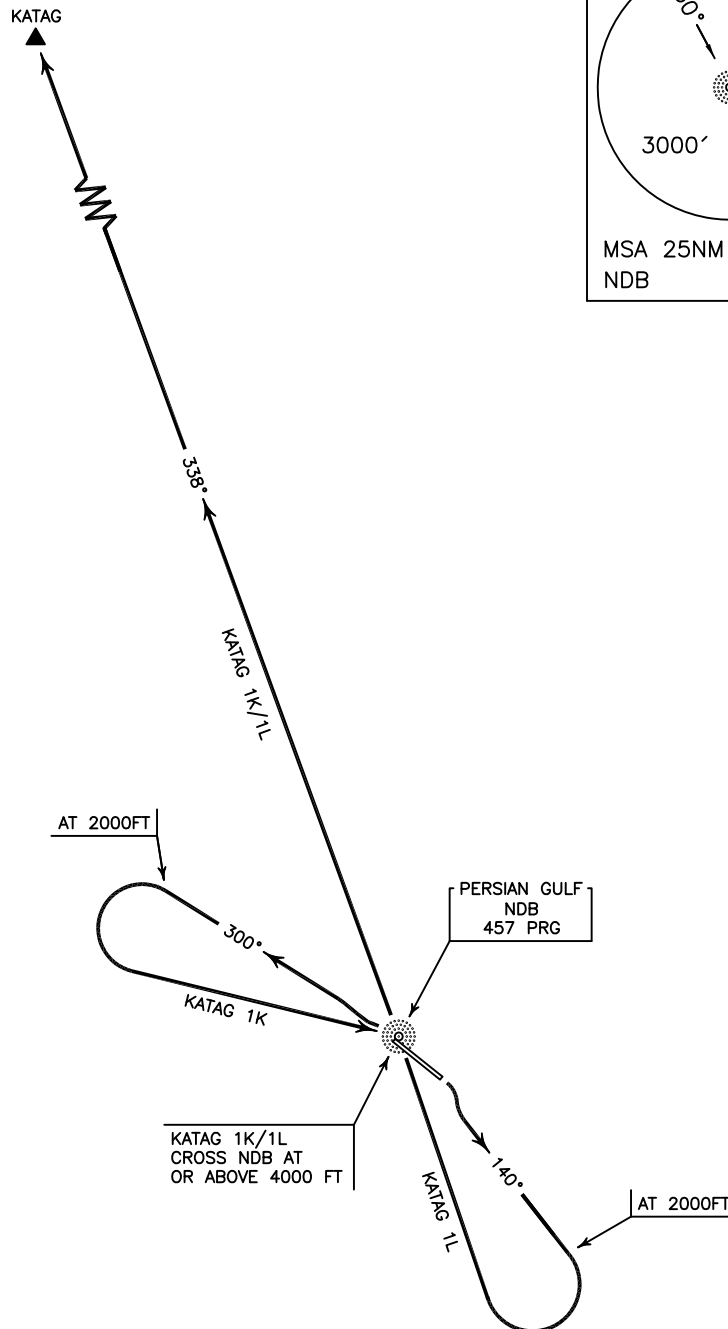
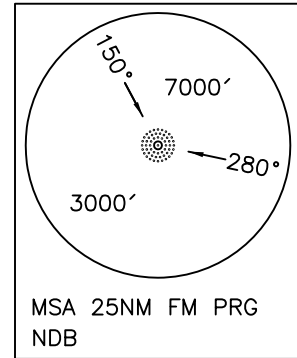
RWY 13/31  
KATAG 1K/1L

ALL DIRECTIONS ARE MAGNETIC,  
LEVEL AND ELEVATIONS ARE IN FEET,  
DISTANCES ARE IN NAUTICAL MILES.

ATZ class "D".



NOT TO SCALE



**KATAG 1K DEP:**

DEP RWY 31 - After take off turn left climb on BRG 300° MAG FM PRG NDB to 2000 FT, then turn left to cross overhead PRG NDB at or above 4000 FT, then turn left proceed on BRG 338° MAG to KATAG and climb to cleared level.

**KATAG 1L DEP:**

DEP RWY 13 - After take off turn right climb on BRG 140° MAG FM PRG NDB to 2000 FT, then turn right to cross overhead PRG NDB at or above 4000 FT, then turn left proceed on BRG 338° MAG to KATAG and climb to cleared level.