

STANDARD ARRIVAL CHART-
INSTRUMENT (STAR)-ICAO

PARS SPECIAL ENERGY ECONOMY ZONE/PERSIAN GULF

TRANSITION ALTITUDE
7000 FT

TWR 118.125
121.725
ATIS 126.600

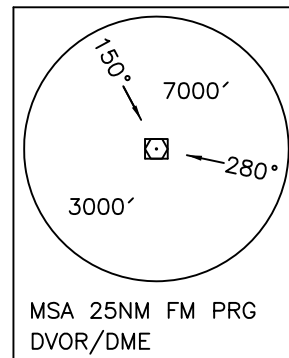
RWY 13/31
LAMERD 1Q/1R/1S

ALL DIRECTIONS ARE MAGNETIC,
LEVEL AND ELEVATIONS ARE IN FEET,
DISTANCES ARE IN NAUTICAL MILES.

ATZ class "D".

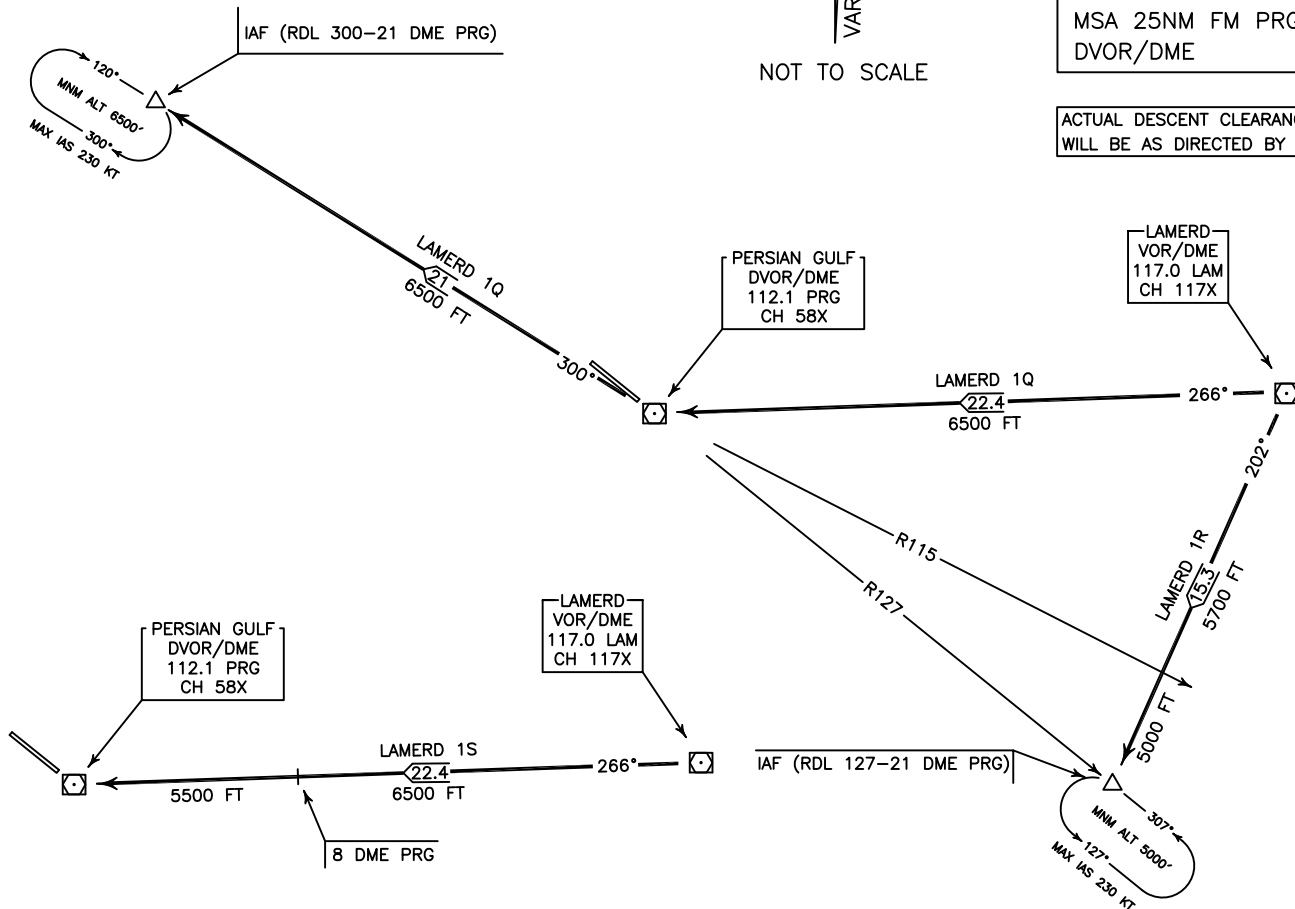


NOT TO SCALE



MSA 25NM FM PRG
DVOR/DME

ACTUAL DESCENT CLEARANCE
WILL BE AS DIRECTED BY ATC.



LAMERD 1Q ARR:

FM LAM VOR/DME proceed to IAF (RDL 300-21 DME PRG) via overhead PRG DVOR/DME, MAG TR 266°, DIST 22.4 NM, then MAG TR 300° to IAF, DIST 21 NM. MNM ALT 6500 FT.

LAMERD 1R ARR:

FM LAM VOR/DME proceed to IAF (RDL 127-21 DME PRG), MAG TR 202°, DIST 15.3 NM, MNM ALT 5700 FT, after crossing RDL 115 MNM ALT 5000 FT.

LAMERD 1S ARR:

FM LAM VOR/DME proceed to PRG DVOR/DME, MAG TR 266°, DIST 22.4 NM, MNM ALT 6500 FT up to 8 DME PRG, then 5500 FT.