

STANDARD ARRIVAL CHART-
INSTRUMENT (STAR)-ICAO

PARS SPECIAL ENERGY ECONOMY ZONE/PERSIAN GULF

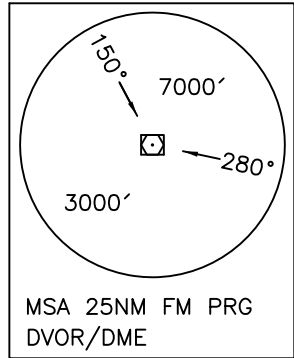
TRANSITION ALTITUDE
7000 FT

TWR 118.125
121.725
ATIS 126.600

RWY 13/31
KUPTO 1N/1Q

ALL DIRECTIONS ARE MAGNETIC,
LEVEL AND ELEVATIONS ARE IN FEET,
DISTANCES ARE IN NAUTICAL MILES.

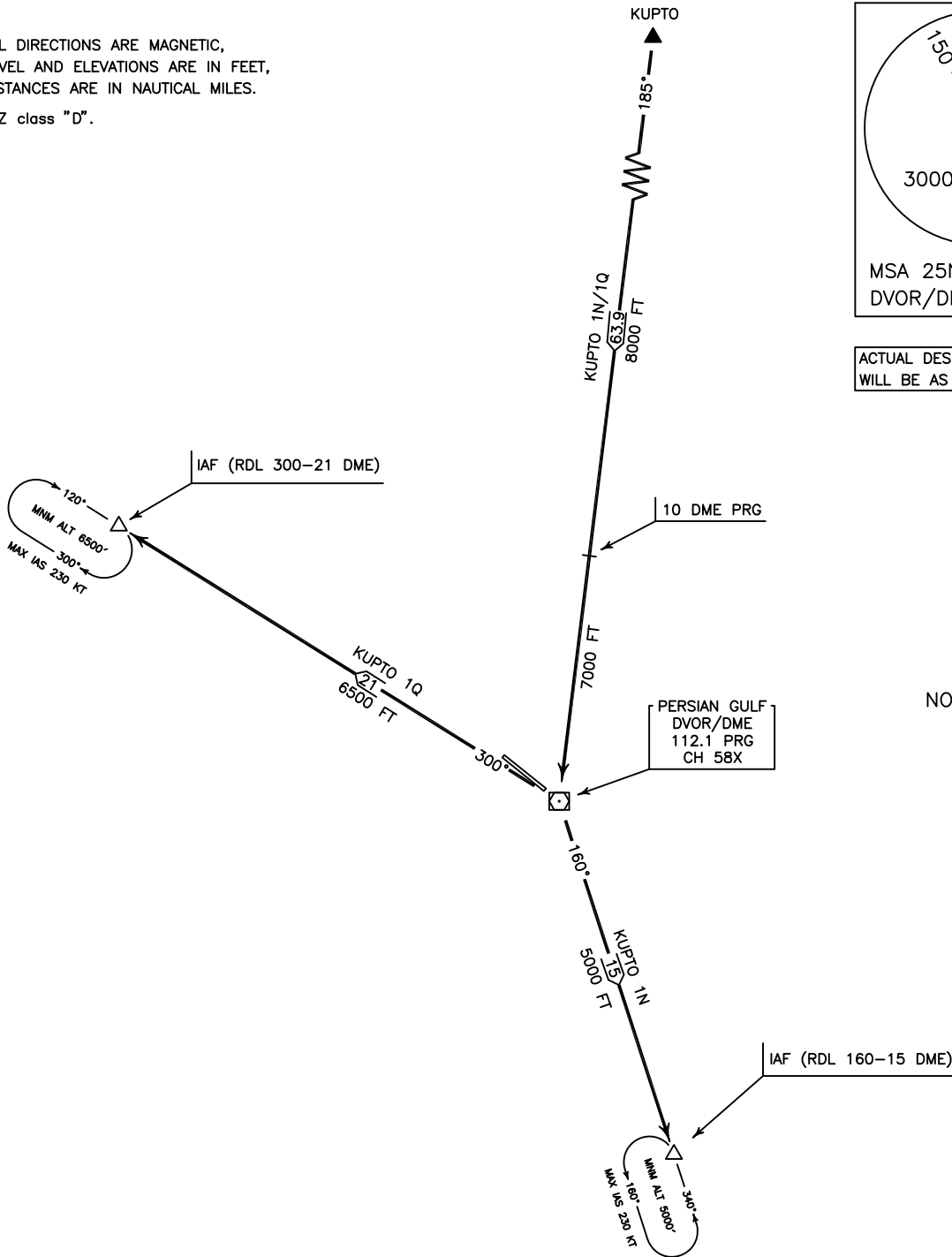
ATZ class "D".



ACTUAL DESCENT CLEARANCE
WILL BE AS DIRECTED BY ATC.



NOT TO SCALE



KUPTO 1N ARR:

FM KUPTO proceed to IAF (RDL 160-15 DME) via overhead PRG DVOR/DME, MAG TR 185°, DIST 63.9 NM, MNM level 8000 FT up to 10 DME then MNM level 7000 FT, then proceed MAG TR 160° to IAF, DIST 15 NM. MNM ALT 5000 FT.

KUPTO 1Q ARR:

FM KUPTO proceed to IAF (RDL 300-21 DME) via overhead PRG DVOR/DME, MAG TR 185°, DIST 63.9 NM, MNM level 8000 FT up to 10 DME then MNM level 7000 FT, then proceed on MAG TR 300° to IAF, DIST 21 NM. MNM ALT 6500 FT.