

STANDARD ARRIVAL CHART-
INSTRUMENT (STAR)-ICAO

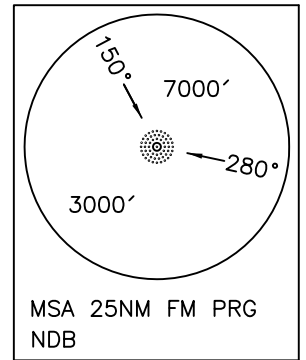
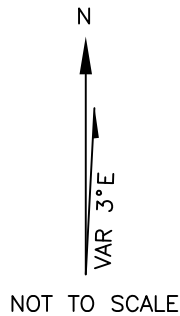
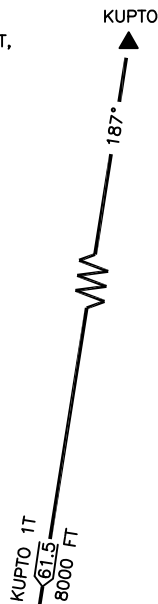
PARS SPECIAL ENERGY ECONOMY ZONE/PERSIAN GULF

TRANSITION ALTITUDE
7000 FT

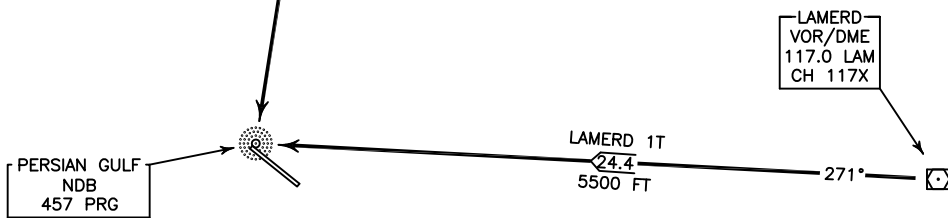
TWR 118.125
121.725
ATIS 126.600

RWY 13/31
KUPTO 1T/LAMERD 1T

ALL DIRECTIONS ARE MAGNETIC,
LEVEL AND ELEVATIONS ARE IN FEET,
DISTANCES ARE IN NAUTICAL MILES.
ATZ class "D".



ACTUAL DESCENT CLEARANCE
WILL BE AS DIRECTED BY ATC.



KUPTO 1T ARR:

FM KUPTO proceed to PRG NDB, MAG TR 187°, DIST 61.5 NM. MNM level 8000 FT.

LAMERD 1T ARR:

FM LAM VOR/DME proceed to overhead PRG NDB, MAG TR 271°, DIST 24.4 NM. MNM ALT 5500 FT.