

STANDARD DEPARTURE CHART-
INSTRUMENT (SID)-ICAO

TRANSITION ALTITUDE
5000 FT

INFO 122.100
121.650

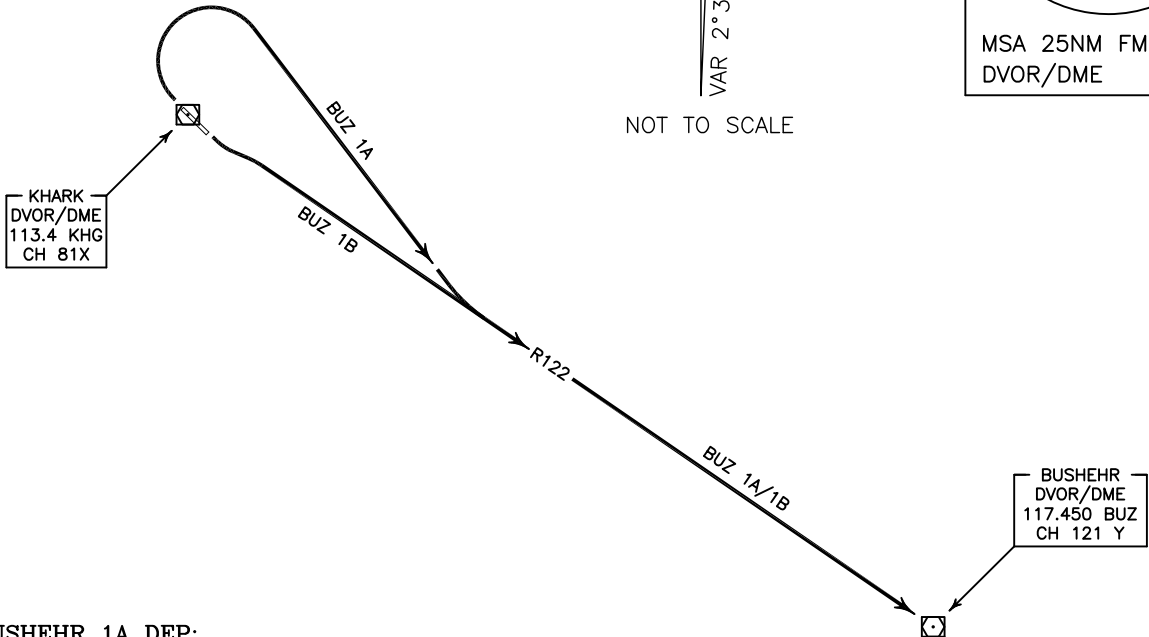
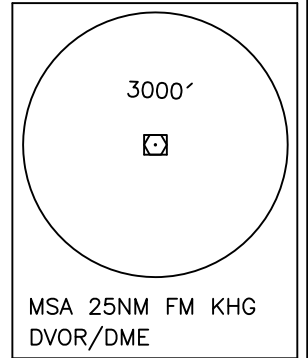
KHARK ISLAND/KHARK
RWY 13/31
BUZ 1A/1B
IBKUG 1A/1B

ALL DIRECTIONS ARE MAGNETIC.
LEVEL AND ELEVATIONS ARE IN FEET.
DISTANCES ARE IN NAUTICAL MILES.

ATZ class "G".



NOT TO SCALE

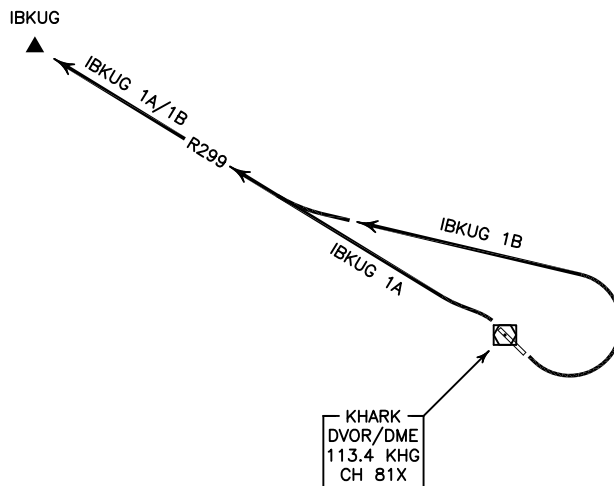


BUSHEHR 1A DEP:

DEP RWY 31 - After take off turn right to intercept RDL 122 FM KHG DVOR/DME to BUZ DVOR/DME and climb to cleared level.

BUSHEHR 1B DEP:

DEP RWY 13 - After take off turn left to intercept RDL 122 FM KHG DVOR/DME to BUZ DVOR/DME and climb to cleared level.



IBKUG 1A DEP:

DEP RWY 31 - After take off turn left to intercept RDL 299 FM KHG DVOR/DME to IBKUG and climb to cleared level.

IBKUG 1B DEP:

DEP RWY 13 - After take off turn left to intercept RDL 299 FM KHG DVOR/DME to IBKUG and climb to cleared level.