

STANDARD DEPARTURE CHART-
INSTRUMENT (SID)-ICAO

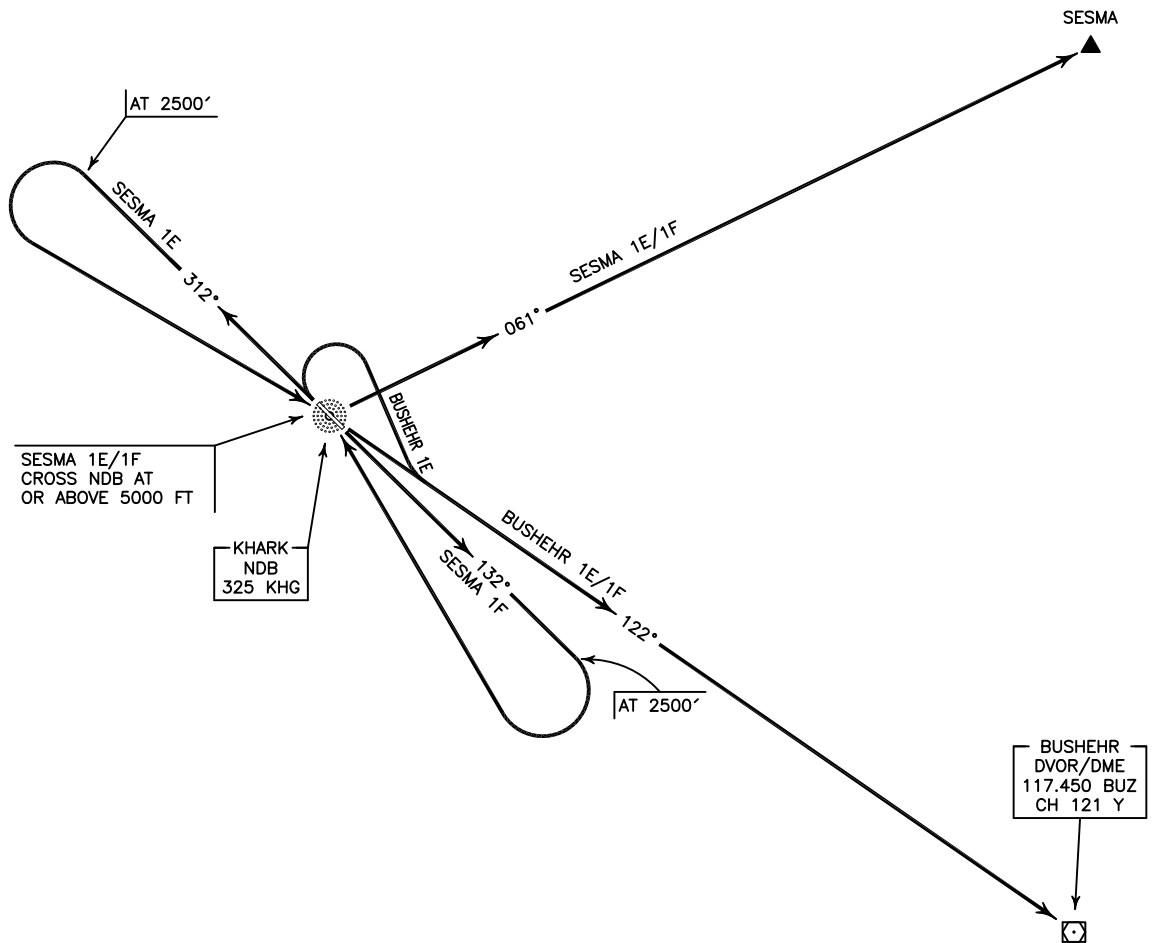
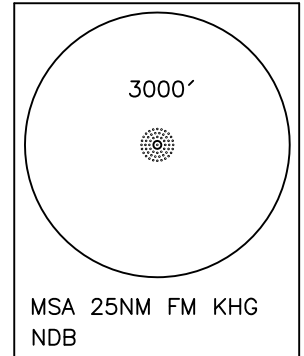
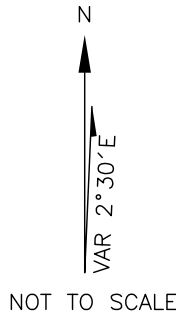
TRANSITION ALTITUDE
5000 FT

INFO 122.100
121.650

KHARK ISLAND/KHARK
RWY 13/31
SESMA 1E/1F
BUSHEHR 1E/1F

ALL DIRECTIONS ARE MAGNETIC.
LEVEL AND ELEVATIONS ARE IN FEET.
DISTANCES ARE IN NAUTICAL MILES.

ATZ class "G".



SESMA 1E DEP:

DEP RWY 31 - After take off climb on BRG 312° MAG to 2500 FT, then turn left to cross overhead NDB at or above 5000 FT, then intercept BRG 061° MAG to SESMA and climb to cleared level.

NOTE: SESMA 1E DEP crossing OIC17.

SESMA 1F DEP:

DEP RWY 13 - After take off climb on BRG 132° to 2500 FT, then turn right to cross overhead NDB at or above 5000 FT, then intercept BRG 061° to SESMA and climb to cleared level.

NOTE: SESMA 1F DEP crossing OIC17.

BUSHEHR 1E DEP:

DEP RWY 31 - After take off turn right to intercept BRG 122° MAG to BUZ DVOR/DME and climb to cleared level.

BUSHEHR 1F DEP:

DEP RWY 13 - After take off turn left to intercept BRG 122° MAG to BUZ DVOR/DME and climb to cleared level.