

STANDARD ARRIVAL CHART-
INSTRUMENT (STAR)-ICAO

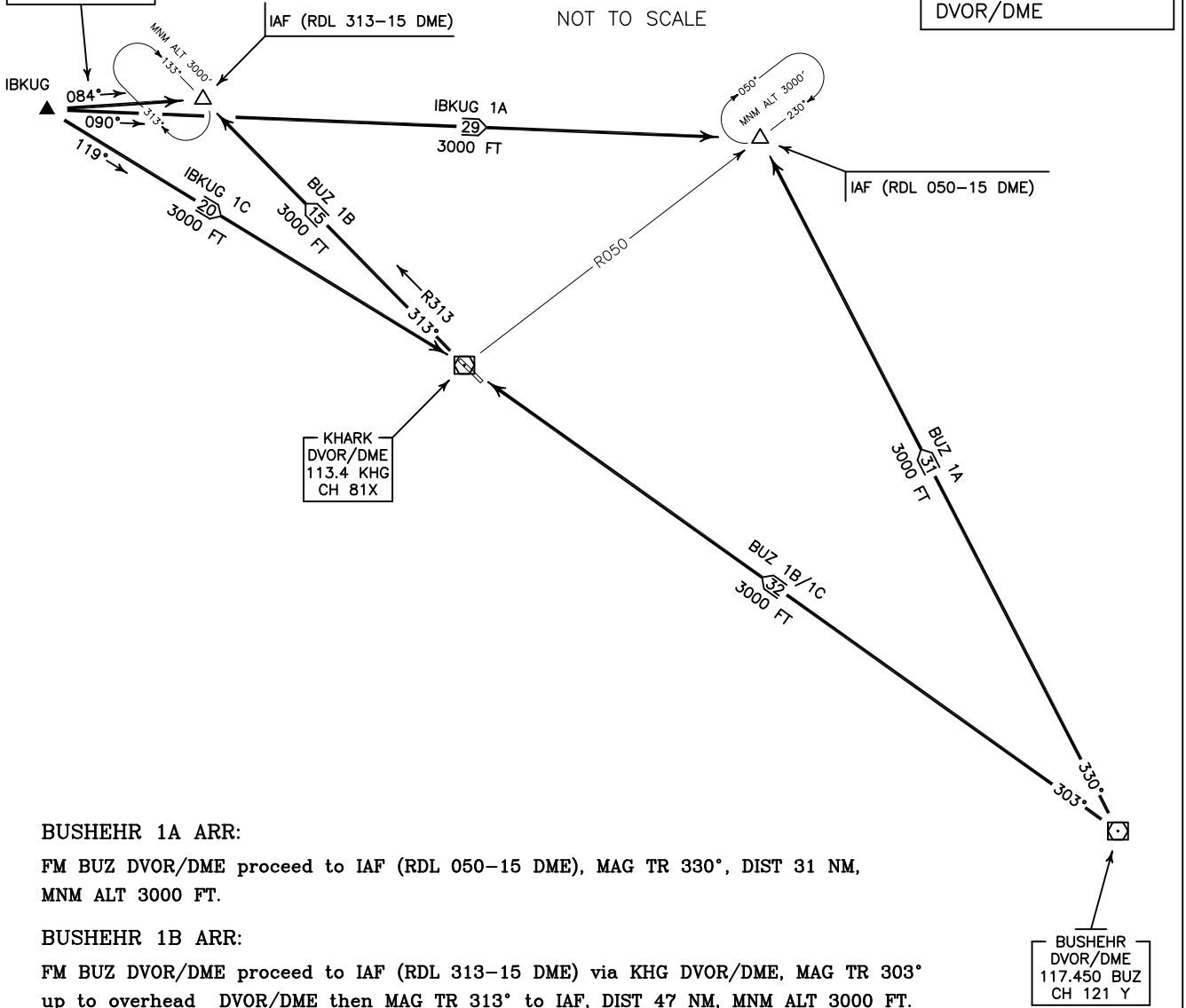
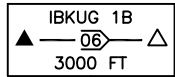
TRANSITION ALTITUDE
5000 FT

INFO 122.100
121.650

KHARK ISLAND/KHARK
RWY 13/31
BUZ 1A/1B/1C
IBKUG 1A/1B/1C

ALL DIRECTIONS ARE MAGNETIC.
LEVEL AND ELEVATIONS ARE IN FEET.
DISTANCES ARE IN NAUTICAL MILES.

ATZ class "G".



BUSHEHR 1A ARR:

FM BUZ DVOR/DME proceed to IAF (RDL 050-15 DME), MAG TR 330°, DIST 31 NM, MNM ALT 3000 FT.

BUSHEHR 1B ARR:

FM BUZ DVOR/DME proceed to IAF (RDL 313-15 DME) via KHG DVOR/DME, MAG TR 303° up to overhead DVOR/DME then MAG TR 313° to IAF, DIST 47 NM, MNM ALT 3000 FT.

BUSHEHR 1C ARR:

FM BUZ DVOR/DME proceed to KHG DVOR/DME, MAG TR 303°, DIST 32 NM, MNM ALT 3000 FT.

IBKUG 1A ARR:

FM IBKUG proceed to IAF (RDL 050-15 DME), MAG TR 090°, DIST 29 NM, MNM ALT 3000 FT.

IBKUG 1B ARR:

FM IBKUG proceed to IAF (RDL 313-15 DME), MAG TR 084°, DIST 6 NM, MNM ALT 3000 FT.

IBKUG 1C ARR:

FM IBKUG proceed to KHG DVOR/DME, MAG TR 119°, DIST 20 NM, MNM ALT 3000 FT.