

STANDARD DEPARTURE CHART-
INSTRUMENT (SID)-ICAO

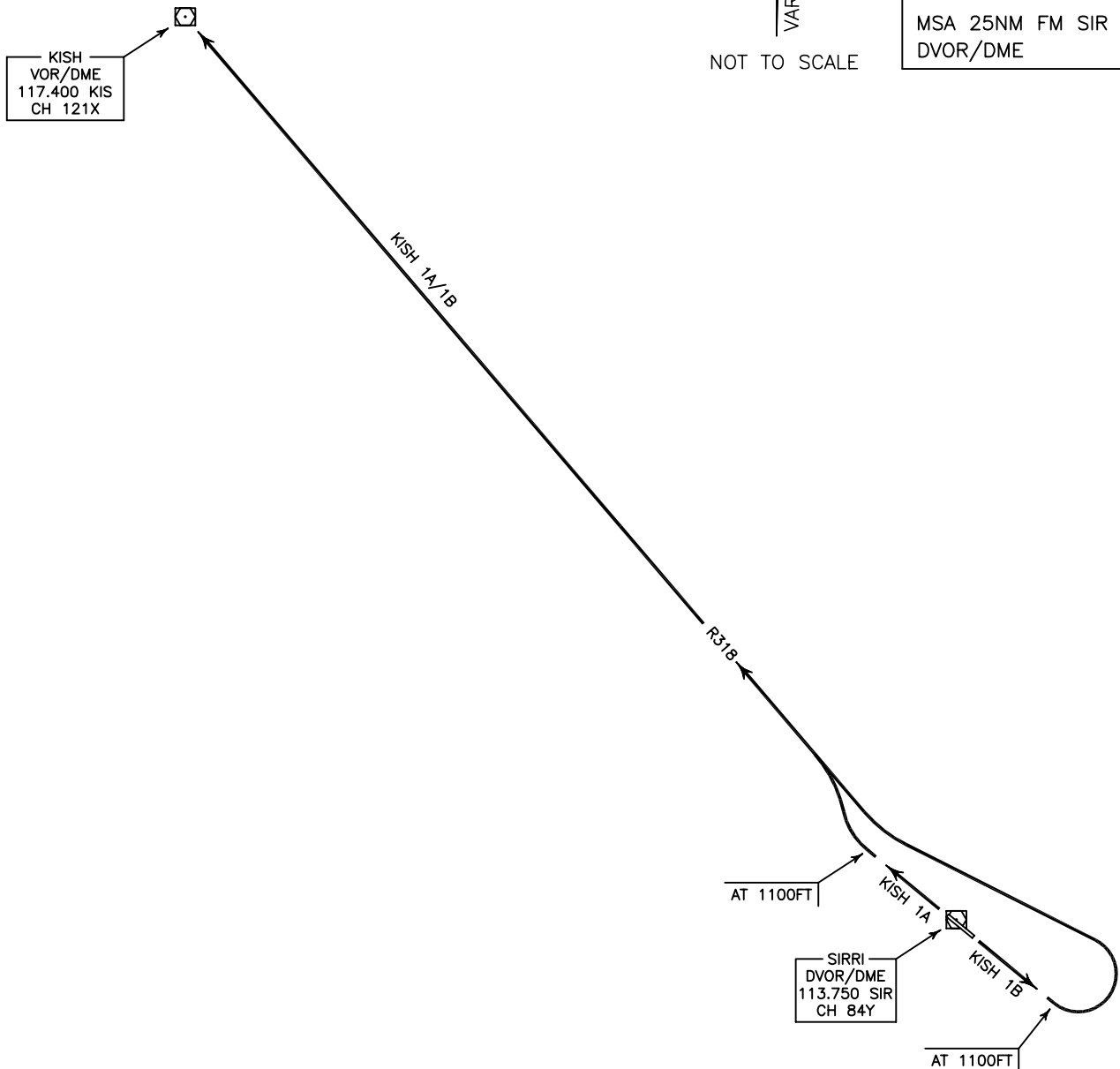
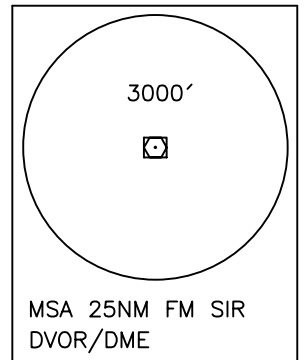
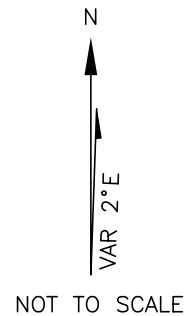
TRANSITION ALTITUDE 3000 FT
TRANSITION LEVEL FL 50

INFO 135.025

SIRRI ISLAND/SIRRI
RWY 30/12
KISH 1A/1B

ALL DIRECTIONS ARE MAGNETIC,
LEVEL AND ELEVATIONS ARE IN FEET,
DISTANCES ARE IN NAUTICAL MILES.

ATZ class "G".



KISH 1A DEP:

DEP RWY 30 - After take off climb on RWY heading to 1100 FT, then turn right climb on RDL 318 FM SIR DVOR/DME to KIS VOR/DME and climb to cleared level.

KISH 1B DEP:

DEP RWY 12 - After take off climb on RWY heading to 1100 FT, then turn left climb on RDL 318 FM SIR DVOR/DME to KIS VOR/DME and climb to cleared level.