

STANDARD ARRIVAL CHART-
INSTRUMENT (STAR)-ICAO

TRANSITION ALTITUDE 3000 FT
TRANSITION LEVEL FL 50

INFO 135.025

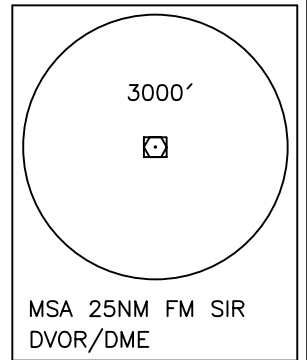
SIRRI ISLAND/SIRRI
RWY 30/12
KISH 1R/1S

ALL DIRECTIONS ARE MAGNETIC,
LEVEL AND ELEVATIONS ARE IN FEET,
DISTANCES ARE IN NAUTICAL MILES.

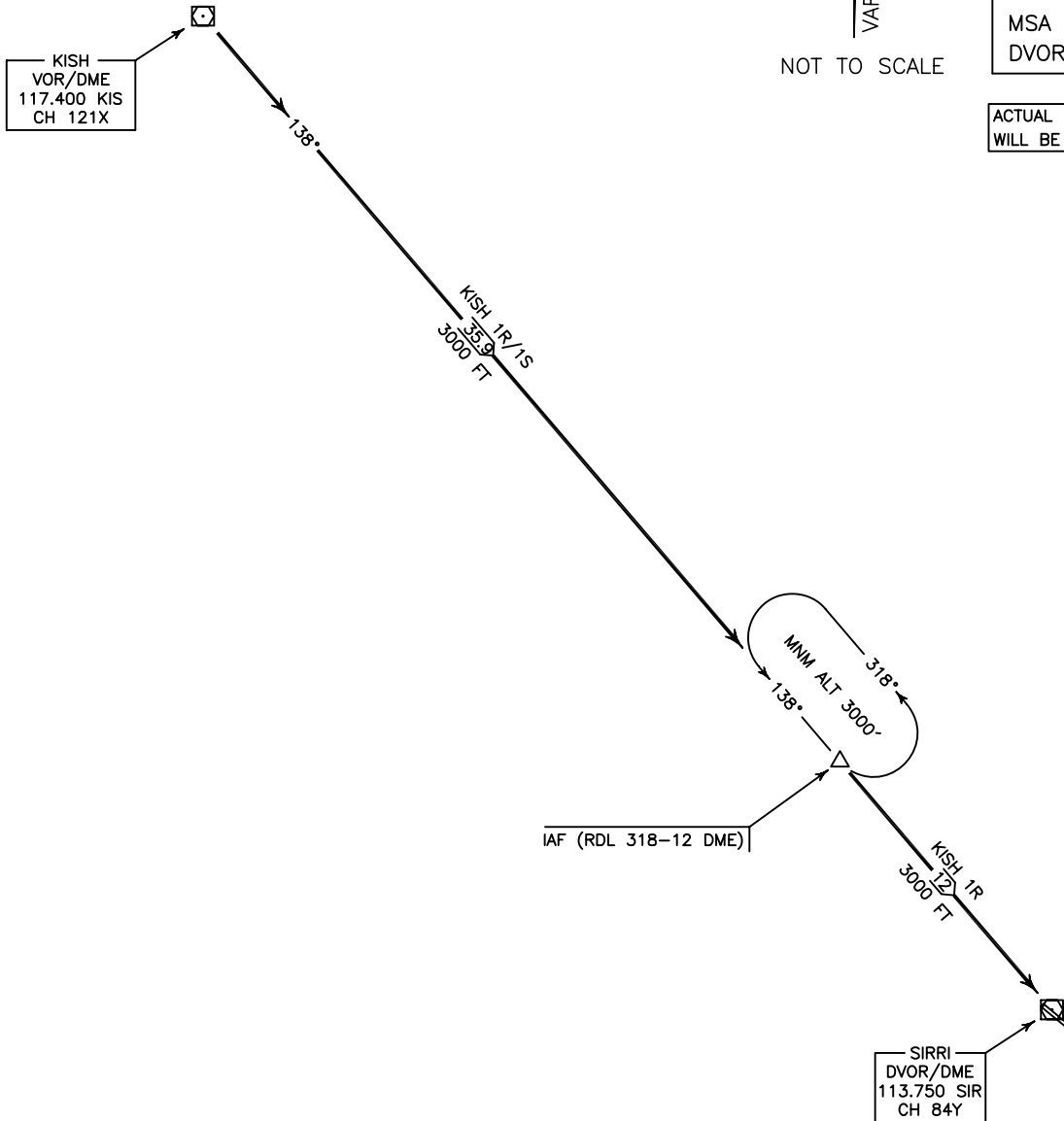
ATZ class "G".



NOT TO SCALE



ACTUAL DESCENT CLEARANCE
WILL BE AS DIRECTED BY ATC.



KISH 1R ARR:

FM KIS VOR/DME proceed to overhead SIR DVOR/DME, MAG TR 138°, DIST 47.9 NM, MNM ALT 3000 FT.

KISH 1S ARR:

FM KIS VOR/DME proceed to IAF (RDL 318-12 DME), MAG TR 138°, DIST 35.9 NM, MNM ALT 3000 FT.