

STANDARD DEPARTURE CHART-
INSTRUMENT (SID)-ICAO

TRANSITION ALTITUDE 6000 FT
TRANSITION LEVEL FL 80

INFO 122.100

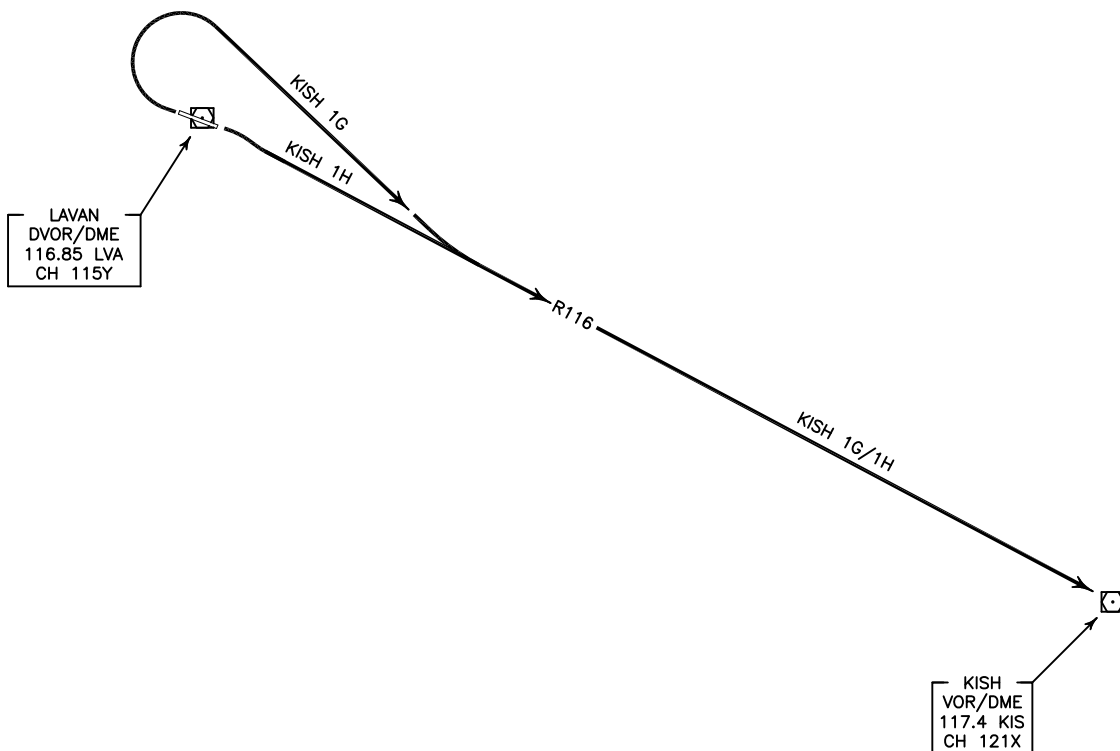
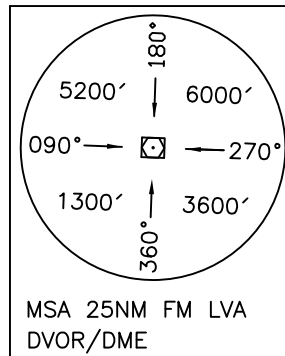
LAVAN ISLAND/LAVAN
RWY 11/29
KISH 1G/1H

ALL DIRECTIONS ARE MAGNETIC,
LEVEL AND ELEVATIONS ARE IN FEET,
DISTANCES ARE IN NAUTICAL MILES.

ATZ class "G".



NOT TO SCALE



KISH 1G DEP:

DEP RWY 29 - After take off turn right to intercept RDL 116 to KIS VOR/DME and climb to cleared level.

KISH 1H DEP:

DEP RWY 11 - After take off turn right to intercept RDL 116 to KIS VOR/DME and climb to cleared level.