

STANDARD DEPARTURE CHART—  
INSTRUMENT (SID)—ICAO

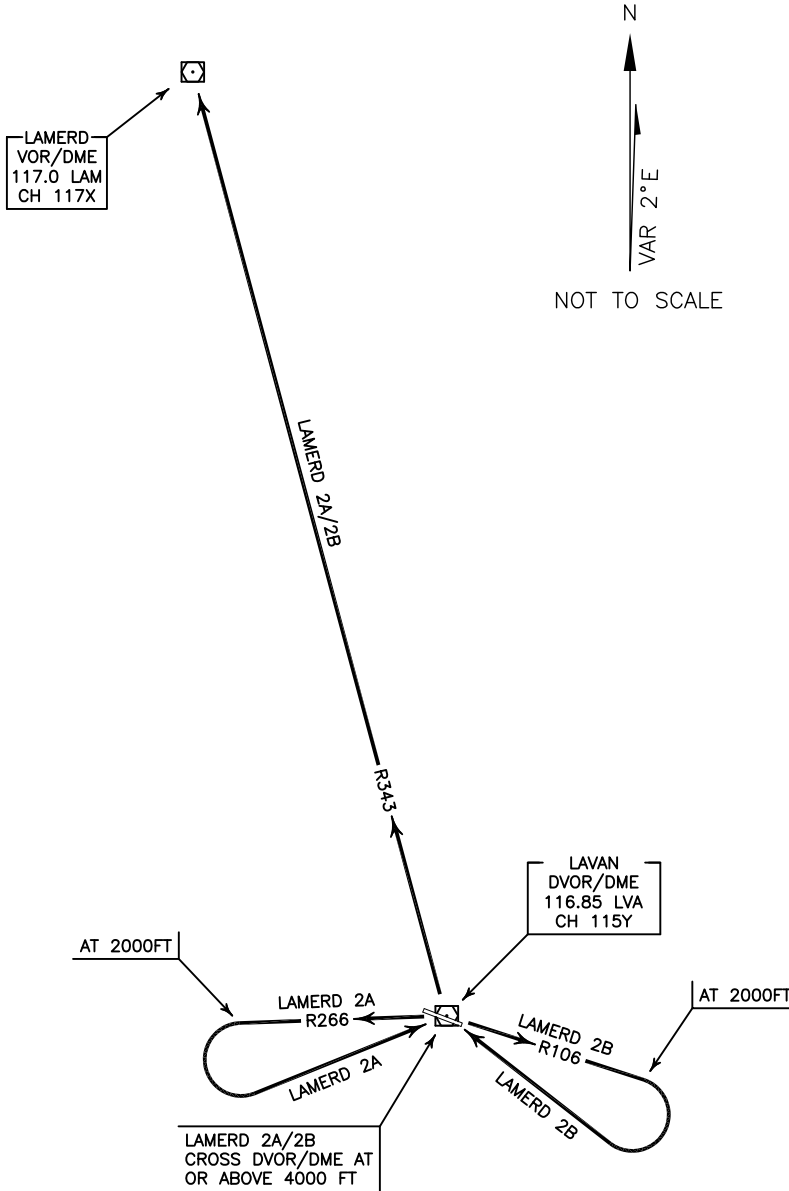
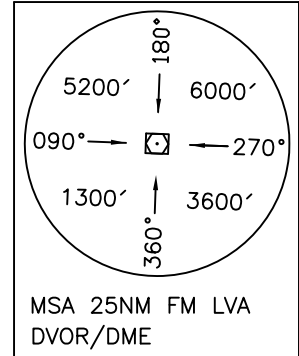
TRANSITION ALTITUDE 6000 FT
TRANSITION LEVEL FL 80

INFO 122.100

LAVAN ISLAND/LAVAN  
RWY 11/29  
LAMERD 2A/2B

ALL DIRECTIONS ARE MAGNETIC,  
LEVEL AND ELEVATIONS ARE IN FEET,  
DISTANCES ARE IN NAUTICAL MILES.

ATZ class "G".



**LAMERD 2A DEP:**

DEP RWY 29 – After take off climb on RDL 266 TO 2000 FT, then turn left to cross overhead DVOR/DME at or above 4000 FT, then intercept RDL 343 to LAM VOR/DME and climb to cleared level. MNM rate of climb 260 FT/NM.

**LAMERD 2B DEP:**

DEP RWY 11 – After take off climb on RDL 106 TO 2000 FT, then turn right to cross overhead DVOR/DME at or above 4000 FT, then intercept RDL 343 to LAM VOR/DME and climb to cleared level. MNM rate of climb 260 FT/NM.