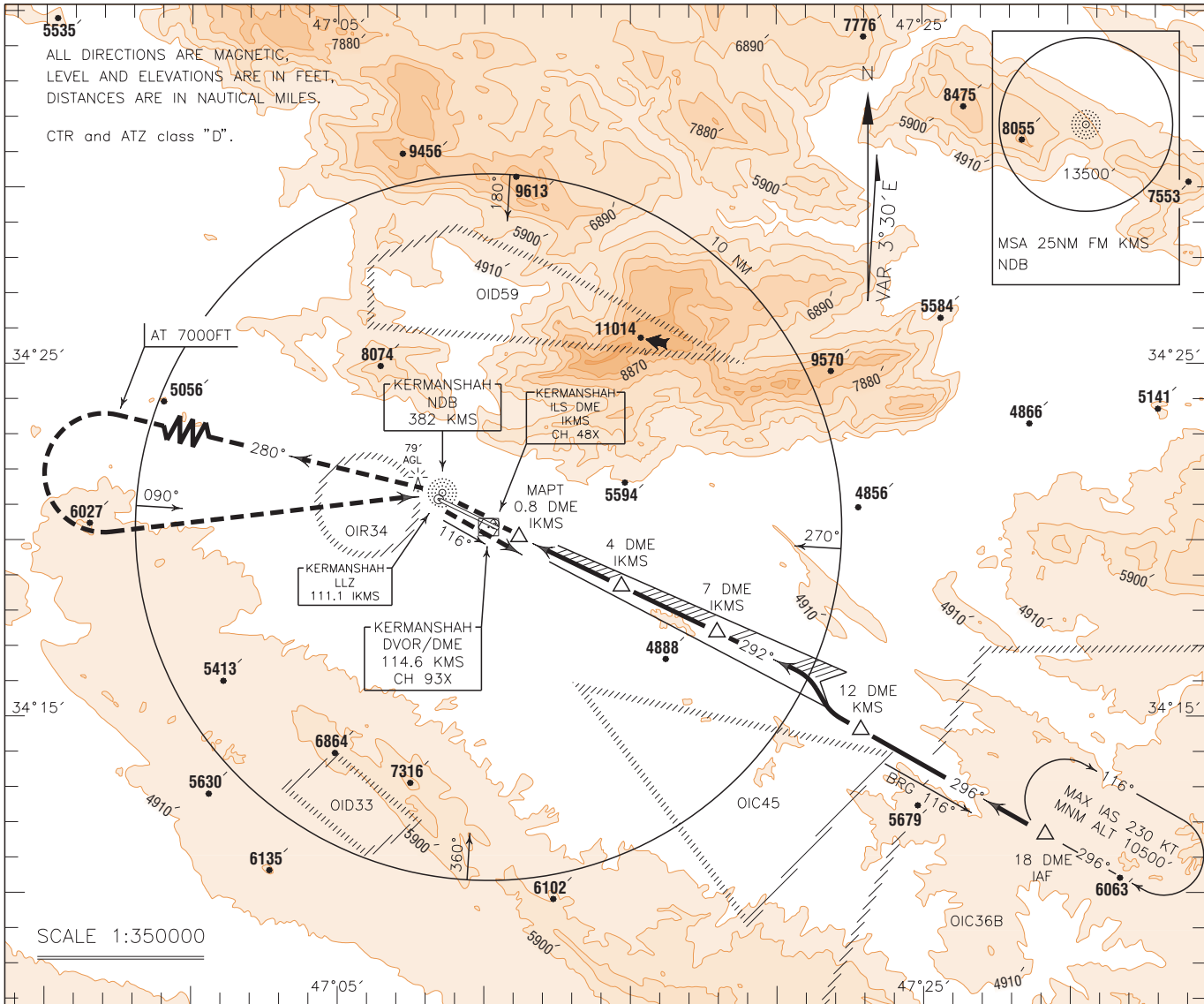


INSTRUMENT
APPROACH
CHART-ICAO

AERODROME ELEV. 4301 FT
HEIGHTS RELATED TO
AERODROME ELEVATION

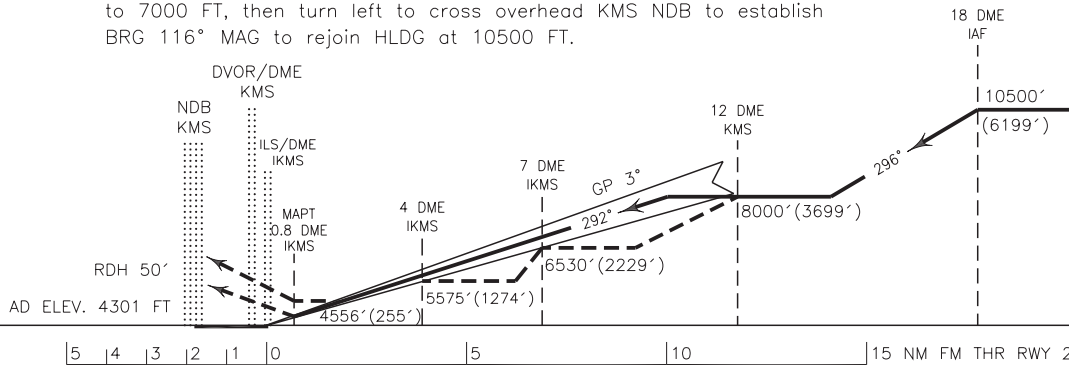
TWR	122.450
	121.900
ATIS	126.800

KERMANSHAH/
SHAHID ASHRAFI ESFAHANI
NDB/DME ILS RWY 29
CAT A/B/C/D



MISSED APPROACH: At 0.8 DME (IKMS) climb to overhead KMS NDB, then climb on BRG 280° MAG to 7000 FT, then turn left to cross overhead KMS NDB to establish BRG 116° MAG to rejoin HLDG at 10500 FT.

TA 13000'



NOTE:

- 1-Circle to land not authorized BTN BRG 315° and BRG 100° clockwise.
- 2-Contour intervals are to be selected at 990 FT (300 M).

OCA(H)	A	B	C	D
Straight		4556' (255')		
GP INOP		5000' (699')		
Circling	5100' (799')	5200' (899')	5400' (1099')	5580' (1279')