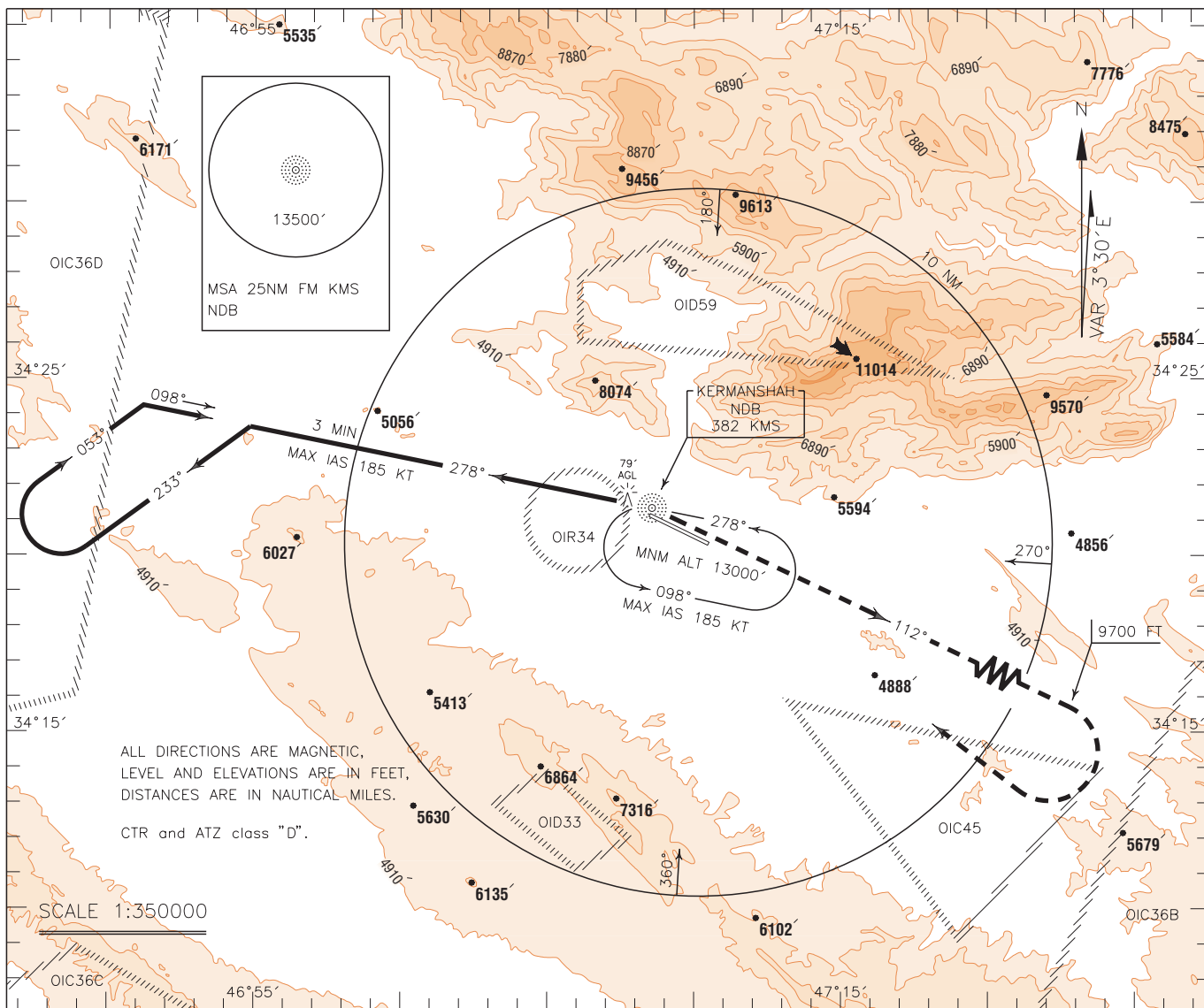


INSTRUMENT
APPROACH
CHART-ICAO

AERODROME ELEV. 4301 FT
HEIGHTS RELATED TO
AERODROME ELEVATION

TWR 122.450
121.900
ATIS 126.800

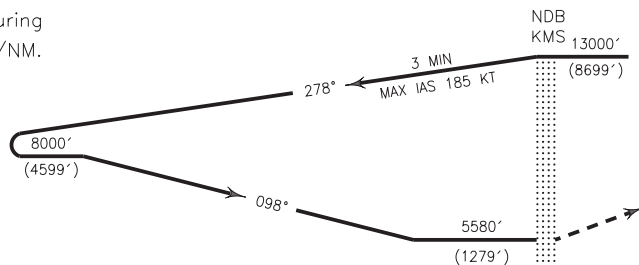
KERMANSHAH/
SHAHID ASHRAFI ESFAHANI
CIRCLING NDB
CAT C/D



MISSED APPROACH: Over NDB climb on BRG 112° MAG to 9700 FT, then turn right to rejoin
HLDG at 13000 FT.

TA 13000'

NOTE:
MNM rate of climb during
missed APCH 220 FT/NM.



15 | 10 | 5 | 0 | 1 | 2 | 3 | 4 | 5 NM FM THR RWY 11

NOTE:
1-Circle to land not authorized BTN BRG
315° and BRG 100° clockwise.
2-Contour intervals are to be selected at
990 FT (300 M).

OCA(H)	A	B	C	D
Straight				
Circling			5580' (1279')	