

STANDARD DEPARTURE CHART-
INSTRUMENT (SID)-ICAO

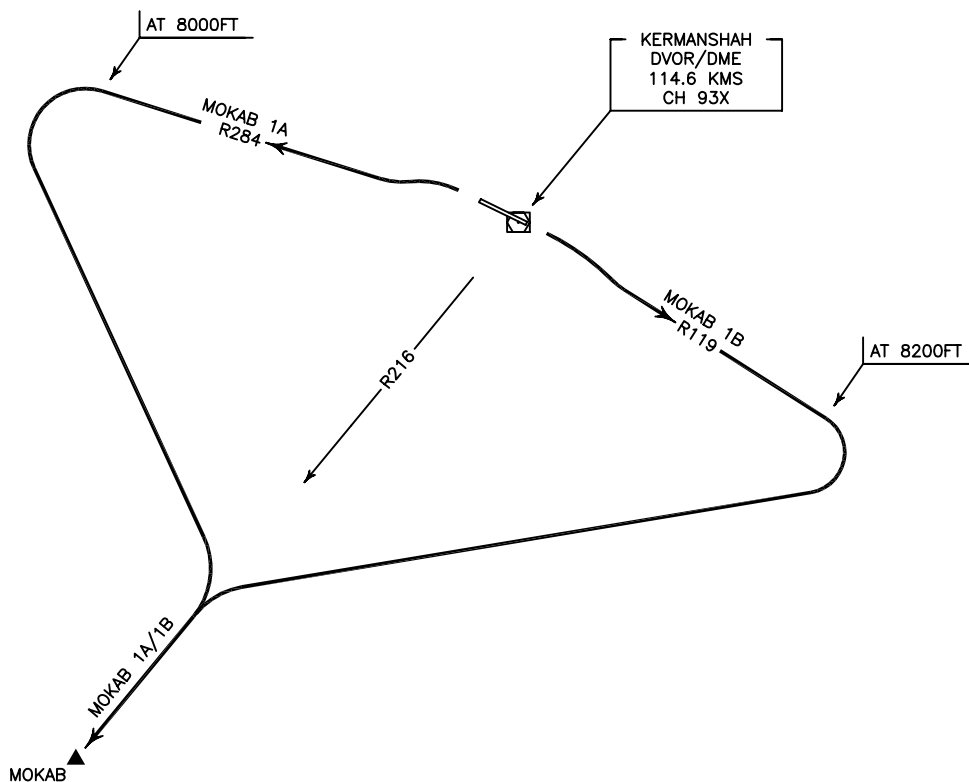
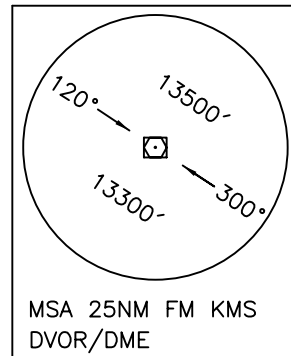
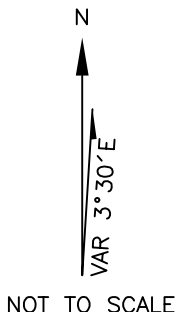
TRANSITION ALTITUDE
13000 FT

TWR 122.450
121.900
ATIS 126.800

KERMANSHAH/
SHAHID ASHRAFI ESFAHANI
RWY 11/29
MOKAB 1A/1B

ALL DIRECTIONS ARE MAGNETIC.
LEVEL AND ELEVATIONS ARE IN FEET.
DISTANCES ARE IN NAUTICAL MILES.

CTR and ATZ class "D".



MOKAB 1A DEP:

DEP RWY 29 - After take off turn left climb on RDL 284 to 8000 FT, then turn left to intercept RDL 216 to MOKAB and climb to cleared level.
MNM rate of climb 250 FT/NM.

MOKAB 1B DEP:

DEP RWY 11 - After take off turn right climb on RDL 119 to 8200 FT, then turn right to intercept RDL 216 to MOKAB and climb to cleared level.
MNM rate of climb 305 FT/NM up to 8200 FT.