

STANDARD DEPARTURE CHART-
INSTRUMENT (SID)-ICAO

TRANSITION ALTITUDE
13000 FT

TWR 122.450
121.900
ATIS 126.800

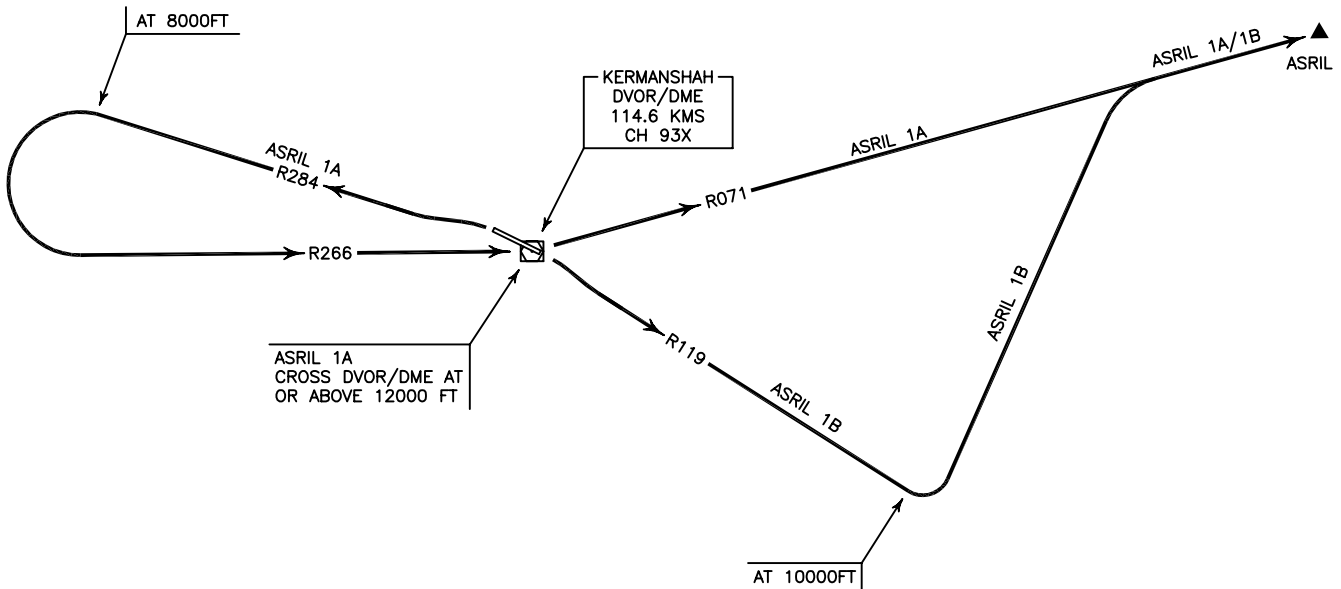
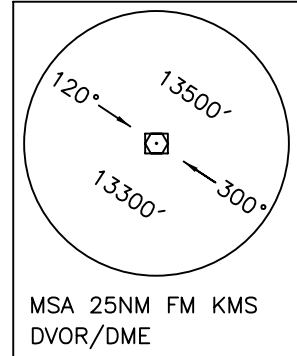
KERMANSHAH/
SHAHID ASHRAFI ESFAHANI
RWY 11/29
ASRIL 1A/1B

ALL DIRECTIONS ARE MAGNETIC.
LEVEL AND ELEVATIONS ARE IN FEET.
DISTANCES ARE IN NAUTICAL MILES.

CTR and ATZ class "D".



NOT TO SCALE



ASRIL 1A DEP:

DEP RWY 29 - After take off turn left climb on RDL 284 to 8000 FT, then turn left intercept RDL 266 to cross overhead DVOR/DME at or above 12000 FT, then continue on RDL 071 to ASRIL and climb to cleared level.

ASRIL 1B DEP:

DEP RWY 11 - After take off turn right climb on RDL 119 to 10000 FT, then turn left intercept RDL 071 to ASRIL and climb to cleared level. MNM rate of climb 300 FT/NM.