

STANDARD DEPARTURE CHART-
INSTRUMENT (SID)-ICAO

TRANSITION ALTITUDE
13000 FT

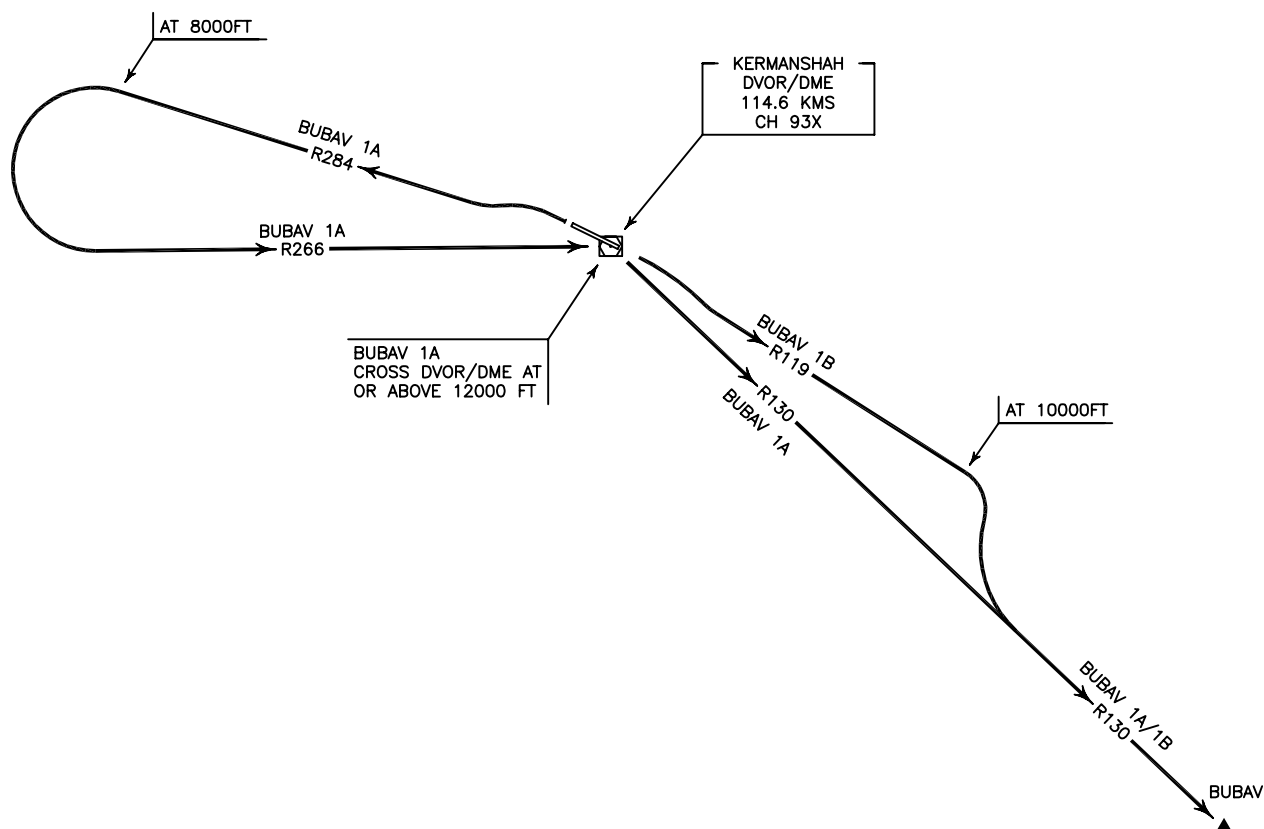
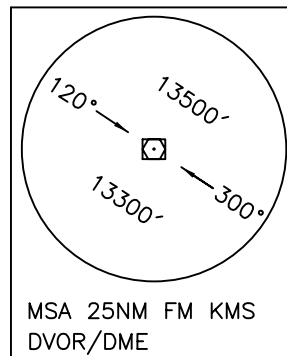
TWR 122.450
121.900
ATIS 126.800

KERMANSHAH/
SHAHID ASHRAFI ESFAHANI
RWY 11/29
BUBAV 1A/1B

ALL DIRECTIONS ARE MAGNETIC.
LEVEL AND ELEVATIONS ARE IN FEET.
DISTANCES ARE IN NAUTICAL MILES.

CTR and ATZ class "D".

N
VAR 3°30'E
NOT TO SCALE



BUBAV 1A DEP:

DEP RWY 29 - After take off turn left climb on RDL 284 to 8000 FT, then turn left to intercept RDL 266 to cross overhead at or above 12000 FT, then turn right to intercept RDL 130 to BUBAV and climb to cleared level.

BUBAV 1B DEP:

DEP RWY 11 - After take off turn right climb on RDL 119 to 10000 FT, then turn right to intercept RDL 130 to BUBAV and climb to cleared level.
MNM rate of climb 380 FT/NM.