

STANDARD DEPARTURE CHART-
INSTRUMENT (SID)-ICAO

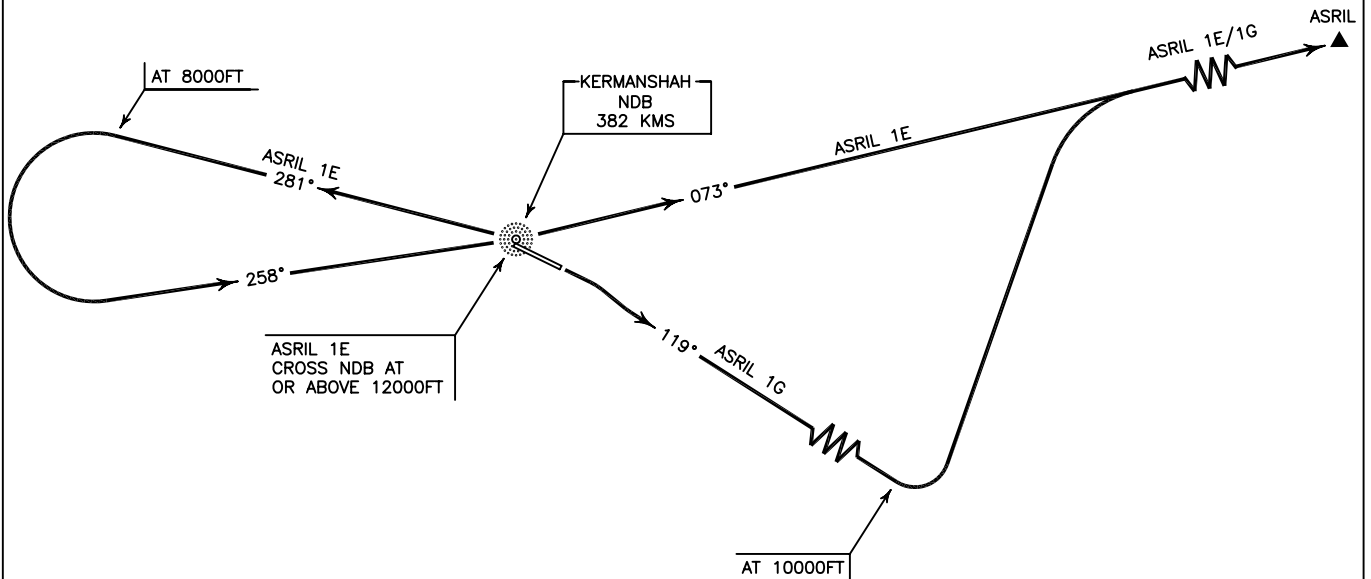
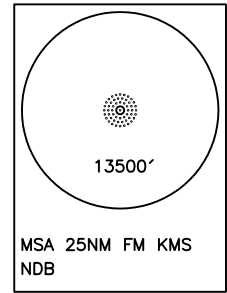
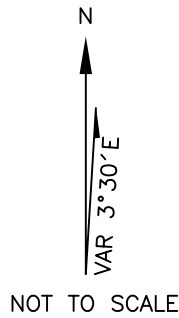
TRANSITION ALTITUDE
13000 FT

TWR 122.450
121.900
ATIS 126.800

KERMANSHAH/
SHAHID ASHRAFI ESFAHANI
RWY 11/29
ASRIL 1E/1G

ALL DIRECTIONS ARE MAGNETIC.
LEVEL AND ELEVATIONS ARE IN FEET.
DISTANCES ARE IN NAUTICAL MILES.

CTR and ATZ class "D".



ASRIL 1E DEP:

DEP RWY 29 - After take off turn left climb on BRG 281° MAG to 8000 FT, then turn left to intercept BRG 258° MAG to cross overhead KMS NDB at or above 12000 FT, then climb on BRG 073° MAG to ASRIL and climb to cleared level.

ASRIL 1G DEP:

DEP RWY 11 - After take off turn right climb on BRG 119° MAG to 10000 FT, then turn left to intercept BRG 073° MAG to ASRIL and climb to cleared level.
MNM rate of climb 300 FT/NM.